

NOTIFICATION OF POTENTIAL HAZARD

ASBESTOS CONTAINING MATERIAL (ACM) IS PRESENT IN THE BUILDING THAT MAY IMPACT THE WORK OF ALL TRADES. THE CONTRACTOR SHALL REQUIRE THEIR PERSONNEL AND ALL SUBCONTRACTOR PERSONNEL TO COORDINATE WITH OTHER TRADES AND CONDUCT THEIR WORK TO PREVENT WORKER EXPOSURE OR SITE CONTAMINATION. REFER TO DIVISION 01 AND 02 SPECIFICATIONS FOR SPECIFIC INFORMATION CONCERNING REMOVING AND DISPOSING OF THESE MATERIALS AND THE INSTALLATION OF NEW MATERIALS AND COMPONENTS. THIS NOTIFICATION IS PROVIDED IN ACCORDANCE WITH EPA AND OSHA REQUIREMENTS.

SHEET NOTES

- 1 DISCONNECT LIGHT FIXTURE AND DEMOLISH ASSOCIATED CONDUIT AND CONDUCTORS BACK TO PROTECTIVE DEVICE OR LAST DEVICE EXISTING TO REMAIN AND MAKE SAFE. TURN OVER LIGHT FIXTURE TO OWNER. RESERVE CIRCUIT FOR CONNECTION TO NEW FIXTURES.
- 2 DEMOLISH EXISTING WIRING DEVICE, INCLUDING CONDUIT AND CONDUCTORS BACK TO PROTECTIVE DEVICE OR LAST DEVICE EXISTING TO REMAIN AND MAKE SAFE.
- 3 DEMOLISH EXISTING TELECOM DEVICE INCLUDING CONDUIT AND CABLING BACK TO PATCH PANEL.
- 4 DISCONNECT, REMOVE AND RESERVE LIGHT FIXTURE FOR RELOCATION.



www.amc-engineers.com
Adams, Morgenthau & Co., Inc.
CMA No. 03442 - 907.257.9100
701 E. Tudor Rd., Suite 250
Anchorage, AK 99503



NSB EM-2 MECHANICAL SYSTEMS
CONVERSION/UPGRADE

Revisions

| No. | Date | Description |
|-----|------|-------------|
| | | |
| | | |
| | | |
| | | |
| | | |

Design: JEH

Drawn: MPL

UAA Project No.: 16-0103

Date: 02/17/2017

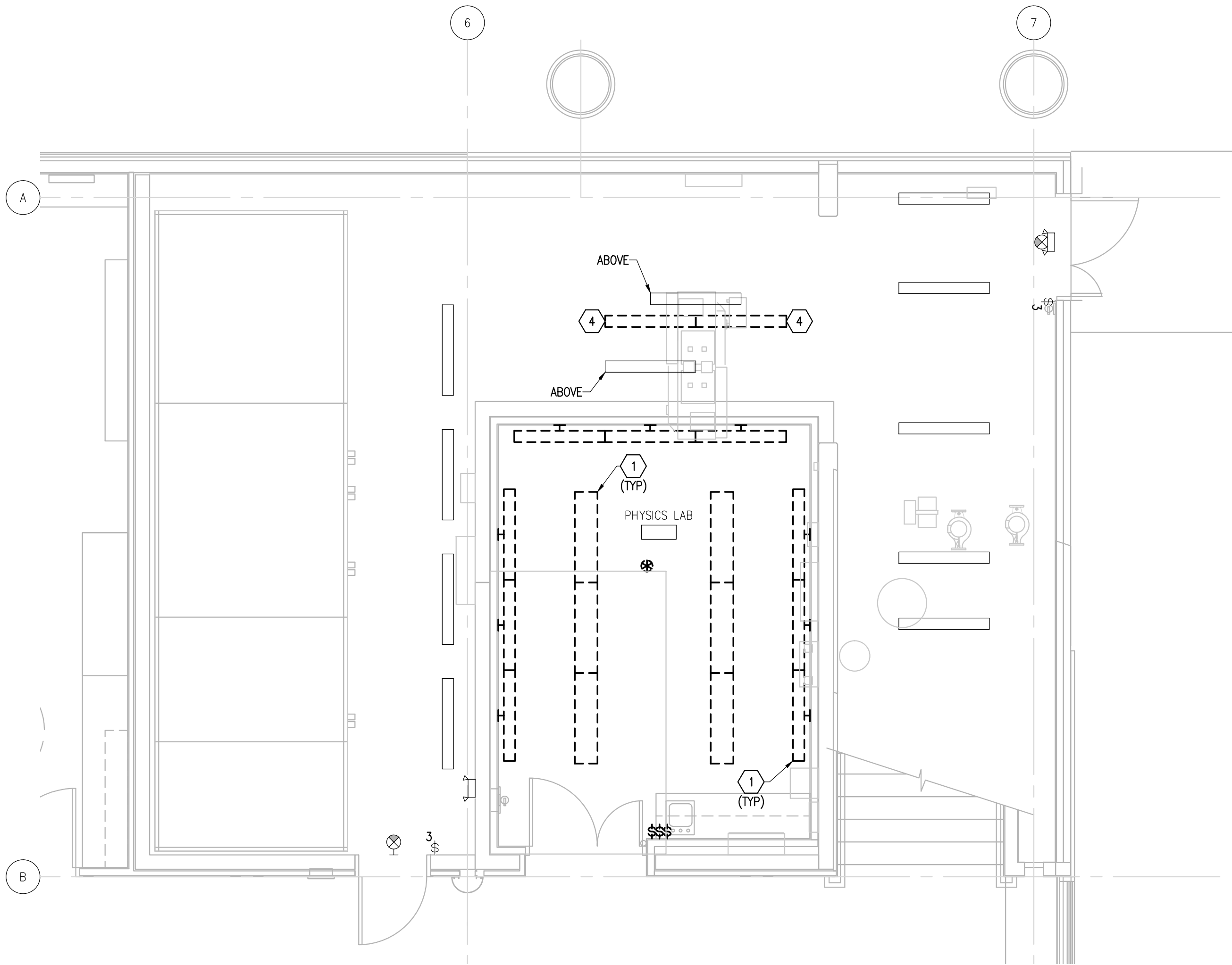
Sheet Title

ENLARGED PLANS ☐
DEMO

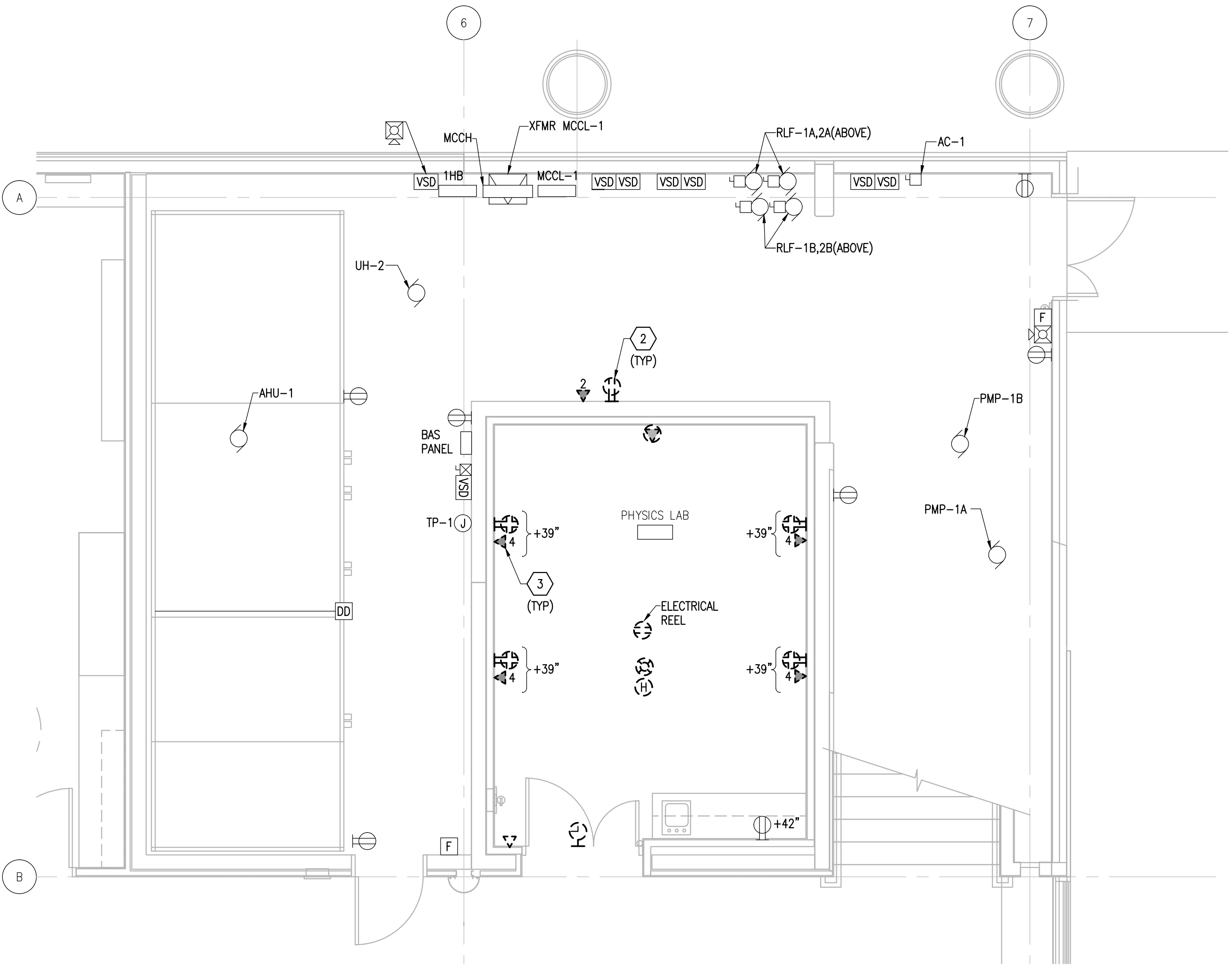
Sheet Number

E2.1

100% CONSTRUCTION DOCUMENTS



1 ENLARGED PLAN - DEMO - LIGHTING
E2.1 SCALE: 1/4" = 1'-0"



2 ENLARGED PLAN - DEMO - POWER & SPECIAL SYSTEMS
E2.1 SCALE: 1/4" = 1'-0"