

NOTIFICATION OF POTENTIAL HAZARD

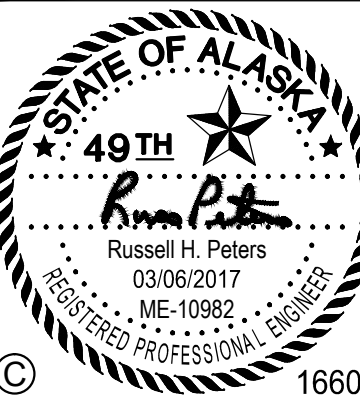
ASBESTOS CONTAINING MATERIAL (ACM) IS PRESENT IN THE BUILDING THAT MAY IMPACT THE WORK OF ALL TRADES. THE CONTRACTOR SHALL REQUIRE THEIR PERSONNEL AND ALL SUBCONTRACTOR PERSONNEL TO COORDINATE WITH OTHER TRADES AND CONDUCT THEIR WORK TO PREVENT WORKER EXPOSURE OR SITE CONTAMINATION. REFER TO DIVISION 01 AND 02 SPECIFICATIONS FOR SPECIFIC INFORMATION CONCERNING REMOVING AND DISPOSING OF THESE MATERIALS AND THE INSTALLATION OF NEW MATERIALS AND COMPONENTS. THIS NOTIFICATION IS PROVIDED IN ACCORDANCE WITH EPA AND OSHA REQUIREMENTS.

SHEET NOTES

1 CAULK ALL BOILER ROOM CEILING AND WALL PENETRATIONS SMOKE TIGHT.



www.amc-engineers.com  
Adams, Morgenthau & Co., Inc.  
C/OA No. 03442 - 907.267.9100  
701 E. Tudor Rd. Suite 250  
Anchorage, AK 99503



NSB EM-2 MECHANICAL SYSTEMS  
CONVERSION/UPGRADE

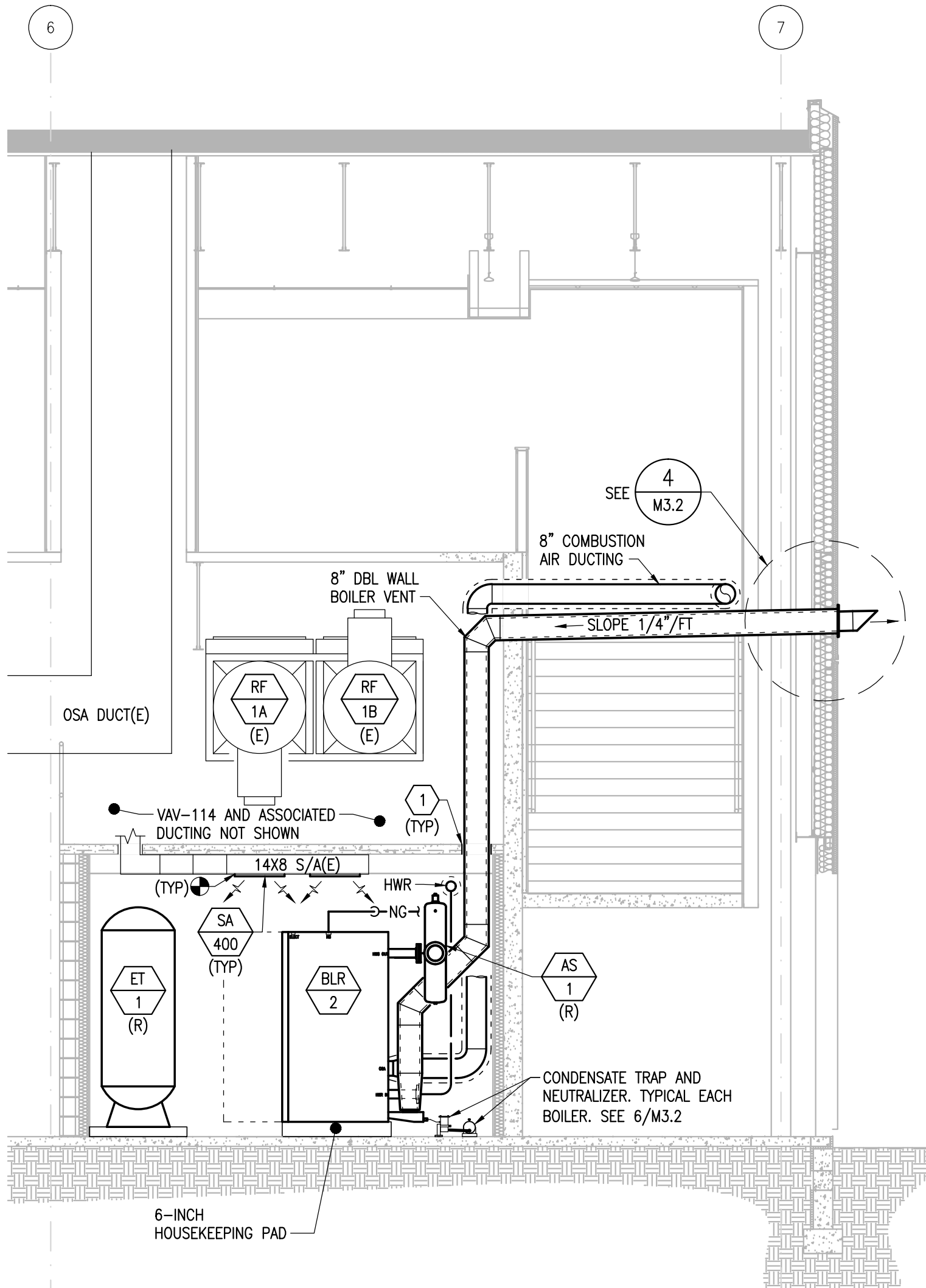
Revisions		
No.	Date	Description

Design: RHP  
Drawn: ERP/MPL  
UAA Project No.: 16-0103  
Date: 02/17/2017

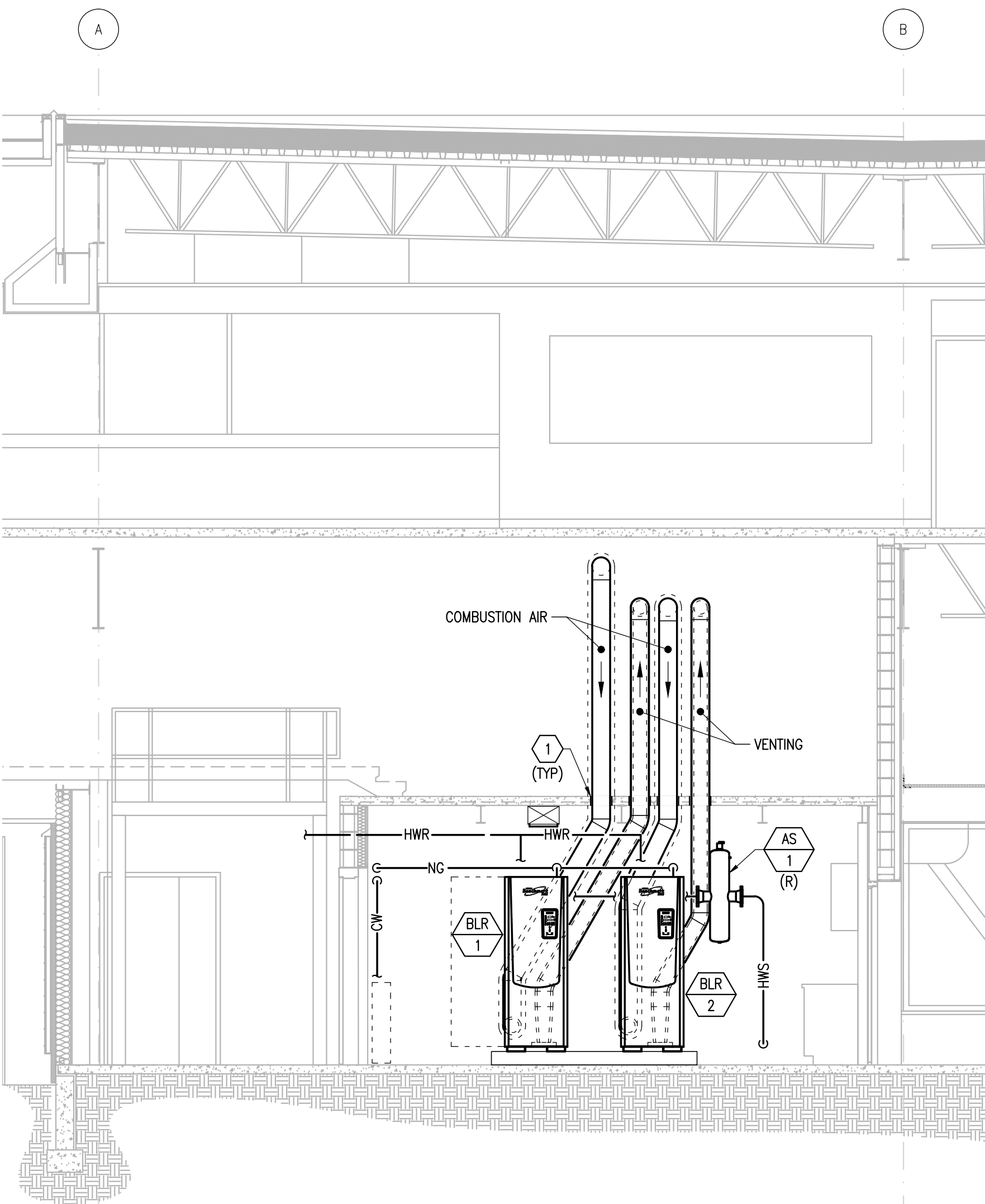
Sheet Title  
SECTIONS

Sheet Number  
**M2.2**

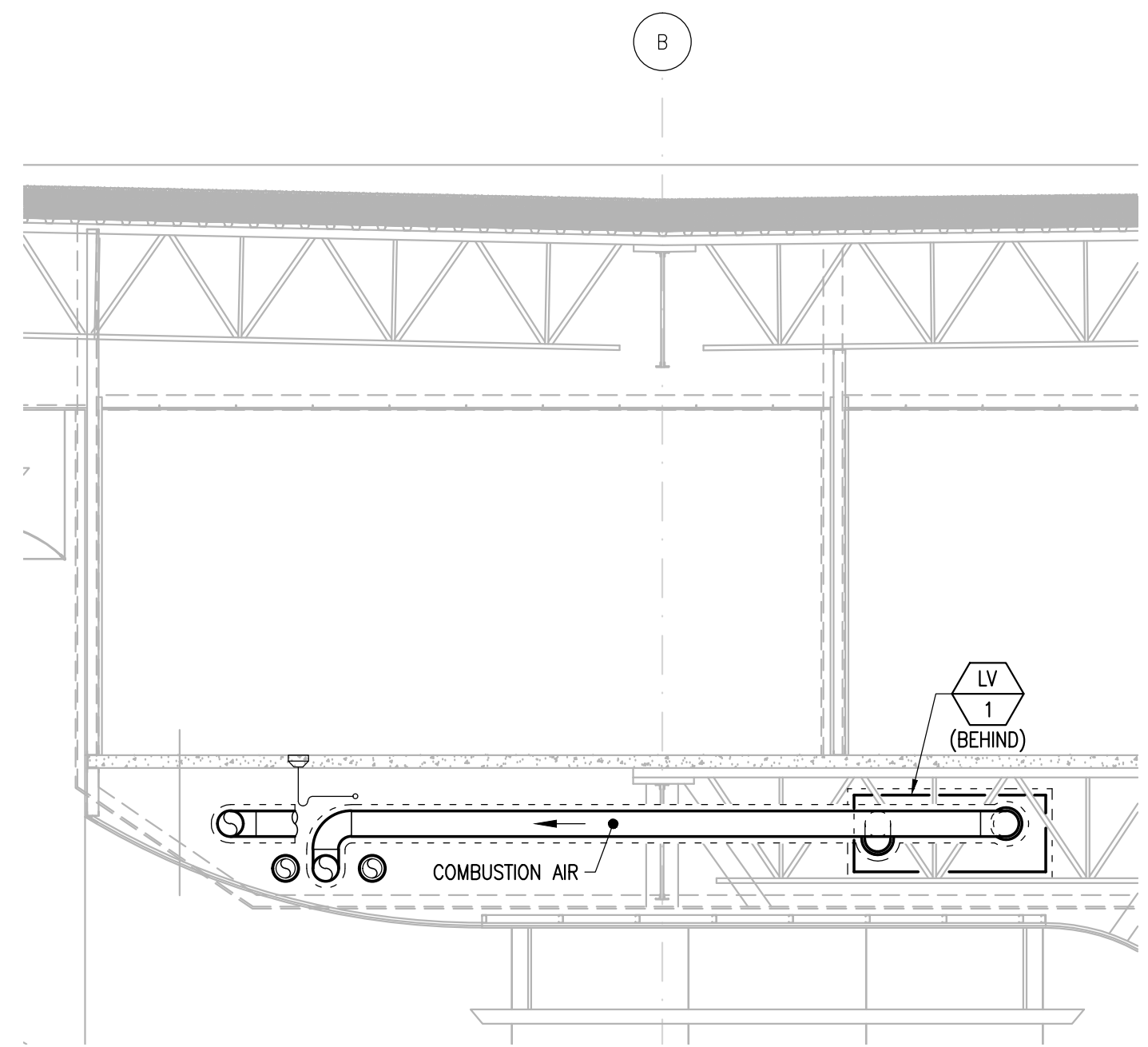
100% CONSTRUCTION DOCUMENTS



1 SECTION - WEST  
M2.2 SCALE: 1/4" = 1'-0"



2 SECTION - NORTH  
M2.2 SCALE: 1/4" = 1'-0"



3 SECTION - NORTH  
M2.2 SCALE: 1/4" = 1'-0"

