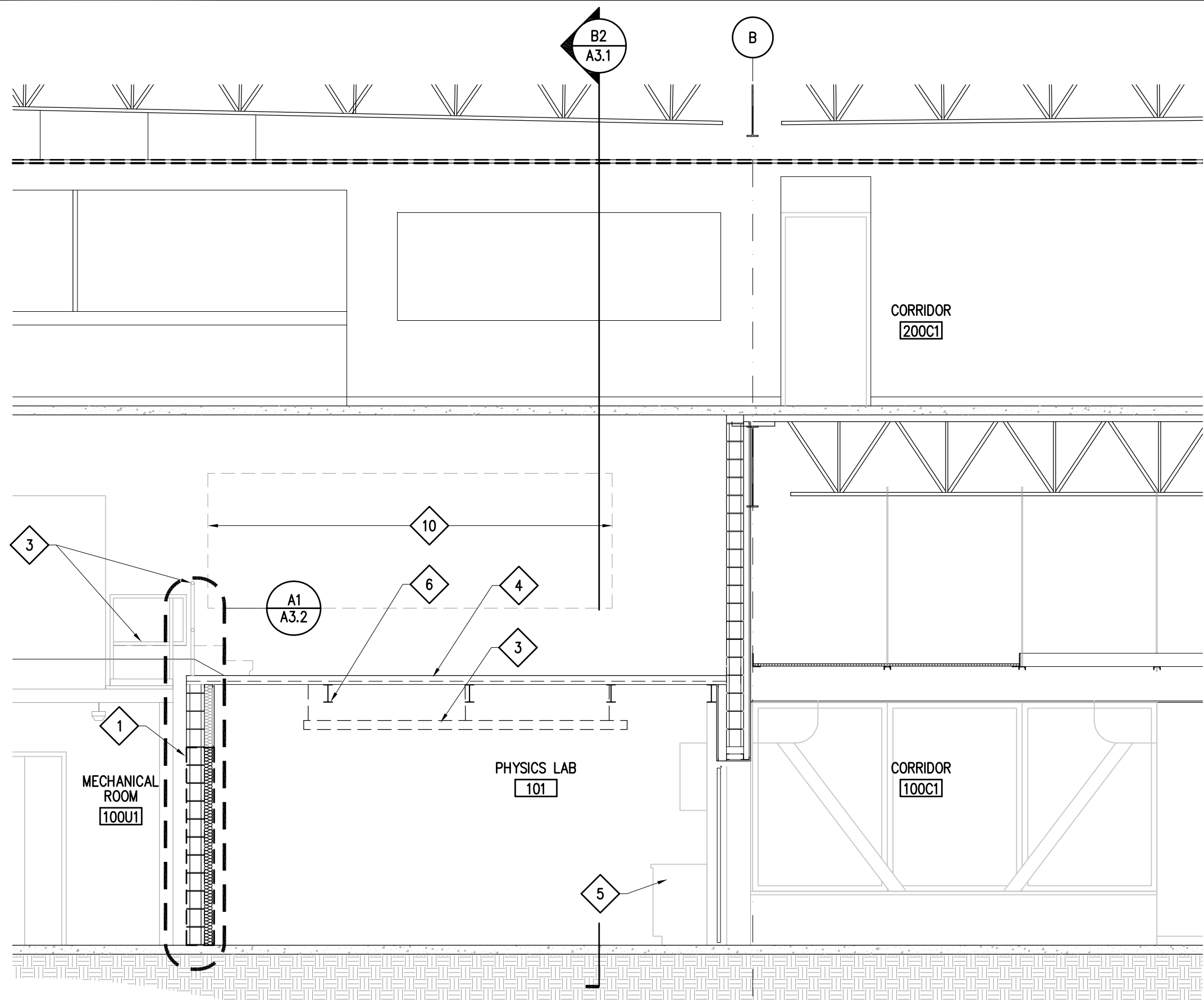
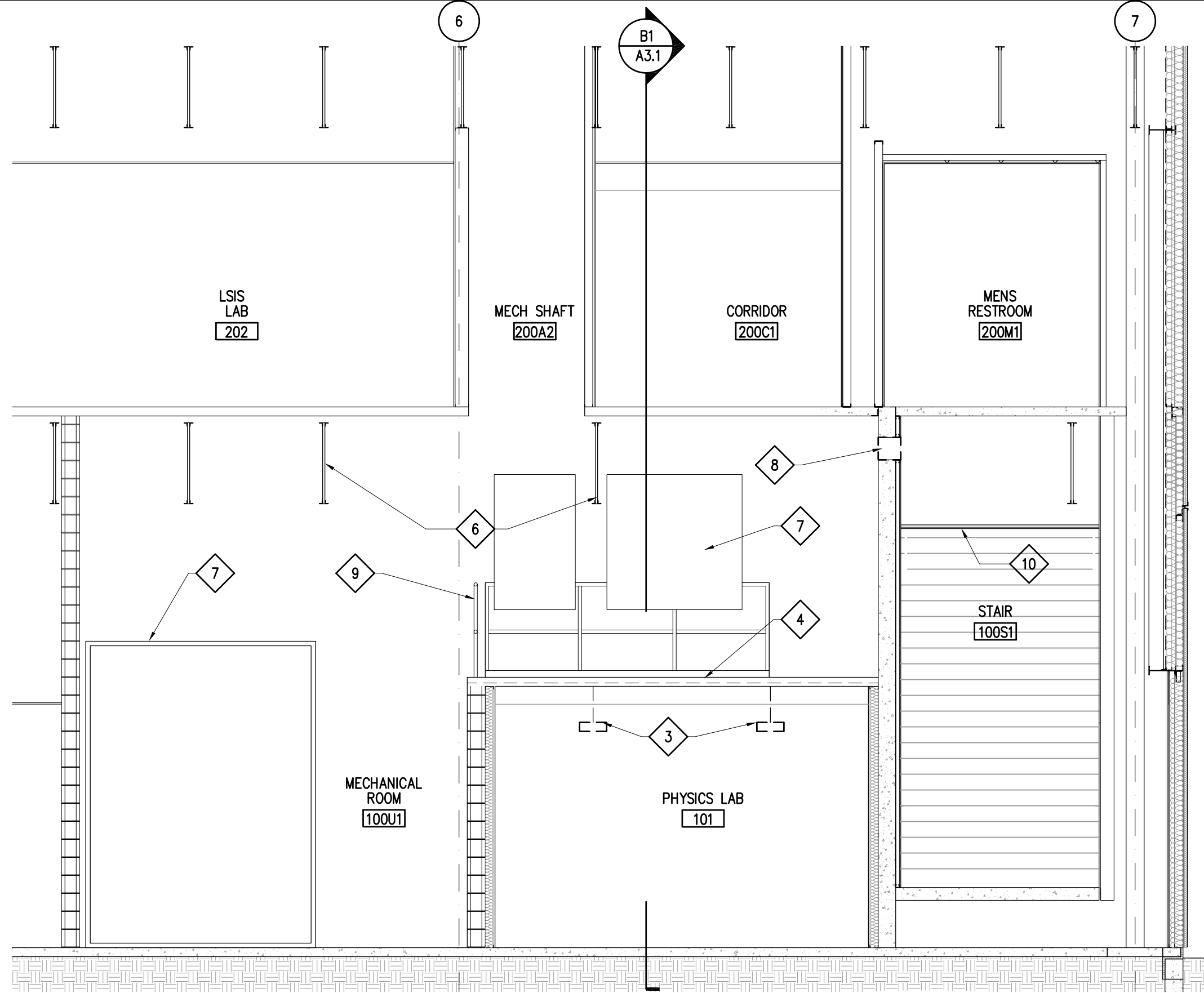


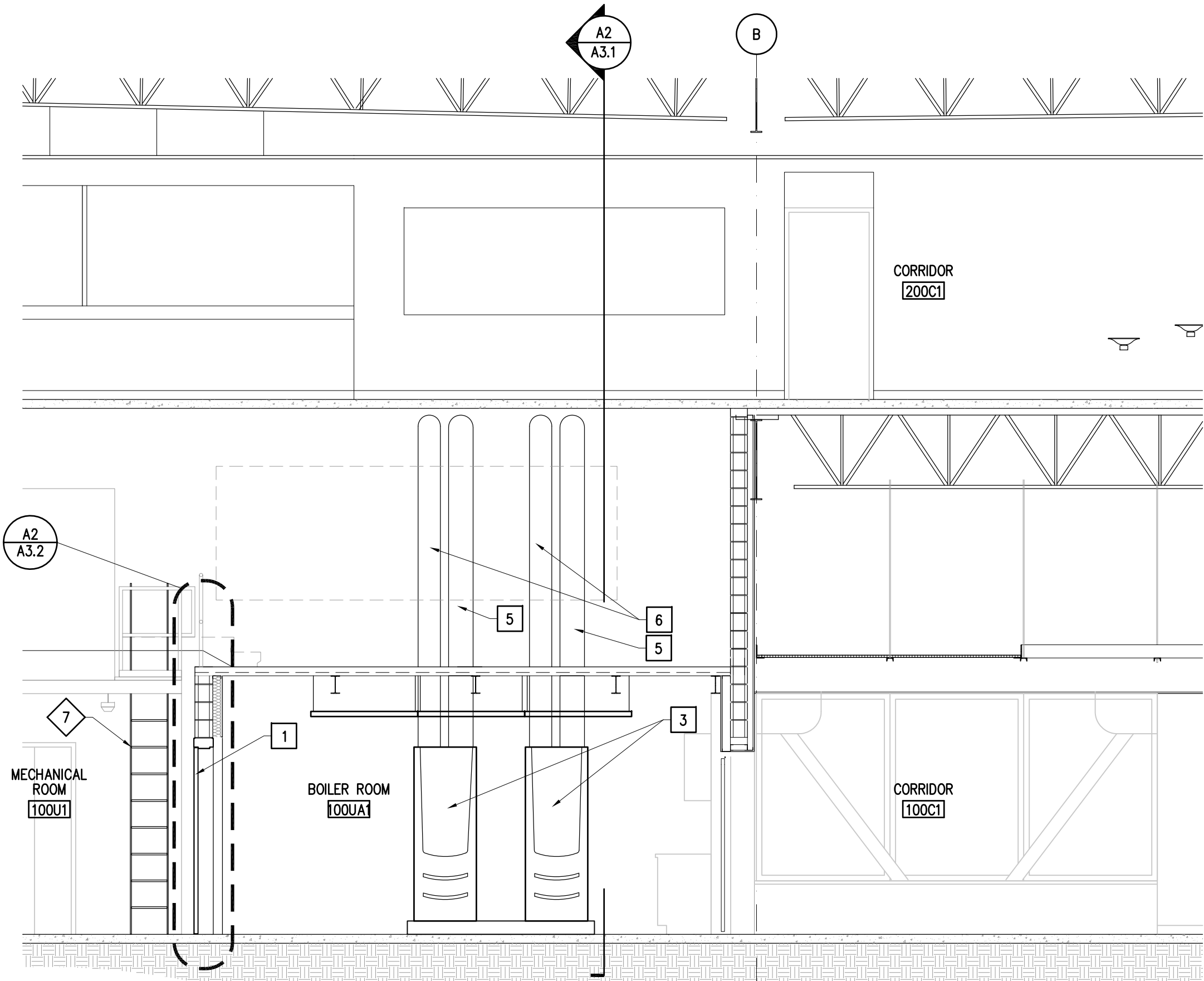
FILE NAME: W:\3.2016\16033.01\_AMC\_UAA\_EM-2\_Natural\_Science\_Bldg\DWG\16033.01\_A3.1.dwg  
PLOTED: sheet 08/03/2017 10:41:31 AM



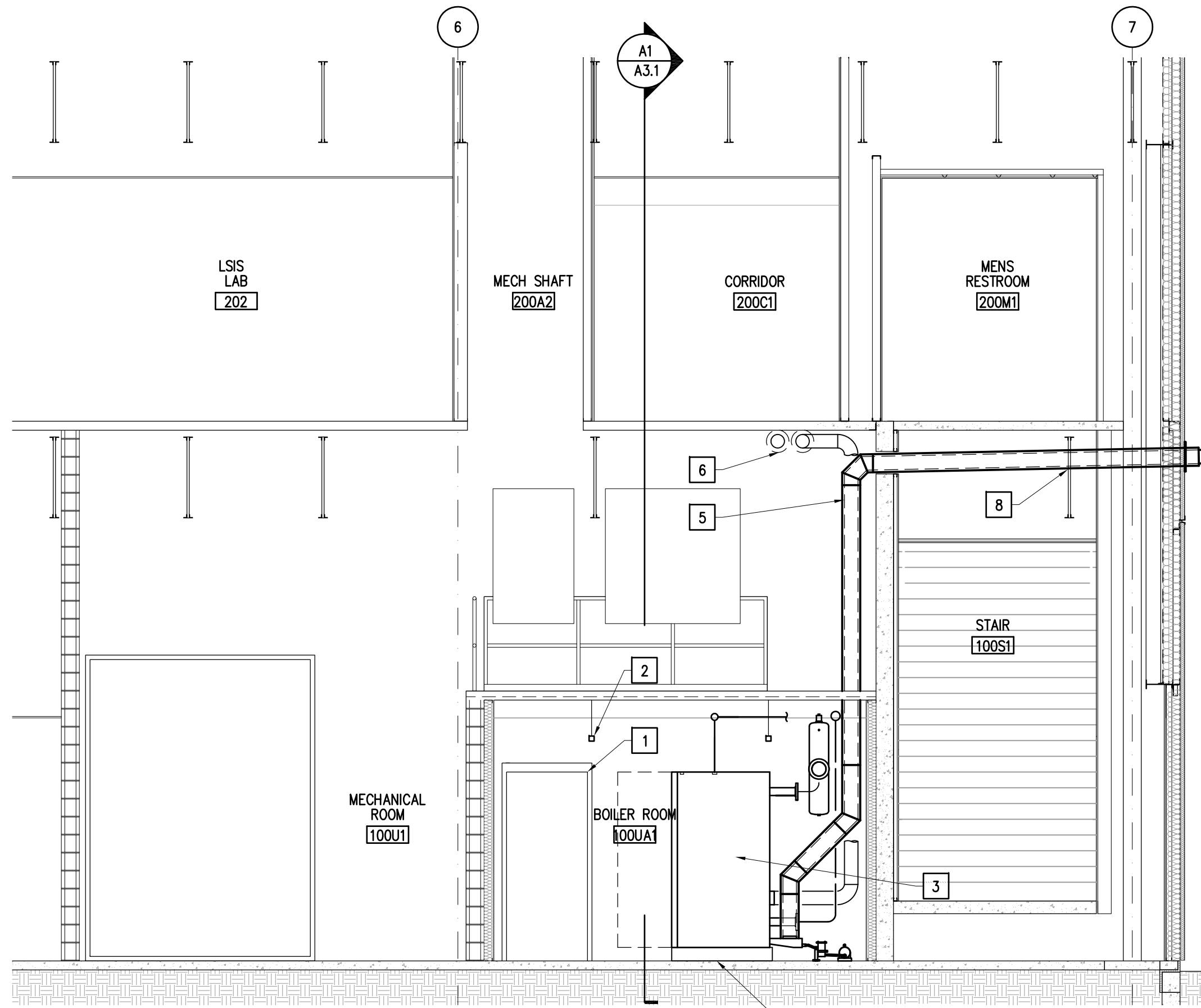
B1  
A3.1  
**BUILDING SECTION - DEMO**  
1/4" = 1'-0"



B2  
A3.1  
**BUILDING SECTION - DEMO**  
1/4" = 1'-0"



A1  
A3.1  
**BUILDING SECTION - NEW**  
1/4" = 1'-0"



A2  
A3.1  
**BUILDING SECTION - NEW**  
1/4" = 1'-0"

#### DEMO SHEET NOTES

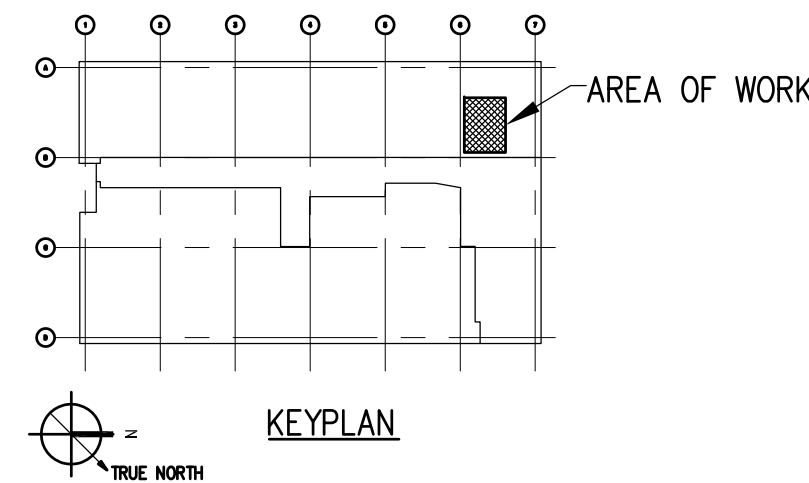
- 1 REMOVE SECTION OF EXISTING C.M.U. WALL AS REQUIRED FOR NEW DOOR OPENING.
- 2 NOT USED
- 3 REMOVE EXISTING SUSPENDED LIGHT FIXTURES.
- 4 EXISTING CONCRETE LID TO REMAIN.
- 5 EXISTING CASEWORK TO REMAIN.
- 6 EXISTING STEEL BEAMS AND FLOOR JOISTS TO REMAIN.
- 7 EXISTING HVAC EQUIPMENT IN FAN ROOM TO REMAIN.
- 8 REMOVE SECTION OF EXISTING CONCRETE WALL AS REQUIRED FOR ROUTING OF NEW INTAKE AND EXHAUST DUCTS.
- 9 EXISTING STEEL GUARD RAIL TO REMAIN, TYPICAL.
- 10 EXISTING GYPSUM BOARD SOFFIT OVER STAIR TO REMAIN

#### NOTIFICATION OF POTENTIAL HAZARD

ASBESTOS CONTAINING MATERIAL (ACM) IS PRESENT IN THE BUILDING THAT MAY IMPACT THE WORK OF ALL TRADES. THE CONTRACTOR SHALL REQUIRE THEIR PERSONNEL AND ALL SUBCONTRACTOR PERSONNEL TO COORDINATE WITH OTHER TRADES AND CONDUCT THEIR WORK TO PREVENT WORKER EXPOSURE OR SITE CONTAMINATION. REFER TO DIVISION 01 AND 02 SPECIFICATIONS FOR SPECIFIC INFORMATION CONCERNING REMOVING AND DISPOSING OF THESE MATERIALS AND THE INSTALLATION OF NEW MATERIALS AND COMPONENTS. THIS NOTIFICATION IS PROVIDED IN ACCORDANCE WITH EPA AND OSHA REQUIREMENTS.

#### NEW WORK SHEET NOTES

- 1 DOOR AND FRAME - SEE DOOR SCHEDULE.
- 2 LIGHT FIXTURES - SEE ELECTRICAL.
- 3 BOILERS - SEE MECHANICAL.
- 4 HOUSE KEEPING PAD - SEE STRUCTURAL.
- 5 INSULATED VENT DUCT - SEE MECHANICAL.
- 6 INSULATED COMBUSTION AIR DUCT - SEE MECHANICAL.
- 7 ACCESS LADDER - SEE DETAILS ON SHEET A7.1.
- 8 COORDINATE DUCT ROUTING WITH STEEL JOIST OPENINGS, SEE MECHANICAL DRAWINGS.



Revisions		
No.	Date	Description
1	03/08/17	RM. NO. REVISED

Design:	SLH
Drawn:	SLH/BLW
UAA Project No.:	16-0103
Date:	02/17/2017
Sheet Title	BUILDING SECTIONS