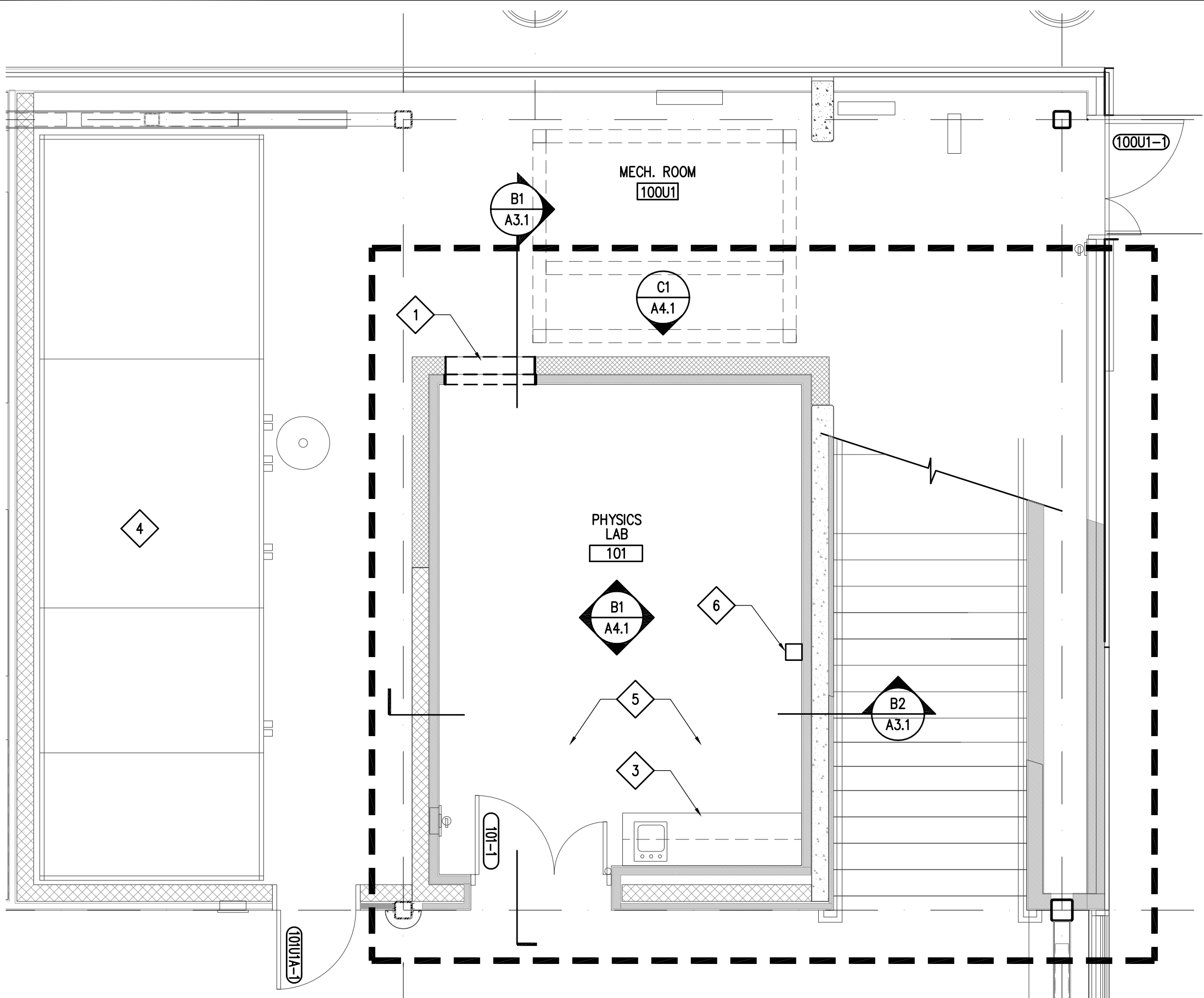
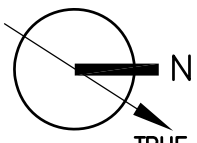
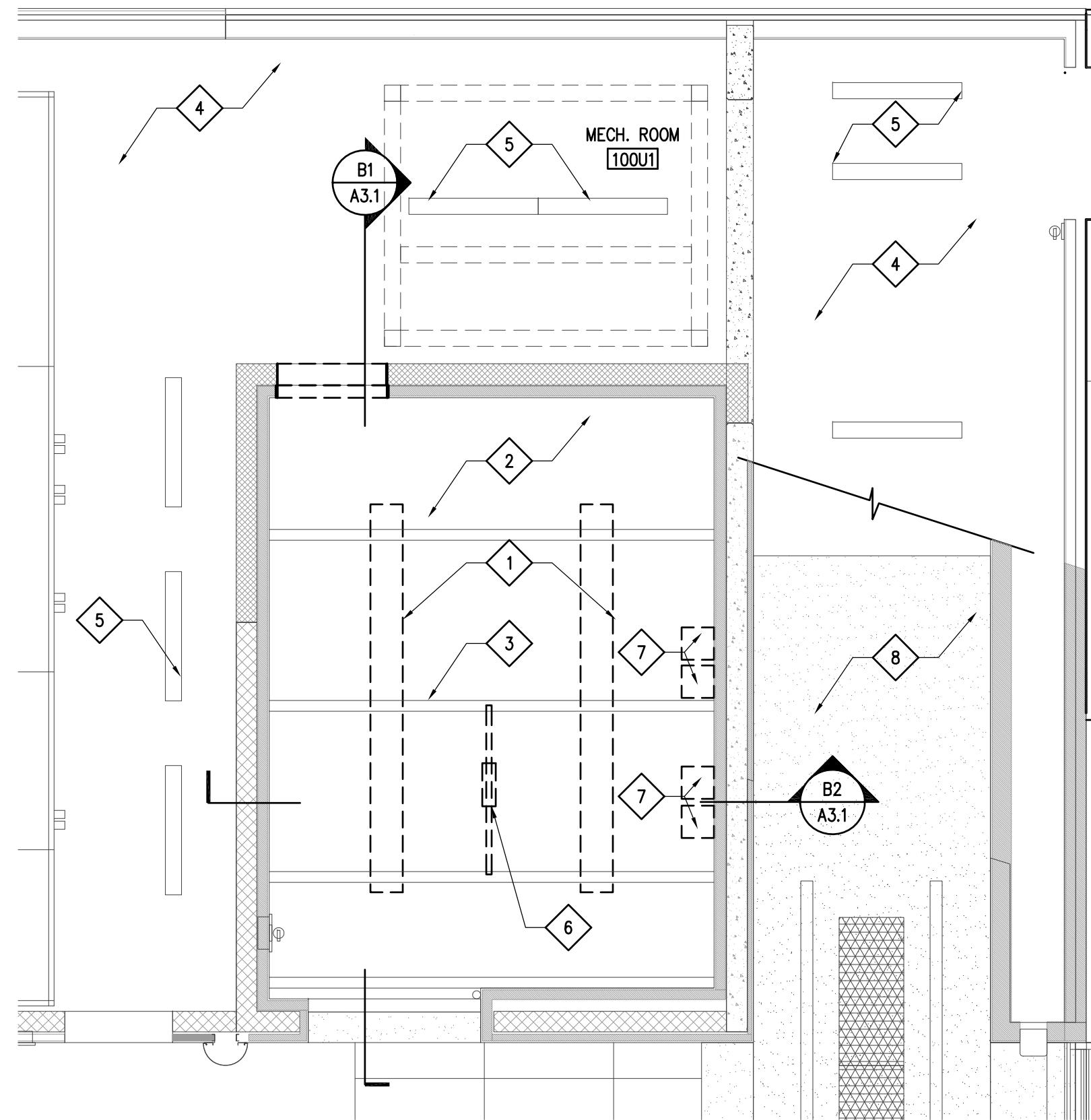


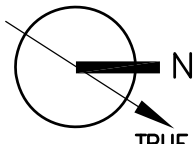
FILE NAME: W:\2016\16033.01\_AMC\_UAA\_EM-2\_Natural Science Bldg\DWG\16033.01\_A1.1.dwg  
PLOTED: sheet 08/03/2017 10:47:23 AM

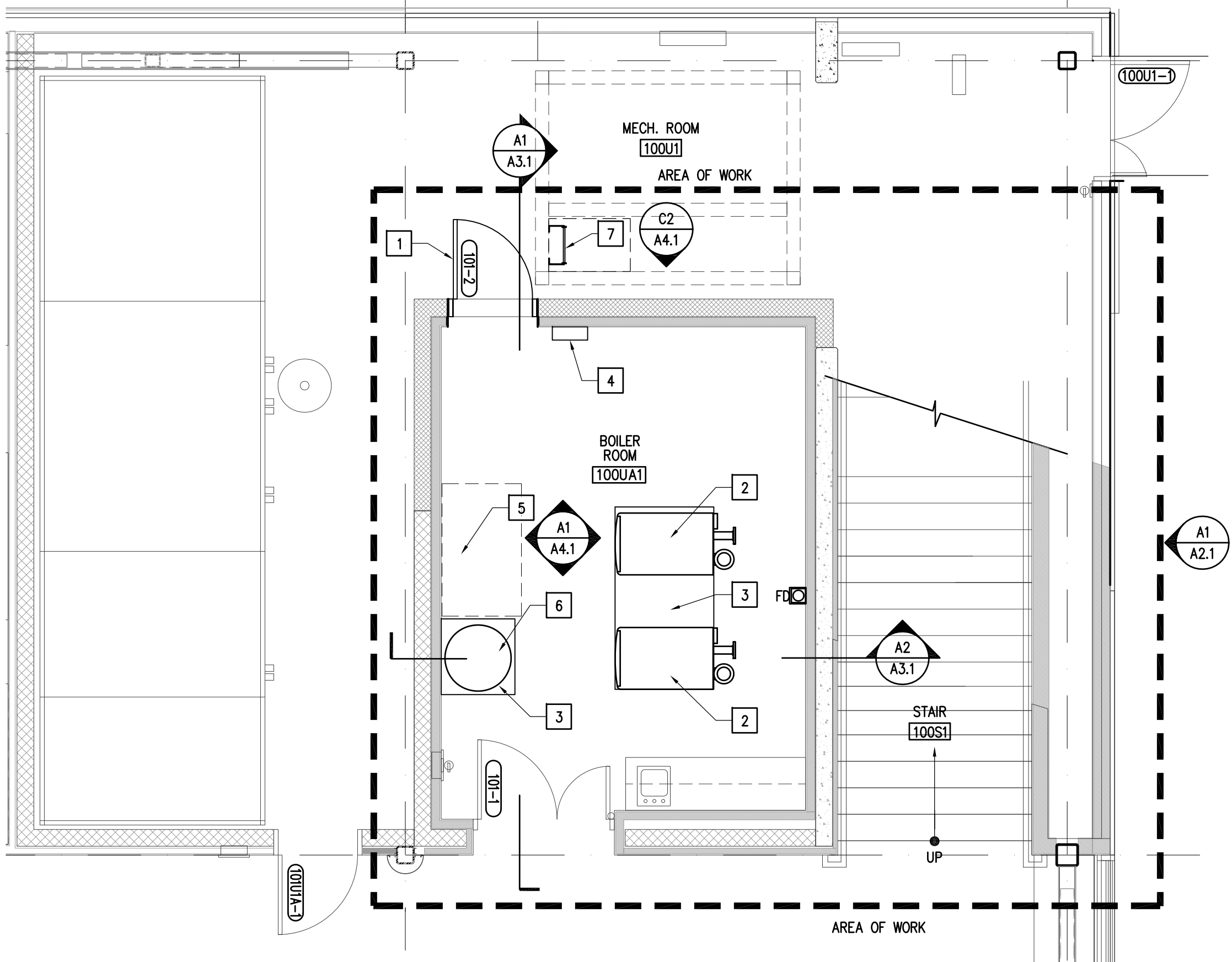


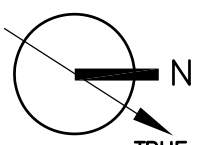
 **FLOOR PLAN - DEMO**  
1/4" = 1'-0"

- DEMO SHEET NOTES**
- 1 REMOVE SECTION OF EXISTING C.M.U. WALL AS REQUIRED FOR NEW DOOR OPENING.
  - 2 NOT USED.
  - 3 EXISTING CASEWORK TO REMAIN.
  - 4 EXISTING HVAC EQUIPMENT IN FAN ROOM TO REMAIN.
  - 5 REMOVE EXISTING RESILIENT FLOORING.
  - 6 REMOVE SECTION OF EXISTING CONCRETE FLOOR SLAB AS REQUIRED FOR INSTALLATION OF FLOOR DRAIN - SEE MECHANICAL DRAWINGS.

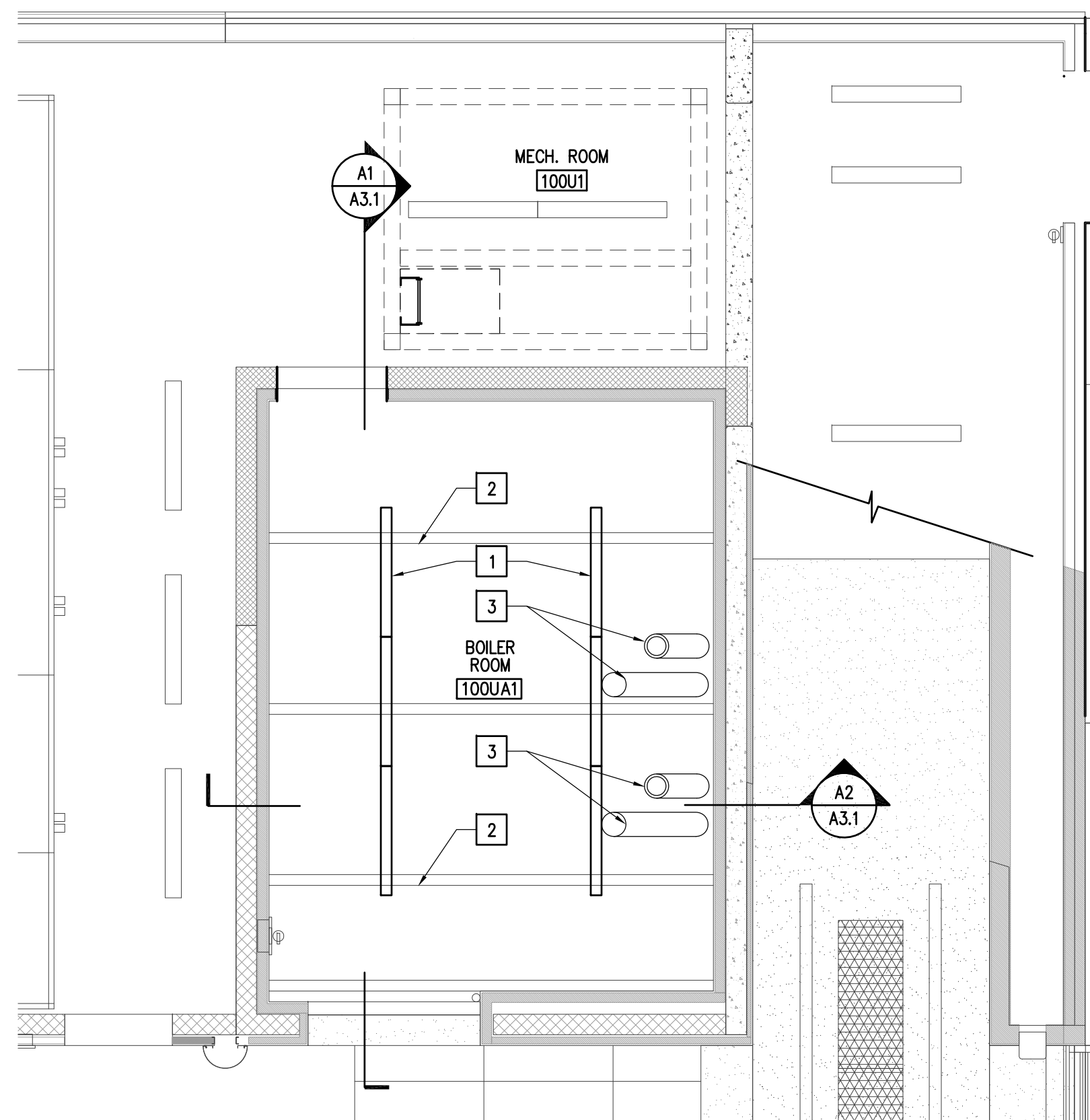


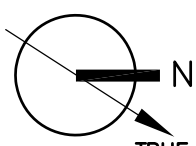
 **REFLECTED CEILING PLAN - DEMO**  
1/4" = 1'-0"



 **FLOOR PLAN - NEW**  
1/4" = 1'-0"

- NEW WORK SHEET NOTES**
- 1 HOLLOW METAL DOOR AND FRAME - SEE DOOR SCHEDULE.
  - 2 BOILERS - SEE MECHANICAL DRAWINGS.
  - 3 HOUSE KEEPING PAD - SEE STRUCTURAL DRAWINGS.
  - 4 CONTROL PANEL - SEE MECHANICAL DRAWINGS.
  - 5 AREA FOR BAS CONTROL STATION.
  - 6 EXPANSION TANK - SEE MECHANICAL DRAWINGS.
  - 7 ACCESS LADDER - SEE SHEET A7.1.



 **REFLECTED CEILING PLAN - NEW**  
1/4" = 1'-0"

**NOTIFICATION OF POTENTIAL HAZARD**

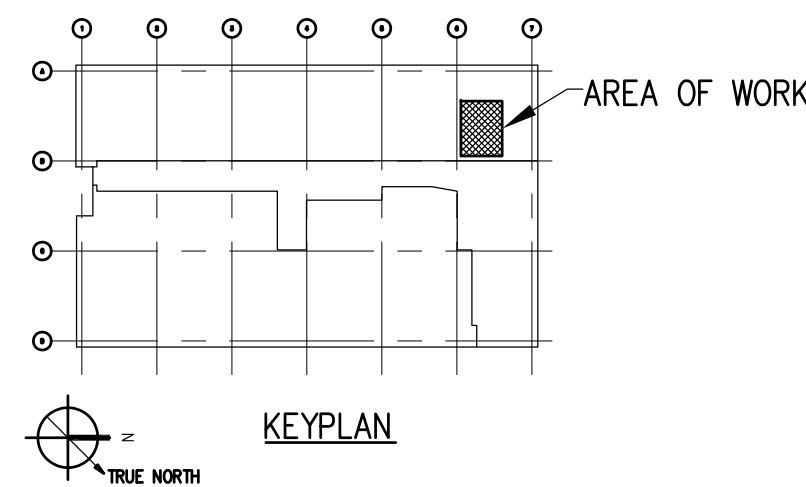
ASBESTOS CONTAINING MATERIAL (ACM) IS PRESENT IN THE BUILDING THAT MAY IMPACT THE WORK OF ALL TRADES. THE CONTRACTOR SHALL REQUIRE THEIR PERSONNEL AND ALL SUBCONTRACTOR PERSONNEL TO COORDINATE WITH OTHER TRADES AND CONDUCT THEIR WORK TO PREVENT WORKER EXPOSURE OR SITE CONTAMINATION. REFER TO DIVISION 01 AND 02 SPECIFICATIONS FOR SPECIFIC INFORMATION CONCERNING REMOVING AND DISPOSING OF THESE MATERIALS AND THE INSTALLATION OF NEW MATERIALS AND COMPONENTS. THIS NOTIFICATION IS PROVIDED IN ACCORDANCE WITH EPA AND OSHA REQUIREMENTS.

**DEMO SHEET NOTES**

- 1 REMOVE EXISTING SUSPENDED LIGHT FIXTURES.
- 2 EXISTING METAL DECKING AND CONCRETE LID TO REMAIN.
- 3 EXISTING STEEL BEAMS TO REMAIN.
- 4 OPEN TO STRUCTURE ABOVE.
- 5 EXISTING LIGHT FIXTURES IN FAN ROOM TO REMAIN.
- 6 REMOVE EXISTING CEILING MOUNTED POWER REEL AND TURN OVER TO OWNER.
- 7 REMOVE SECTION OF EXISTING METAL DECKING AS REQUIRED TO ROUTE EXHAUST AND INTAKE DUCTS THROUGH CONCRETE LID - SEE MECHANICAL DRAWINGS.
- 8 GYPSUM BOARD SOFFIT AT STAIR 100S1 TO REMAIN.

**NEW WORK SHEET NOTES**

- 1 LIGHT FIXTURES - SEE ELECTRICAL.
- 2 EXISTING STEEL BEAMS - PAINT.
- 3 INSULATED DUCTWORK FOR INTAKE AND EXHAUST - SEE MECHANICAL DRAWINGS.



**NSB EM-2 MECHANICAL SYSTEMS  
CONVERSION/UPGRADE**

Revisions		
No.	Date	Description
1	03/08/17RM.	NO. REVISED

Design: SLH  
Drawn: SLH/BLW  
UAA Project No.: 16-0103  
Date: 02/17/2017  
Sheet Title  
DEMO & NEW FLOOR  
PLANS, AND DEMO  
& NEW CEILING  
PLANS

Sheet Number  
**A1.1**