

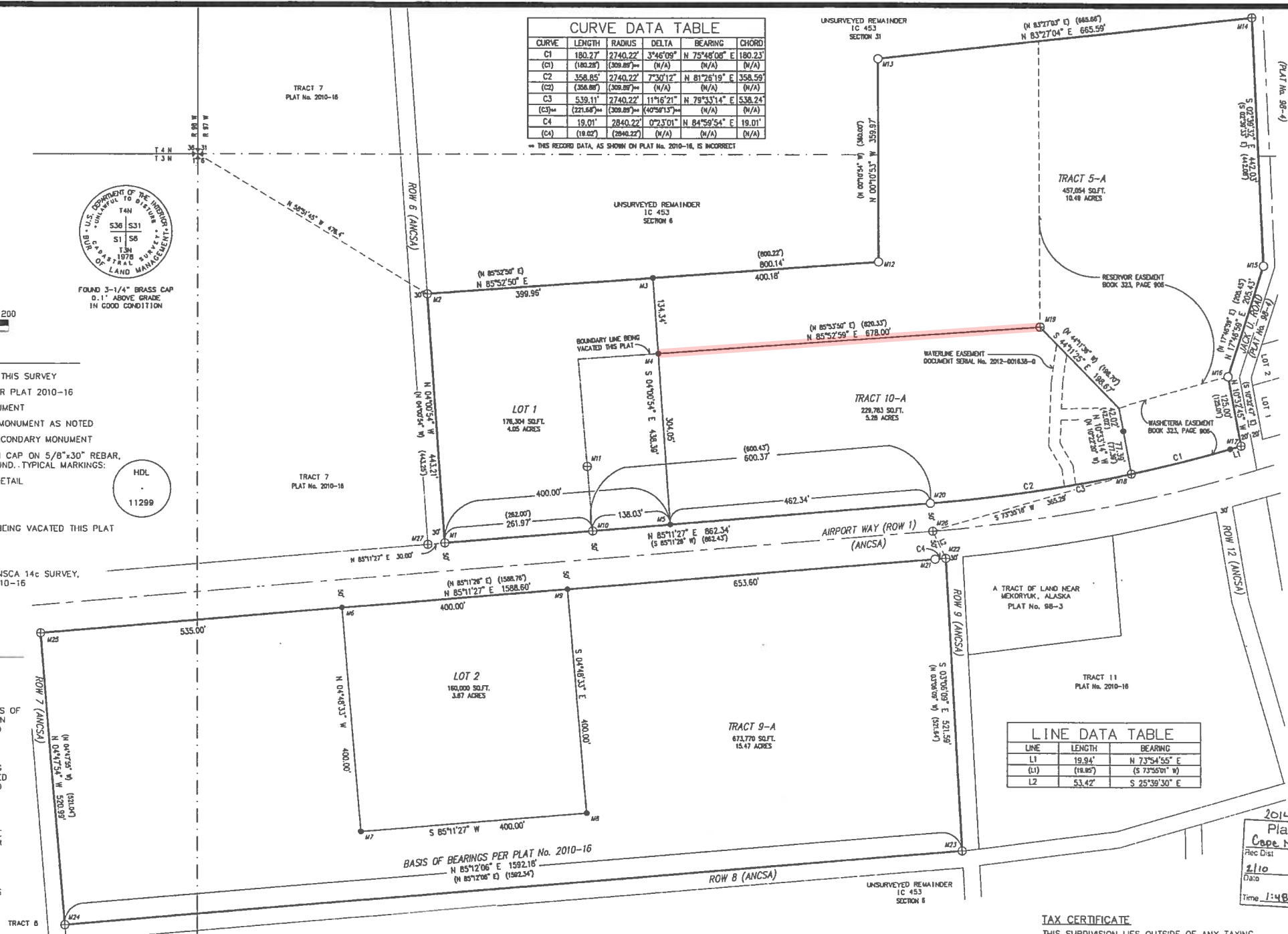
FOUND 3-1/4" BRASS CAP  
0.1" ABOVE GRADE  
IN GOOD CONDITION

- LEGEND:**
- S 57°40'49" E 397.54' MEASURED DATA THIS SURVEY
  - (S 57°40'49" E) 397.54' RECORD DATA PER PLAT 2010-16
  - ⊕ FOUND BLM MONUMENT
  - ⊕ FOUND PRIMARY MONUMENT AS NOTED
  - FOUND ANCSA SECONDARY MONUMENT
  - SET 2" ALUMINUM CAP ON 5/8"x30" REBAR, FLUSH WITH GROUND. TYPICAL MARKINGS:
  - M1 SEE MONUMENT DETAIL
  - SQ.FT. SQUARE FEET
  - SURVEYED LINE
  - BOUNDARY LINE BEING VACATED THIS PLAT
  - CENTERLINE
  - UNSURVEYED
  - REPLATTED BY ANCSA 14c SURVEY, PER PLAT No. 2010-16

- NOTES:**
1. THE ERROR OF CLOSURE OF THIS SURVEY DOES NOT EXCEED 1:5000.
  2. ALL BEARINGS SHOWN ARE TRUE BEARING AS ORIENTED TO THE BASIS OF BEARING AND THE DISTANCES SHOWN ARE REDUCED TO HORIZONTAL FIELD DISTANCE.
  3. THIS VACATION/REPLAT IS IN COMPLIANCE WITH STATE PLATTING RESOLUTION NO. 2011-09, APPROVED OCTOBER 14, 2011, EV-3-155 AND AS 29.40.120-.140.
  4. THIS PLAT IS SUBJECT TO EXCEPTIONS, RESERVATIONS, AGREEMENTS, EASEMENTS, AND USE RIGHTS AS SET FORTH IN INTERIM CONVEYANCE No. 453 (BOOK 300, PAGE 222 CNRD).
  5. THIS PLAT IS SUBJECT TO RESERVATIONS AND EXCEPTIONS AS CONTAINED IN U.S. PATENT NUMBER 50-2007-0329.

CURVE DATA TABLE					
CURVE	LENGTH	RADIUS	DELTA	BEARING	CHORD
C1	180.27'	2740.22'	3°46'09"	N 75°48'08" E	180.23'
(C1)	(180.28')	(309.88')	(N/A)	(N/A)	(N/A)
C2	358.85'	2740.22'	7°30'12"	N 81°26'19" E	358.59'
(C2)	(358.88')	(309.88')	(N/A)	(N/A)	(N/A)
C3	539.11'	2740.22'	11°16'21"	N 79°33'14" E	538.24'
(C3)	(539.14')	(309.88')	(N/A)	(N/A)	(N/A)
C4	19.01'	2840.22'	0°23'01"	N 84°59'54" E	19.01'
(C4)	(19.02')	(2840.22')	(N/A)	(N/A)	(N/A)

→ THIS RECORD DATA, AS SHOWN ON PLAT No. 2010-16, IS INCORRECT



LINE DATA TABLE		
LINE	LENGTH	BEARING
L1	19.94'	N 73°54'55" E
(L1)	(19.85')	(S 73°58'01" W)
L2	53.42'	S 25°39'30" E

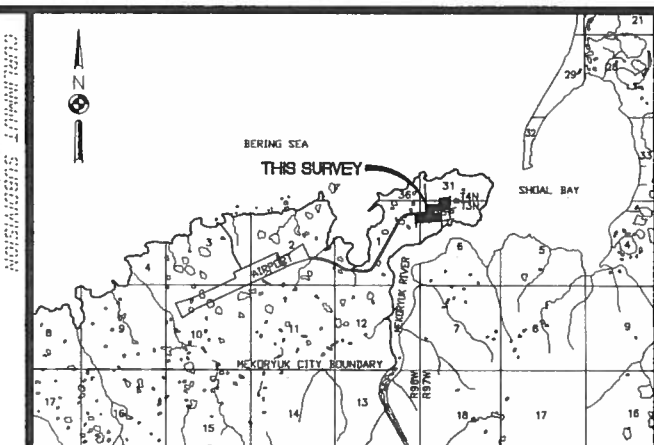
**MONUMENT DESCRIPTIONS:**

M1 FOUND 3-1/4" BRASS CAP MONUMENT ON 2-1/2" DIAMETER STAINLESS STEEL POST LSS480 2008	M2 FOUND 3-1/4" BRASS CAP MONUMENT ON 2-1/2" DIAMETER STAINLESS STEEL POST LSS480 2008	M3 SET 2" ALUMINUM MONUMENT ON 5/8" REBAR FLUSH WITH GROUND LS 10192 2011	M4 SET 2" ALUMINUM MONUMENT ON 5/8" REBAR FLUSH WITH GROUND LS 10192 2011	M5 SET 2" ALUMINUM MONUMENT ON 5/8" REBAR FLUSH WITH GROUND LS 10192 2011	M6 SET 2" ALUMINUM MONUMENT ON 5/8" REBAR FLUSH WITH GROUND LS 10192 2011	M7 SET 2" ALUMINUM MONUMENT ON 5/8" REBAR FLUSH WITH GROUND LS 10192 2011	M8 SET 2" ALUMINUM MONUMENT ON 5/8" REBAR FLUSH WITH GROUND LS 10192 2011	M9 SET 2" ALUMINUM MONUMENT ON 5/8" REBAR FLUSH WITH GROUND LS 10192 2011	M10 FOUND 3-1/4" BRASS CAP MONUMENT ON 2-1/2" DIAMETER STAINLESS STEEL POST LSS480 2008	M11 FOUND 3-1/4" BRASS CAP MONUMENT ON 2-1/2" DIAMETER STAINLESS STEEL POST LSS480 2008	M12 FOUND 3" ALUMINUM MONUMENT ON 5/8" REBAR LSS480 2008	M13 FOUND 2" ALUMINUM MONUMENT ON 5/8" REBAR LSS480 2008	M14 FOUND 2-1/2" BRASS CAP MONUMENT ON 2-1/2" DIAMETER STAINLESS STEEL POST LSS480 2008	M15 FOUND 2" ALUMINUM MONUMENT ON 5/8" DIAMETER REBAR LSS480 2008
M16 FOUND 2" ALUMINUM MONUMENT ON 5/8" DIAMETER REBAR LSS480 2008	M17 FOUND 2-1/2" BRASS CAP MONUMENT ON 2-1/2" DIAMETER STAINLESS STEEL POST LSS480 2008	M18 FOUND 2-1/2" BRASS CAP MONUMENT ON 2-1/2" DIAMETER STAINLESS STEEL POST LSS480 2008	M19 FOUND 3-1/4" BRASS CAP MONUMENT ON 2-1/2" DIAMETER STAINLESS STEEL POST LSS480 2008	M20 FOUND 2" ALUMINUM MONUMENT ON 5/8" REBAR LSS480 2008	M21 FOUND 2-1/2" ALUMINUM MONUMENT ON 5/8" REBAR LSS480 2008	M22 FOUND 3-1/4" BRASS CAP MONUMENT ON 2-1/2" DIAMETER STAINLESS STEEL POST LSS480 2008	M23 FOUND 3-1/4" BRASS CAP MONUMENT ON 2-1/2" DIAMETER STAINLESS STEEL POST LSS480 2008	M24 FOUND 3-1/4" BRASS CAP MONUMENT ON 2-1/2" DIAMETER STAINLESS STEEL POST LSS480 2008	M25 FOUND 3-1/4" BRASS CAP MONUMENT ON 2-1/2" DIAMETER STAINLESS STEEL POST LSS480 2008	M26 FOUND 2-1/2" BRASS CAP MONUMENT ON 2" BELOW GRADE LSS480 2008	M27 FOUND 3-1/4" BRASS CAP MONUMENT ON 0.1" ABOVE GRADE LSS480 2008			

**TAX CERTIFICATE**  
THIS SUBDIVISION LIES OUTSIDE OF ANY TAXING AUTHORITY, AT THE TIME OF FILING.

**SURVEYOR'S CERTIFICATE**  
I HEREBY CERTIFY THAT I AM PROPERLY REGISTERED AND LICENSED TO PRACTICE LAND SURVEYING IN THE STATE OF ALASKA, THAT THIS PLAT REPRESENTS A SURVEY MADE BY ME OR UNDER MY DIRECT SUPERVISION, THAT THE MONUMENTS SHOWN HEREON EXIST AS DESCRIBED, AND THAT ALL DIMENSION AND OTHER DETAILS ARE CORRECT.

DATE: 10-18-13 REGISTRATION NO.: 10192  
REGISTERED LAND SURVEYOR: BRADFORD J. RINCKEY, P.L.S.



**VICINITY MAP**  
USGS QUAD: NUNIVAK ISLAND (B-4), 1952  
SCALE 1" = 1 MILE

**CERTIFICATE OF OWNERSHIP**  
I, THE UNDERSIGNED, CERTIFY THAT THE NIMA CORPORATION IS THE OWNER OF MEKORYUK WIND FARM SUBDIVISION, AS SHOWN ON THIS PLAT. I APPROVE THIS SURVEY AND PLAT FOR THE NIMA CORPORATION.  
DATE: 10/18/2013  
WAYNE W. DON, CHAIRMAN  
NIMA CORPORATION  
P.O. Box 52  
MEKORYUK, ALASKA 99630

**NOTARY'S ACKNOWLEDGMENT**  
SUBSCRIBED AND SWORN BEFORE ME THIS 16th DAY OF OCTOBER, 2013  
BY: VARIANNE NOCELO (NAME)  
CUSTOMER SERVICE REP (TITLE)  
MY COMMISSION EXPIRES: JULY 27, 2017

**CERTIFICATE OF OWNERSHIP**  
I, THE UNDERSIGNED, CERTIFY THAT THE CITY OF MEKORYUK, ALASKA IS THE OWNER OF MEKORYUK WIND FARM SUBDIVISION, AS SHOWN ON THIS PLAT. I APPROVE THIS SURVEY AND PLAT FOR THE CITY OF MEKORYUK, ALASKA.  
DATE: 10-15-13  
MONA P. DAVID, CITY ADMINISTRATOR  
CITY OF MEKORYUK, ALASKA  
P.O. Box 29  
MEKORYUK, ALASKA 99630

**NOTARY'S ACKNOWLEDGMENT**  
SUBSCRIBED AND SWORN BEFORE ME THIS 15 DAY OF OCTOBER, 2013  
BY: JOHN F. SMITH JR. (NAME)  
OPERATION SUPERVISOR II (TITLE)  
ANCHORAGE (LOCATION)  
NOTARY PUBLIC FOR ALASKA  
MY COMMISSION EXPIRES: 8-21-2017

**PLAT APPROVAL**  
THIS PLAT IS APPROVED BY THE COMMISSIONER OF THE DEPARTMENT OF NATURAL RESOURCES, OR THE COMMISSIONER'S DESIGNEE, IN ACCORDANCE WITH AS 40.15  
COMMISSIONER: HULL JENNINGS DATE: Feb 03, 2014

DATE OF SURVEY BEGINNING 06/05/2009 ENDING 06/06/2009	BRADFORD RINCKEY HDL ENGINEERING CONSULTANTS 3335 ARCTIC BLVD., STE. 100 ANCHORAGE, ALASKA 99503
A PLAT OF MEKORYUK WIND FARM SUBDIVISION CREATING LOTS 1 & 2 AND TRACTS 5-A, 9-A & 10 A	
A SUBDIVISION OF TRACTS 5, 9 AND 10 OF ANCSA SECTION 14(C), TRACTS 1-28, ROAD ROWS 1-39; AND BLOCKS 1 THROUGH 13 WITH ASSOCIATED LOTS LOCATED WITHIN PROTRACTED SECTION 6, T 3 N, R 97 W & SECTION 31, T 4 N, R 97 W & SECTION 1, T 3 N, R 98 W, SEWARD MERIDIAN, STATE OF ALASKA CONTAINING 38.96± ACRES CAPE NOME RECORDING DISTRICT	
DRAWN BY: FJS/RJKA	SHEET 1 OF 1
DATE: 10/14/13	DNR FILE NO.
SCALE: 1 INCH = 100 FEET	CHECKED: FJS PA20110023/EV-3-155