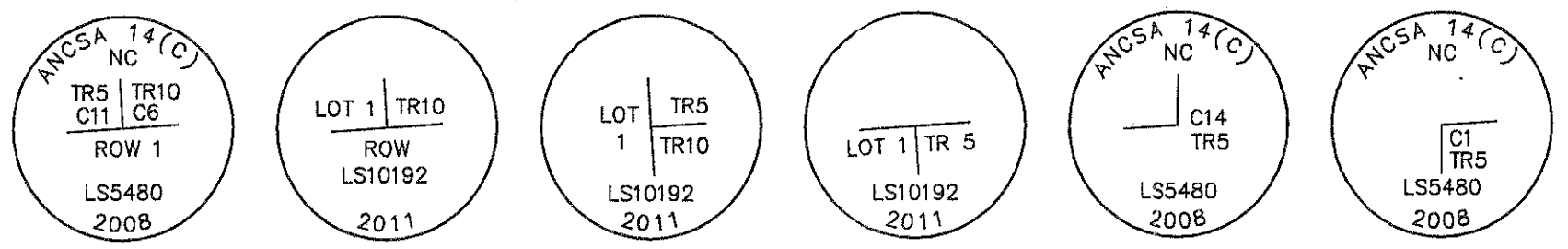


CAP MARKINGS



FOUND 2 1/2" BRASS CAP ON STAINLESS STEEL POST, 1" ABOVE GROUND
FOUND 2" ALUMINUM CAP ON 5/8" REBAR 2" ABOVE GROUND
FOUND 2" ALUMINUM CAP ON 5/8" REBAR 2" ABOVE GROUND
FOUND 2" ALUMINUM CAP ON 5/8" REBAR 2" ABOVE GROUND
FOUND 2" ALUMINUM CAP ON 5/8" REBAR 1" ABOVE GROUND
FOUND 2" ALUMINUM CAP ON 5/8" REBAR 1" ABOVE GROUND

A

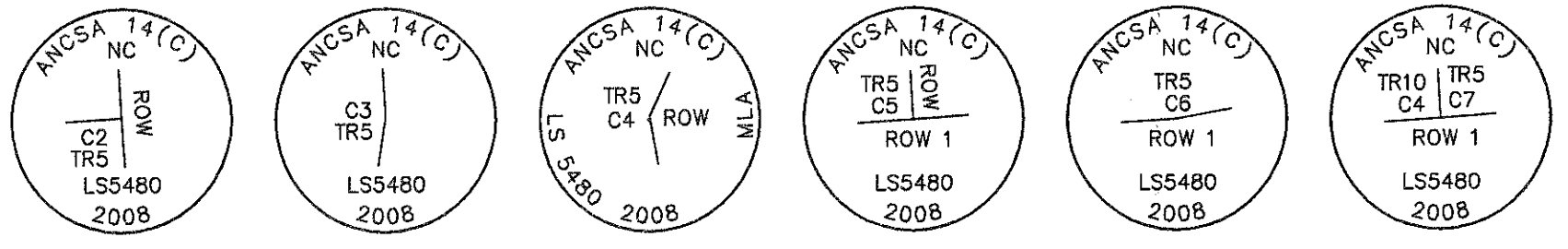
B

C

D

E

F



FOUND 2 1/2" BRASS CAP ON STAINLESS STEEL POST, 2" ABOVE GROUND
FOUND 2" ALUMINUM CAP ON 5/8" REBAR 1" ABOVE GROUND
FOUND 2" ALUMINUM CAP ON 5/8" REBAR 1" ABOVE GROUND
FOUND 2 1/2" BRASS CAP ON STAINLESS STEEL POST, 1" ABOVE GROUND
FOUND 2" ALUMINUM CAP ON 5/8" REBAR FLUSH WITH GROUND
FOUND 2 1/2" BRASS CAP ON STAINLESS STEEL POST, FLUSH WITH GROUND

G

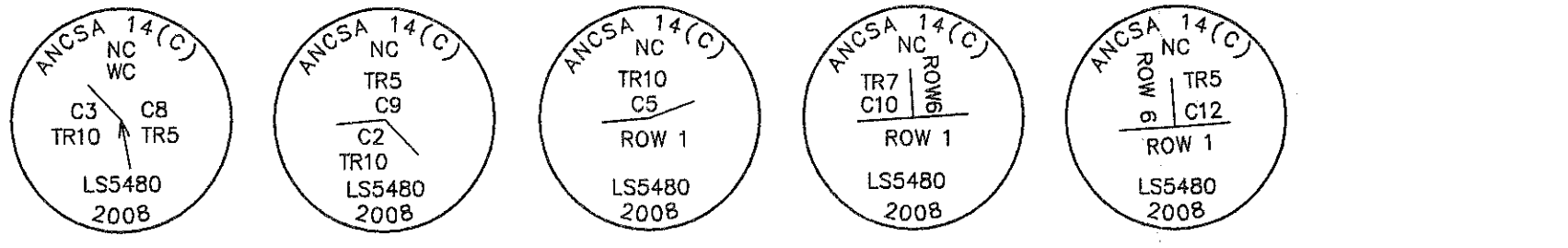
H

I

J

K

L



FOUND 2" ALUMINUM CAP ON 5/8" REBAR 1" ABOVE GROUND
FOUND 2 1/2" BRASS CAP ON STAINLESS STEEL POST, 2" ABOVE GROUND
FOUND 2" ALUMINUM CAP ON 5/8" REBAR 2" ABOVE GROUND
FOUND 2 1/2" BRASS CAP ON STAINLESS STEEL POST, 2" ABOVE GROUND
FOUND 2" ALUMINUM CAP ON 5/8" REBAR 1" ABOVE GROUND
FOUND 2 1/2" BRASS CAP ON STAINLESS STEEL POST, 1" ABOVE GROUND

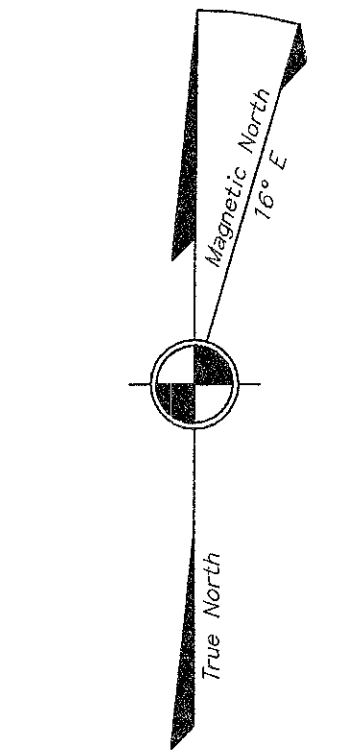
M

N

O

P

Q



MAGNETIC DECLINATION
PER USGS QUADRANGLE MAP
NUNIVAK (A-4) 1952

GOVERNMENT LOT 2 (REMAINDER)
SECTION 31
NIMA CORPORATION
(PATENT No. 50-2010-0352)

EV-3-276 Legend

Record Boundary Line
Proposed To Be Eliminated

GOVERNMENT LOT 1 (REMAINDER)
SECTION 6
NIMA CORPORATION
(PATENT No. 50-2007-0329)
NIMA CORPORATION
(PATENT No. 50-2010-0079)

TRACT 7
(PLAT 2010-16)

MEKORYUK
WIND FARM
SUBDIVISION
(PLAT 2014-1)
LOT 1

LOT 2
(PLAT 2014-1)

TRACT 9-A
(PLAT 2014-1)

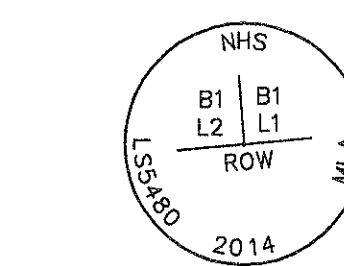
(PLAT 98-3)

TRACT 11
(PLAT 2010-16)

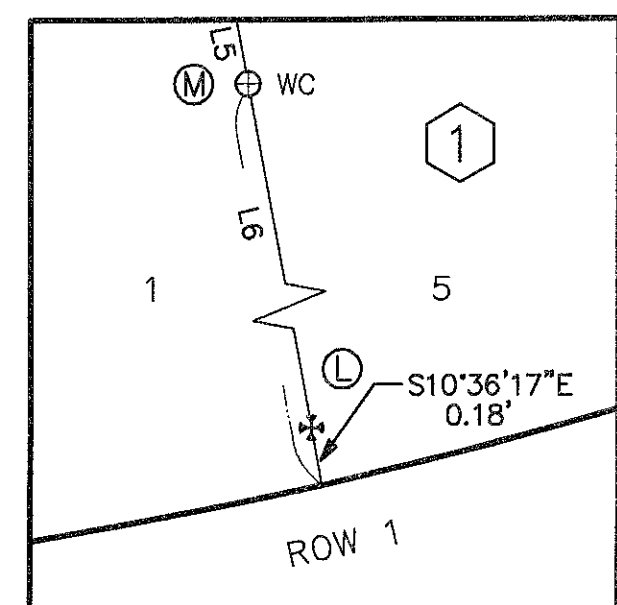
TRACT 12
(PLAT 2010-16)

LEGEND

- FOUND GLO/BLM/ANCSA 14(c) 3/4" BRASS CAP
- FOUND 2" ALUMINUM CAP ON 5/8" REBAR
- SET 2" ALUMINUM CAP ON 5/8" POINTED REBAR
- POWER POLE
- ANCHOR GUY
- CORS ANTENNA
- BLOCK NUMBER
- XX XX XX MEASURED DATA
- (XX XX XX) RECORD DATA (PLAT 2014-1)
- SURVEYED LINES
- UNSURVEYED LINES
- PROPERTY LINE VACATED BY THIS PLAT
- ABOVE GROUND UTILITOR
- OE OVERHEAD ELECTRIC
- UE UNDERGROUND ELECTRIC
- UT UNDERGROUND TELECOMMUNICATIONS
- EDGE GRAVEL ROAD
- TOWNSHIP LINE
- 20' UTILITY EASEMENT*
- 20' WIDE UTILITY EASEMENT, DEDICATED BY THIS PLAT (FOR UTILITY USE INCLUDING ELECTRICAL AND TELECOMMUNICATIONS)



ALUMINUM CAP SET THIS SURVEY
TYPICALLY MARKED



DETAIL
NOT TO SCALE

LINE	DIRECTION	LENGTH
L1	N85° 13' 04"E	138.04'
L2	N44° 01' 22"W	27.31'
L3	N44° 01' 23"E	28.02'
L4	S44° 10' 10"E	198.71'
L5	S10° 36' 17"E	42.02'
L6	S10° 36' 17"E	77.20'
L7	N73° 55' 01"E	19.82'

LINE	DIRECTION	LENGTH
L8	N16° 20' 13"W	163.5'
L9	S85° 11' 27"W	20.4'
L10	S16° 20' 13"E	265.7'
L11	N04° 48' 33"W	100.1'
L12	N16° 20' 13"W	119.1'
L13	N85° 07' 38"E	20.4'
L14	S16° 20' 13"E	17.0'
L15	N16° 20' 13"W	5.0'
L16	N73° 39' 47"E	20.0'
L17	S16° 20' 13"E	9.1'

CURVE	RADIUS	DELTA	ARC LENGTH	CHORD BEARING	CHORD LENGTH
C1	2740.22'	11° 16' 27"	539.19'	N79° 33' 06"E	538.32'
C2	2740.22'	1° 43' 05"	82.17'	S84° 19' 47"W	82.17'
C3	2740.22'	2° 53' 37"	138.39'	S82° 01' 26"W	138.37'
C4	2740.22'	2° 53' 30"	138.30'	S79° 07' 53"W	138.27'
C5	2740.22'	3° 46' 15"	180.34'	S75° 48' 01"W	180.32'

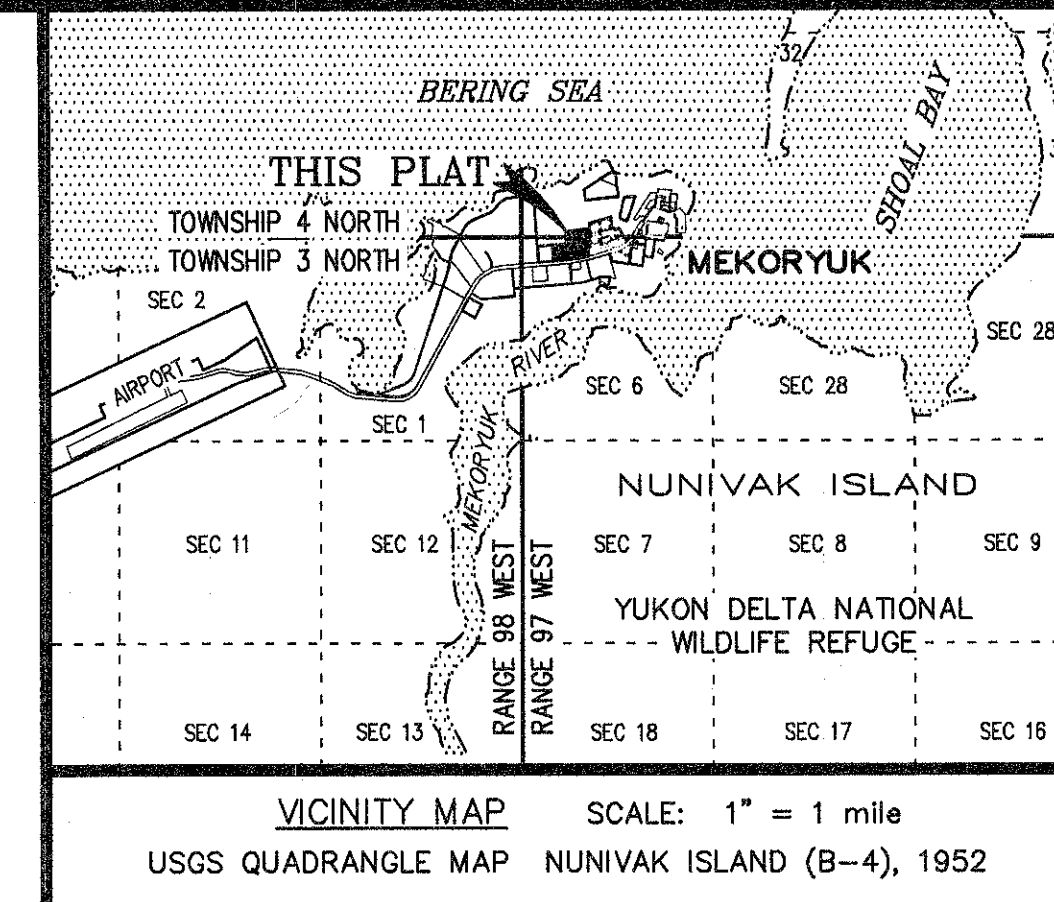
GRAPHIC SCALE



Scale in Feet
1 inch = 100 feet

NOTES

- THE ERROR OF CLOSURE OF THIS SURVEY DOES NOT EXCEED 1:5,000.
- ALL BEARINGS SHOWN ARE TRUE BEARINGS AS ORIENTED TO THE BASIS OF BEARING AND THE DISTANCES SHOWN ARE REDUCED TO HORIZONTAL FIELD DISTANCES.
- THE GEODETIC COORDINATE OF THE SOUTHWEST CORNER (MONUMENT "B") OF LOT 2, BLOCK 2, NASH HARBOR SUBDIVISION, IS 60°23'03.553" NORTH LATITUDE, 166°12'16.021" WEST LONGITUDE (NORTH AMERICAN DATUM OF 1983, NAD83). THE GEODETIC COORDINATE WAS OBTAINED FROM GPS RTK OBSERVATIONS AND SUBSEQUENT POST-PROCESSING PROGRAM, TOPCON MAGNET TOOLS (VER. 3.0.1).
- McCLINTOCK LAND ASSOCIATES PERFORMED THE FIELD SURVEY FOR THIS SUBDIVISION PLAT ON AUGUST 12 THROUGH AUGUST 14, 2014.
- THE AREA OF THE 50 FEET WIDE RIGHT-OF-WAY DEDICATED BY THIS SUBDIVISION PLAT IS 21,695 square feet (0.49 acres).
- THE 20 FEET WIDE UTILITY EASEMENT SHOWN WITHIN LOT 1, BLOCK 1, NASH HARBOR SUBDIVISION WAS GRANTED FROM NIMA CORPORATION TO THE CITY OF MEKORYUK BY DOCUMENT No. 2012-001638-0 (CAPE NOME RECORDING DISTRICT). THIS EASEMENT IS FOR THE CONSTRUCTION, OPERATION, MAINTENANCE, AND IMPROVEMENT OF A WATERLINE FOR MEKORYUK WATER SOURCE.
- THIS PLAT IS SUBJECT TO RESERVATIONS AND EXCEPTIONS AS CONTAINED IN UNITED STATES PATENT No. 50-2007-0329 (RECORDED AS DOCUMENT No. 2007-001645-0, CAPE NOME RECORDING DISTRICT, ON SEPTEMBER 17, 2007) AND UNITED STATES PATENT No. 50-2010-0352 (RECORDED AS DOCUMENT No. 2010-000245-0, CAPE NOME RECORDING DISTRICT, ON MARCH 31, 2016).
- THIS PLAT IS SUBJECT TO ANY RESTRICTIONS OR COVENANTS AS NOTED ON PLAT No. 2010-16 AND PLAT No. 2014-1.
- THIS VACATION/REPLAT IS IN COMPLIANCE WITH STATE PLATTING RESOLUTION No. 2017-XX APPROVED XXXX XX, 2017, EV-X-XXX AND AS 29.40.120-140.



CERTIFICATE OF OWNERSHIP AND DEDICATION

WE, THE UNDERSIGNED, HEREBY CERTIFY THAT NIMA CORPORATION AND THE CITY OF MEKORYUK ARE THE OWNERS OF NASH HARBOR SUBDIVISION, AS SHOWN ON THIS PLAT, ON BEHALF OF NIMA CORPORATION AND THE CITY OF MEKORYUK. WE APPROVE THIS SURVEY AND PLAT AND DEDICATE OR RESERVE FOR PUBLIC OR PRIVATE USE, AS NOTED, ALL EASEMENTS, PUBLIC UTILITY AREAS, AND RIGHTS-OF-WAY AS SHOWN AND DESCRIBED ON THIS PLAT.

OWNER

WAYNE W. DON, CHAIRMAN
NIMA CORPORATION
236 WEST 10th AVENUE, SUITE 100
ANCHORAGE, ALASKA 99501

NOTARY'S ACKNOWLEDGEMENT

SUBSCRIBED AND SWORN TO BEFORE ME THIS _____ DAY OF _____
BY _____
PERSONALLY APPEARING BEFORE ME.

NOTARY FOR THE STATE OF ALASKA

MY COMMISSION EXPIRES: _____

OWNER

DEBBIE DAVID, MAYOR
CITY OF MEKORYUK
P.O. BOX 29
MEKORYUK, ALASKA 99630

NOTARY'S ACKNOWLEDGEMENT

SUBSCRIBED AND SWORN TO BEFORE ME THIS _____ DAY OF _____
BY _____
PERSONALLY APPEARING BEFORE ME.

NOTARY FOR THE STATE OF ALASKA

MY COMMISSION EXPIRES: _____

PLAT APPROVAL

THIS PLAT IS APPROVED BY THE COMMISSIONER OF THE DEPARTMENT OF NATURAL RESOURCES, OR THE COMMISSIONER'S DESIGNEE, IN ACCORDANCE WITH ALASKA STATUTE 40.15.

COMMISSIONER

DATE

TAX CERTIFICATE

THIS SUBDIVISION LIES OUTSIDE OF ANY TAXING AUTHORITY, AT THE TIME OF FILING.

A PLAT OF NASH HARBOR SUBDIVISION	
CREATING LOTS 1 thru 5, BLOCK 1 and LOTS 1 thru 3, BLOCK 2	
A SUBDIVISION AND REPLAT OF TRACT 5-A and TRACT 10-A MEKORYUK WIND FARM SUBDIVISION (PLAT No. 2014-1) LOCATED WITHIN SECTION 6, TOWNSHIP 3 NORTH, RANGE 97 WEST and SECTION 31, TOWNSHIP 4 NORTH, RANGE 97 WEST SEWARD MERIDIAN, ALASKA CONTAINING 15.77 ACRES, MORE OR LESS CAPE NOME RECORDING DISTRICT	
PREPARED BY: McCLINTOCK LAND ASSOCIATES, INC. 16942 NORTH EAGLE RIVER LOOP ROAD EAGLE RIVER, ALASKA 99577 (907) 694-4499 LICENSE No. AECC596	PREPARED FOR: NIMA CORPORATION 236 WEST 10th AVENUE, SUITE 100 ANCHORAGE, ALASKA 99501 (907) 563-1566
SCALE: 1"=100' CHK: BM JOB: 13-238 DWG: PL13-238 SHEET: 1 of 1 DATE DRAWN: MAR 01, 2017 DATE OF SURVEY: AUG 12, 2014 DISK: J-DRIVE GRID: MEKORYUK DWN: SKS FB No: 469-54 ADNR No: PA2017XXXX/EV-X-XXX	