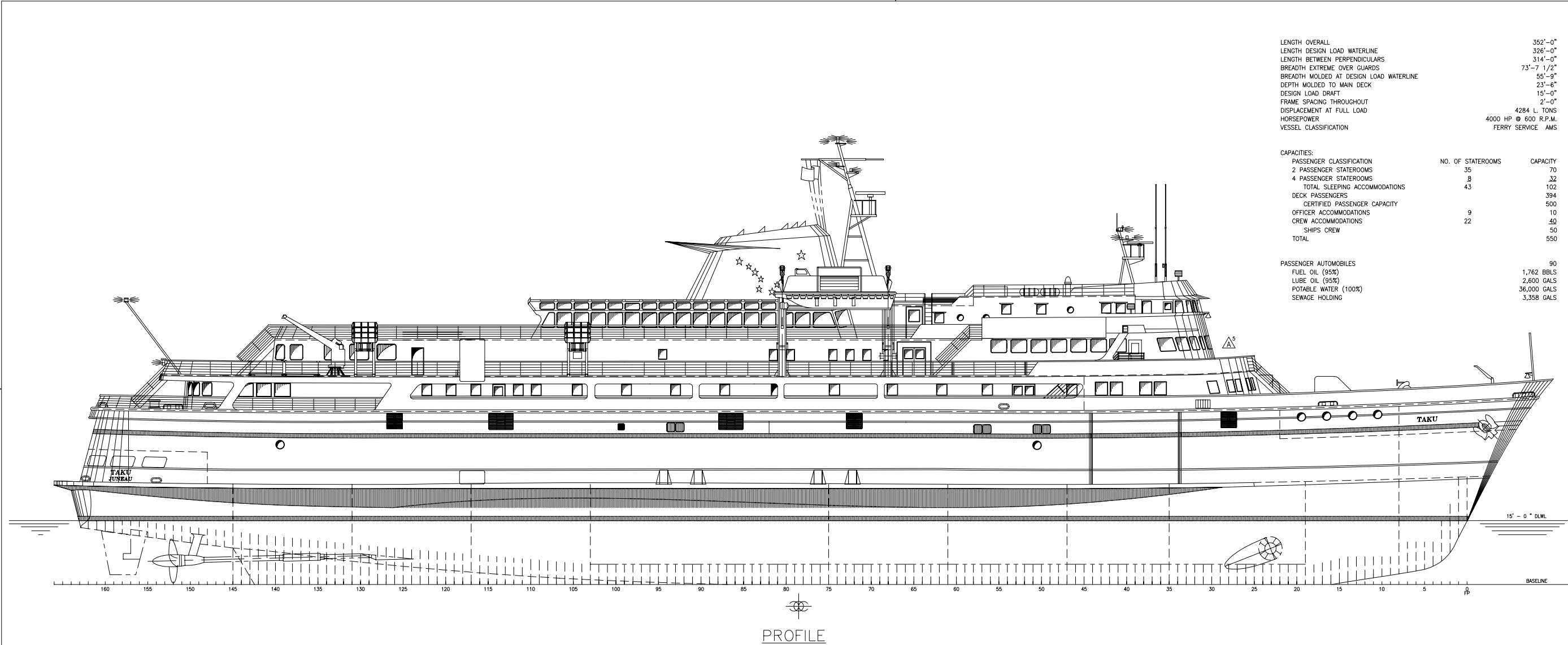


SEALED BID SALE #2517S070  
ATTACHMENT #3



PROFILE

LENGTH OVERALL	352'-0"
LENGTH DESIGN LOAD WATERLINE	326'-0"
LENGTH BETWEEN PERPENDICULARS	314'-0"
BREADTH EXTREME OVER GUARDS	73'-7 1/2"
BREADTH MOLDED AT DESIGN LOAD WATERLINE	55'-0"
DEPTH MOLDED TO MAIN DECK	23'-6"
DESIGN LOAD DRAFT	15'-0"
FRAME SPACING THROUGHOUT	2'-0"
DISPLACEMENT AT FULL LOAD	4284 L. TONS
HORSEPOWER	4000 HP @ 600 R.P.M.
VESSEL CLASSIFICATION	FERRY SERVICE AMS

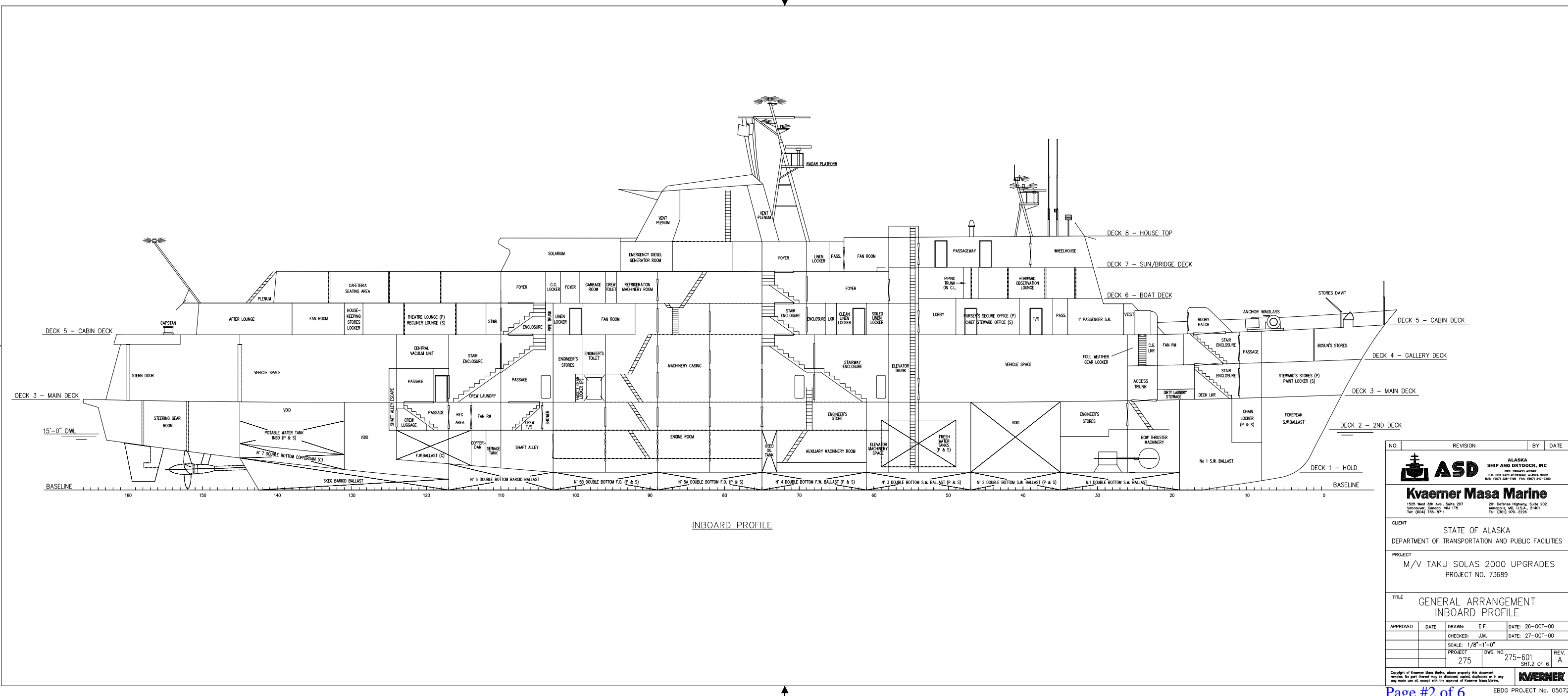
  

CAPACITIES:		
PASSENGER CLASSIFICATION	NO. OF STATEROOMS	CAPACITY
2 PASSENGER STATEROOMS	35	70
4 PASSENGER STATEROOMS	8	32
TOTAL SLEEPING ACCOMMODATIONS	43	102
DECK PASSENGERS		394
CERTIFIED PASSENGER CAPACITY		500
OFFICER ACCOMMODATIONS	9	10
CREW ACCOMMODATIONS	22	40
SHIPS CREW		50
TOTAL		550

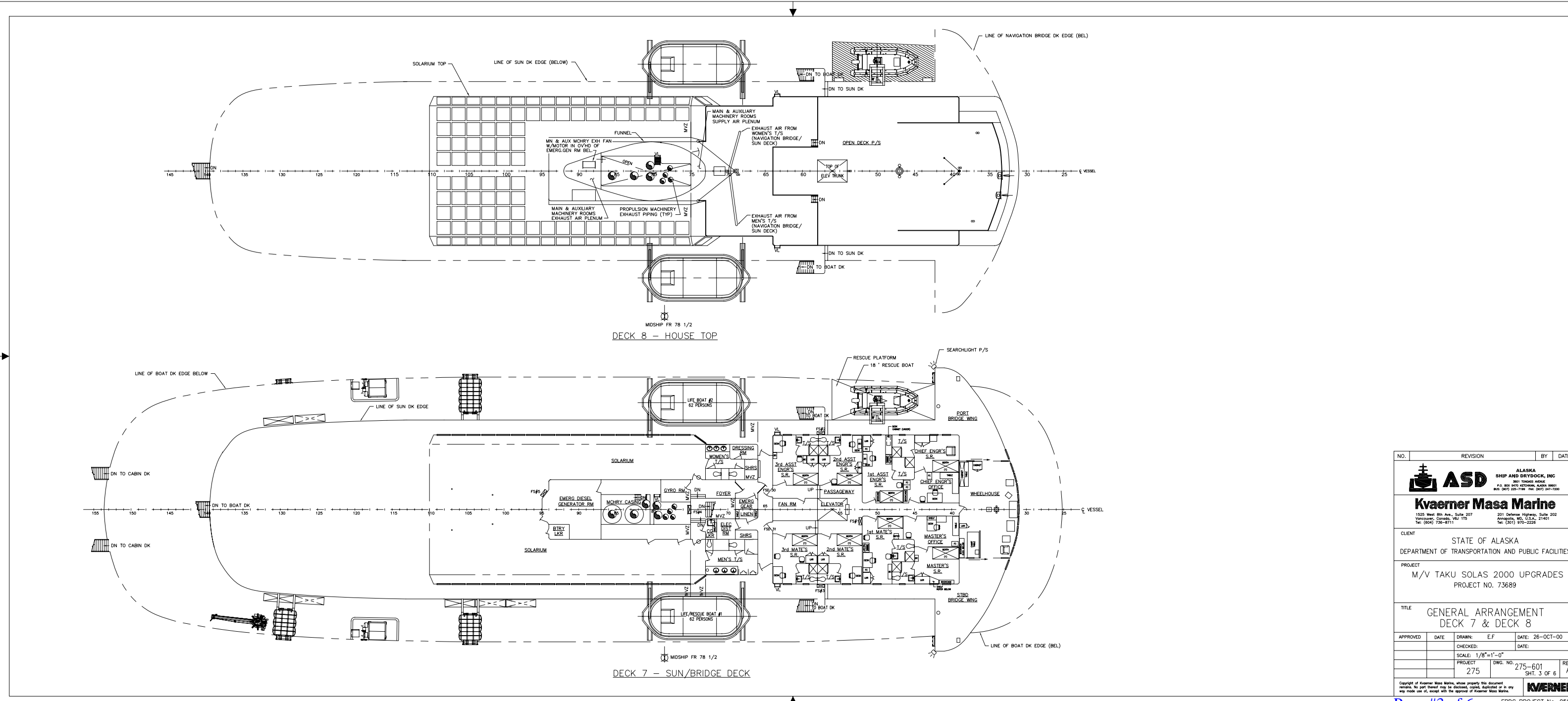
  

PASSENGER AUTOMOBILES	90
FUEL OIL (95%)	1,762 BBLs
LUBE OIL (95%)	2,600 GALS
POTABLE WATER (100%)	36,000 GALS
SEWAGE HOLDING	3,358 GALS

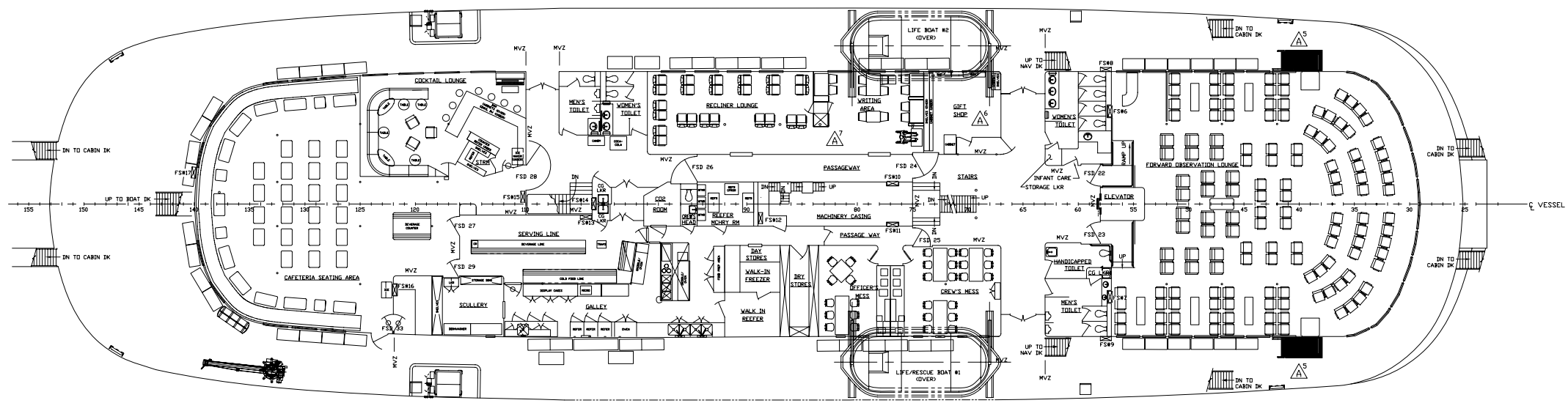
<ol style="list-style-type: none"> <li>CHANGED SR#4 TO OFFICER STATEROOM.</li> <li>ADDED CAPSTANS P/S ON CABIN DECK FR 55.</li> <li>ADDED EMER GEAR LOCKER AND LINEN LOCKER IN CABIN DECK TV LOUNGE. REVISED SEATING ARRANGEMENT.</li> <li>REVISED LOCKERS AND SEATING IN CABIN DECK RECLINER LOUNGE.</li> <li>ADDED EMERGENCY ESCAPE DOORS/PLATFORMS IN BOAT DECK OBSERVATION LOUNGE (P/S).</li> <li>RENAMED SHIP STORES TO GIFT SHOP ON BOAT DECK FR 70 (P).</li> <li>REVISED BOAT DECK RECLINER LOUNGE/WRITING AREA.</li> </ol>		EBDG/JKE	7/10/07
NO.	REVISION	BY	DATE
		ALASKA SHIP AND DRYDOCK, INC. 3601 THORSSEN AVENUE P.O. BOX 8420 HELENOWA, ALASKA 99601 TEL: (907) 225-7199 FAX: (907) 247-7200	
		Kvaerner Masa Marine 1525 West 8th Ave., Suite 207 Vancouver, Canada, V6J 1T5 Tel: (604) 736-8711	
CLIENT	STATE OF ALASKA		
DEPARTMENT OF TRANSPORTATION AND PUBLIC FACILITIES			
PROJECT	M/V TAKU SOLAS 2000 UPGRADES PROJECT NO. 73689		
TITLE	GENERAL ARRANGEMENT PROFILE		
APPROVED	DATE	DRAWN: E.F.	DATE: 26-OCT-00
		CHECKED: J.M.	DATE: 27-OCT-00
SCALE: 1/8"=1'-0"			
PROJECT	DWG. NO.	275-601	REV. A
275			SHT. 1 OF 6
Copyright of Kvaerner Masa Marine, whose property this document remains. No part thereof may be disclosed, copied, duplicated or in any way made use of, except with the approval of Kvaerner Masa Marine.			



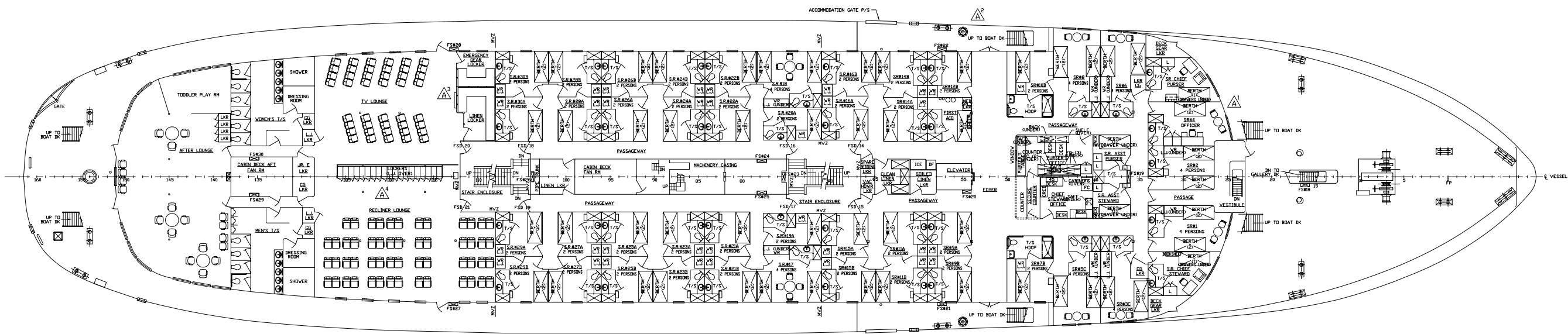
NO.	REVISION	BY	DATE
<b>Kvaerner Masa Marine</b> <small>1525 West 8th Ave., Suite 207 Vancouver, Canada, V6J 1T5 Tel: (604) 736-8711</small>			
<small>380 THOUSAND AVENUE ANNAPOLIS, MD, U.S.A. 21401 Tel: (301) 970-2226</small>			
<b>CLIENT</b> STATE OF ALASKA DEPARTMENT OF TRANSPORTATION AND PUBLIC FACILITIES			
<b>PROJECT</b> M/V TAKU SOLAS 2000 UPGRADES PROJECT NO. 73689			
<b>TITLE</b> GENERAL ARRANGEMENT INBOARD PROFILE			
APPROVED	DATE	DRAWN: E.F.	DATE: 26-OCT-00
		CHECKED: J.M.	DATE: 27-OCT-00
		SCALE: 1/8"=1'-0"	
		PROJECT: 275	DWG. NO.: 275-601
		SHT.2 OF 6	
		REV. A	
<small>Copyright of Kvaerner Masa Marine, whose property this document remains. No part thereof may be disclosed, copied, duplicated or in any way made use of, except with the approval of Kvaerner Masa Marine.</small>			




NO.	REVISION	BY	DATE
<b>Kvaerner Masa Marine</b> <small>1525 West 8th Ave. Suite 207 Anchorage, Alaska 99501            Tel: (907) 255-7199 Fax: (907) 247-7200</small>			
CLIENT		STATE OF ALASKA DEPARTMENT OF TRANSPORTATION AND PUBLIC FACILITIES	
PROJECT		M/V TAKU SOLAS 2000 UPGRADES PROJECT NO. 73689	
TITLE		GENERAL ARRANGEMENT DECK 7 & DECK 8	
APPROVED	DATE	DRAWN: E.F.	DATE: 26-OCT-00
		CHECKED:	DATE:
		PROJECT	SCALE: 1/8"=1'-0"
		275	DWG. NO. 275-601
			SHT. 3 OF 6
			REV. A



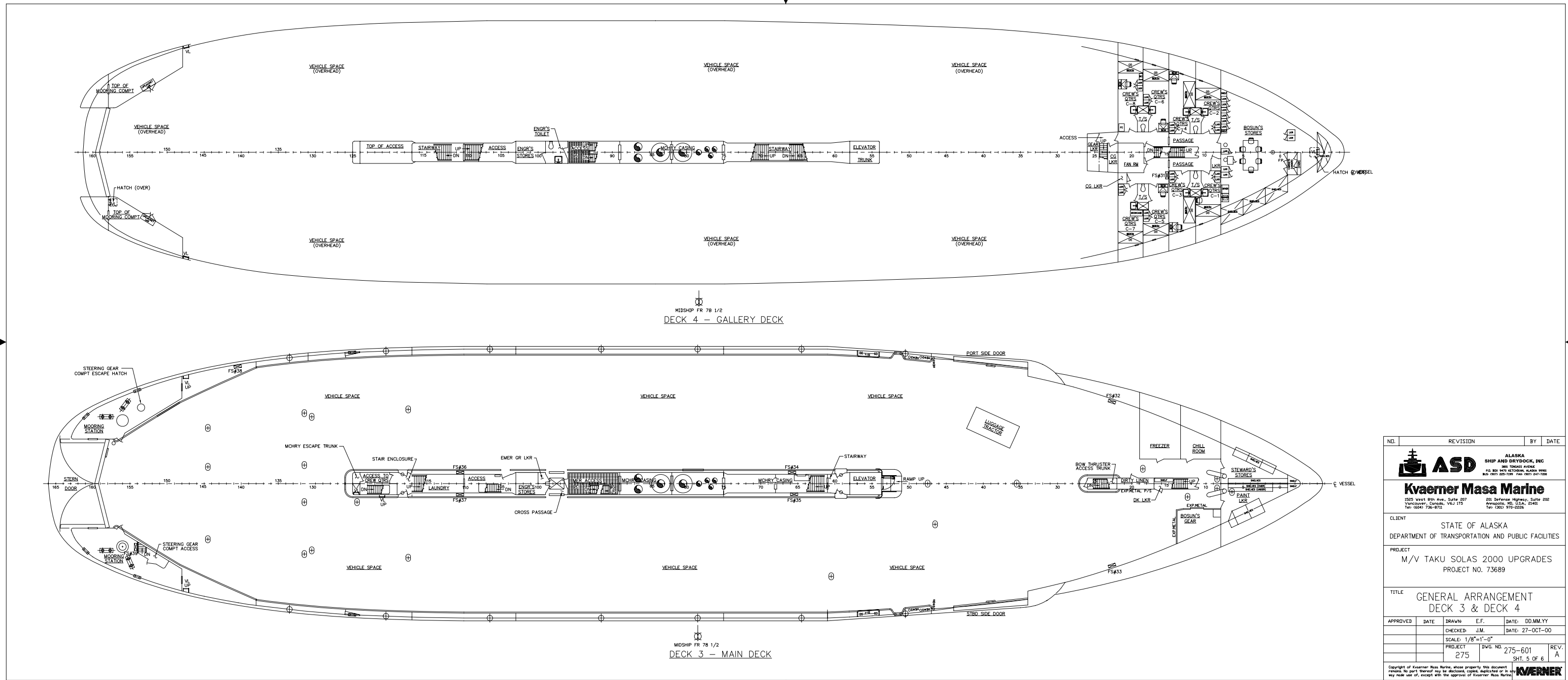
MIDSHIP FR 78 1/2  
DECK 6 - BOAT DECK



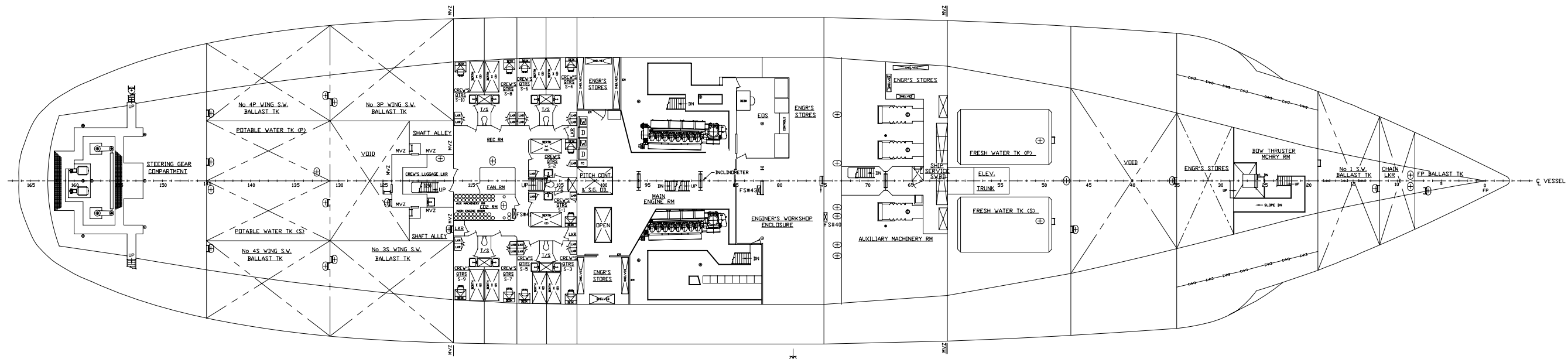
MIDSHIP FR 78 1/2  
DECK 5 - CABIN DECK

NO.	REVISION	BY	DATE
 <b>Kvaerner Masa Marine</b> <small>2505 West 89th Ave., Suite 1007 Anchorage, AK 99502          251 Defense Highway, Suite 202 Annapolis, MD, U.S.A. 21401          Tel: (907) 736-8721 Tel: (410) 970-2226</small>			
CLIENT		STATE OF ALASKA DEPARTMENT OF TRANSPORTATION AND PUBLIC FACILITIES	
PROJECT		M/V TAKU SOLAS 2000 UPGRADES PROJECT NO. 73689	
TITLE		GENERAL ARRANGEMENT DECK 5 & DECK 6	
APPROVED	DATE	DRAWN	E.F. DATE: 26-OCT-00
		CHECKED	J.M. DATE: J.M.
		SCALE	1/8"=1'-0"
		PROJECT	275
		DWG. NO.	275-601
		REV.	SHT. 4 OF 6 A

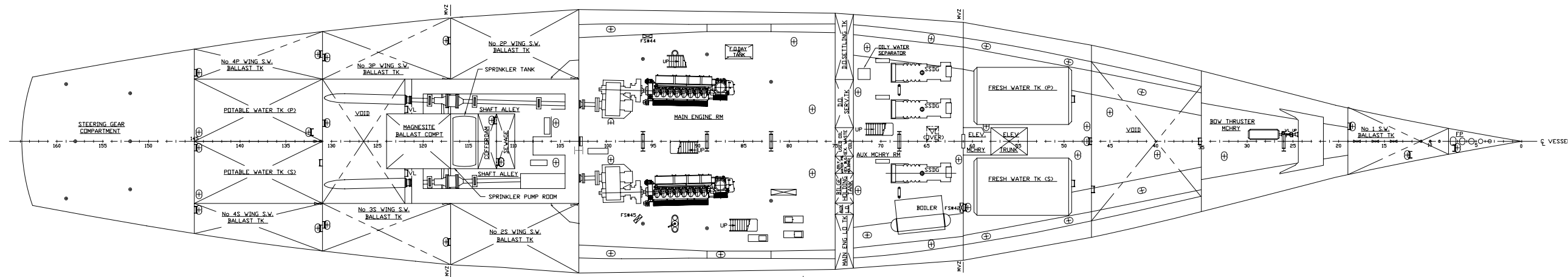
Copyright of Kvaerner Masa Marine, whose property this document remains. No part thereof may be distributed, copied, modified or in any way made use of, except with the approval of Kvaerner Masa Marine.



NO.	REVISION	BY	DATE
<b>Kvaerner Masa Marine</b>			
<small>2505 West 89th Ave., Suite 1007 Vancouver, Canada, V6L 1T5 Tel: (604) 736-8722</small>		<small>251 Defense Highway, Suite 202 Annapolis, MD, U.S.A., 21401 Tel: (301) 970-2226</small>	
CLIENT	STATE OF ALASKA DEPARTMENT OF TRANSPORTATION AND PUBLIC FACILITIES		
PROJECT	M/V TAKU SOLAS 2000 UPGRADES PROJECT NO. 73689		
TITLE	GENERAL ARRANGEMENT DECK 3 & DECK 4		
APPROVED	DATE	DRAWN	E.F.
		CHECKED	J.M.
		SCALE	1/8"=1'-0"
		PROJECT	275
		DWG. NO.	275-601
		SHT.	5 OF 6
		REV.	A



MIDSHIP FR 78 1/2  
DECK 2 - SECOND DECK



MIDSHIP FR 78 1/2  
DECK 1 - HOLD

NO.	REVISION	BY	DATE
<b>Kvaerner Masa Marine</b> <small>2505 West 89th Avenue, Suite 1057 Anchorage, Alaska 99506            251 Defense Highway, Suite 202 Anchorage, Alaska 99506            Tel: (907) 736-8721 Fax: (907) 243-7028</small>			
CLIENT		STATE OF ALASKA DEPARTMENT OF TRANSPORTATION AND PUBLIC FACILITIES	
PROJECT		M/V TAKU SOLAS 2000 UPGRADES PROJECT NO. 73689	
TITLE GENERAL ARRANGEMENT DECK 1 & DECK 2			
APPROVED	DATE	DRAWN	E.F. DATE: 26-OCT-00
		CHECKED	J.M. DATE: 27-OCT-00
		PROJECT	275
		DWG. NO.	275-601
		SHT.	6 OF 6
		REV.	A