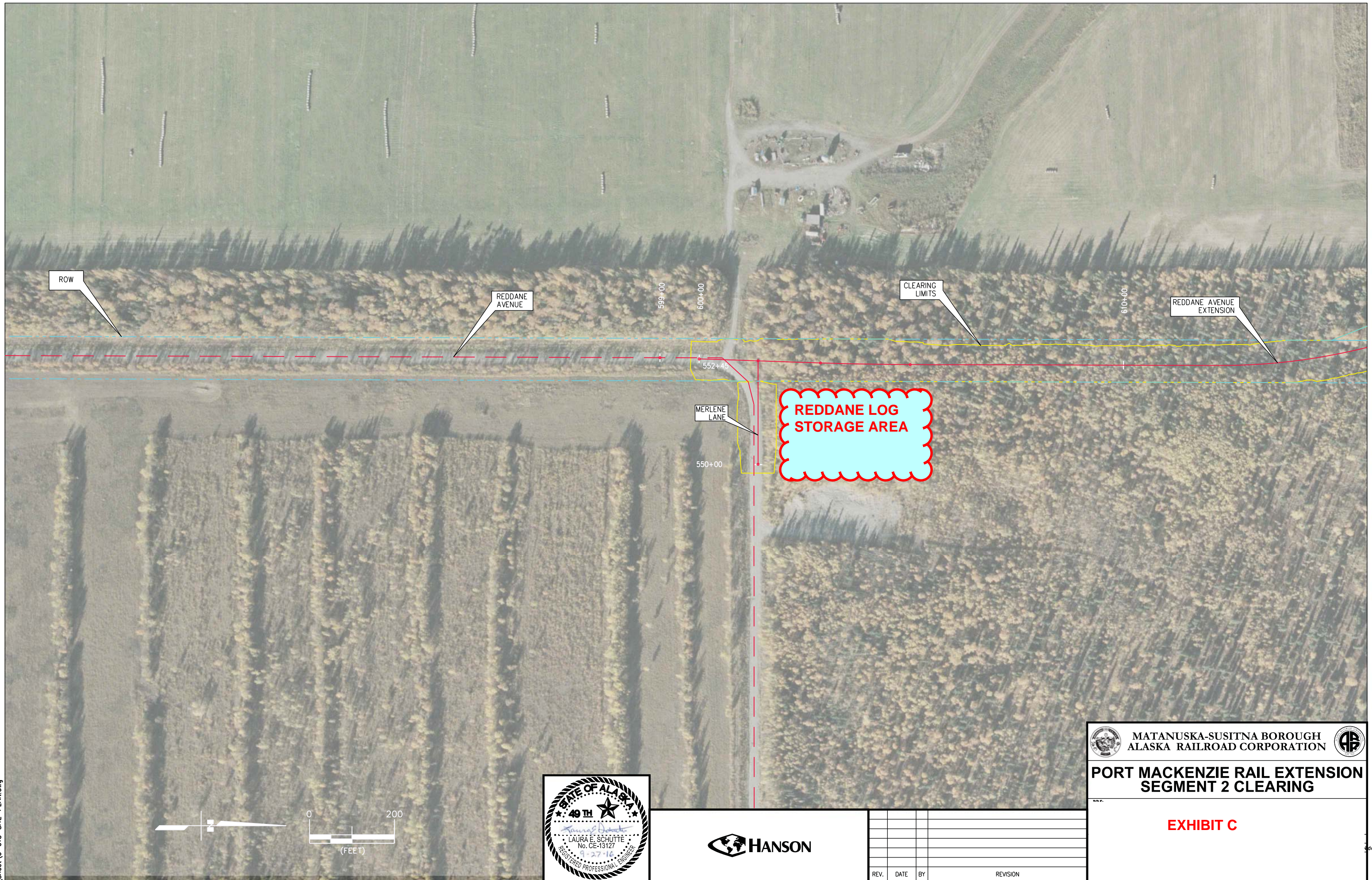


9/27/2016 ARRC-STD\_SEC2\_ClearingOnly.tbl  
... \Sheet\C-015-SITE-PLAN.dwg



REV.	DATE	BY	REVISION

	<b>MATANUSKA-SUSITNA BOROUGH ALASKA RAILROAD CORPORATION</b>	
<b>PORT MACKENZIE RAIL EXTENSION SEGMENT 2 CLEARING</b>		
<b>EXHIBIT C</b>		