

BEGIN PROJECT
 STA 2389+00

C ALIGNMENT

CLEARING
 LIMITS

ROW

2389+00

2390+00

2400+00

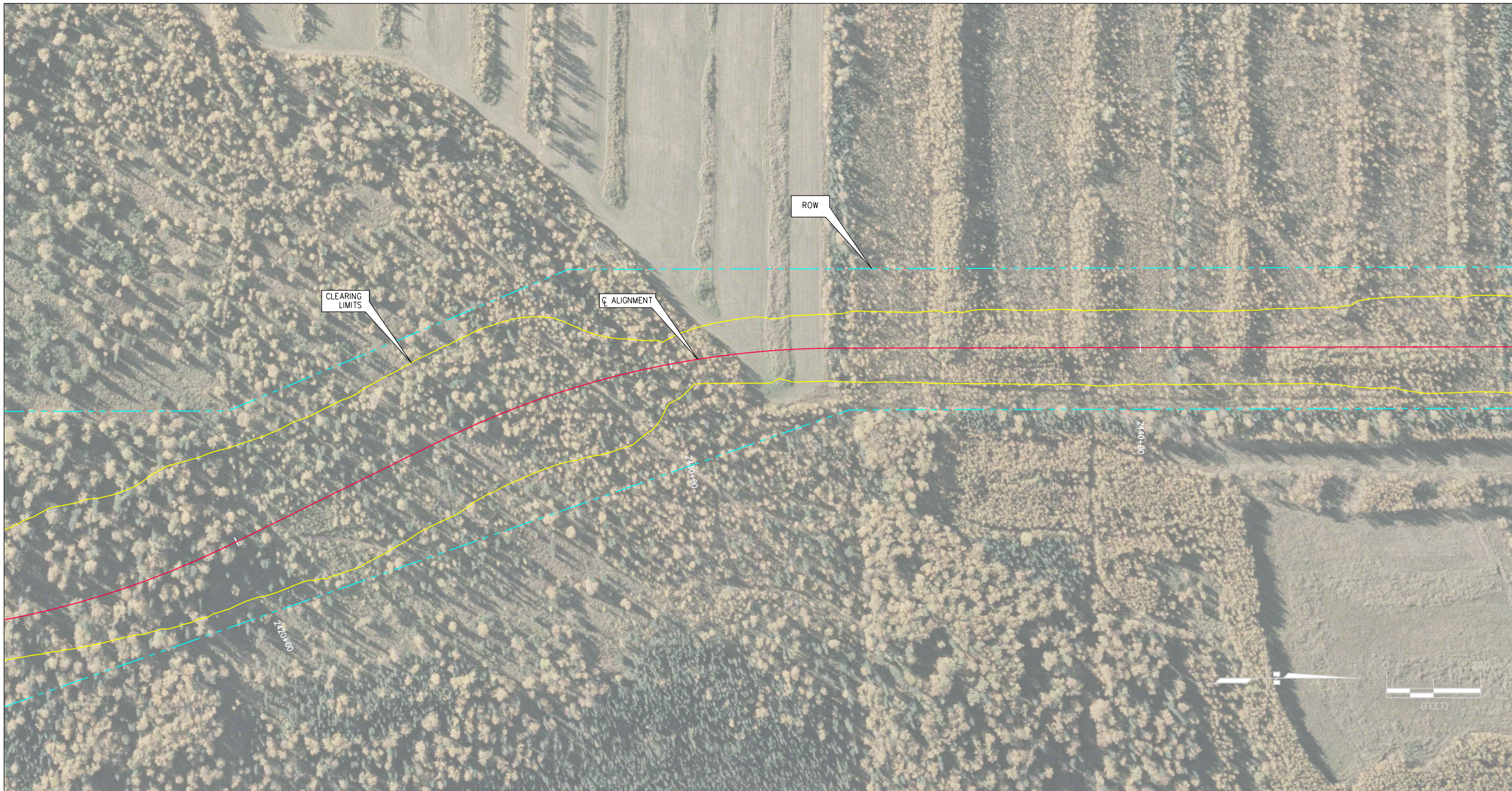
2410+00



REV.	DATE	BY	REVISION

		MATANUSKA-SUSITNA BOROUGH ALASKA RAILROAD CORPORATION	
PORT MACKENZIE RAIL EXTENSION SEGMENT 2 CLEARING			
CLEARING INDEX			
DESIGNED BY:	LES	SCALE: AS SHOWN	G4 <small>ACAD FILE: C-003-SITE-PLAN.dwg DWG NO. 001 OF 014</small>
DRAWN BY:	MAH	DATE: 9/27/2016	
CHECKED BY:	LES		
APPROVED BY:			

9/27/2016 ARRC-STD_SEC2_ClearingOnly.tbl
 ... \Sheet\C-004-SITE-PLAN.dwg



CLEARING LIMITS

CL ALIGNMENT

ROW

2+20+00

2+30+00

2+40+00



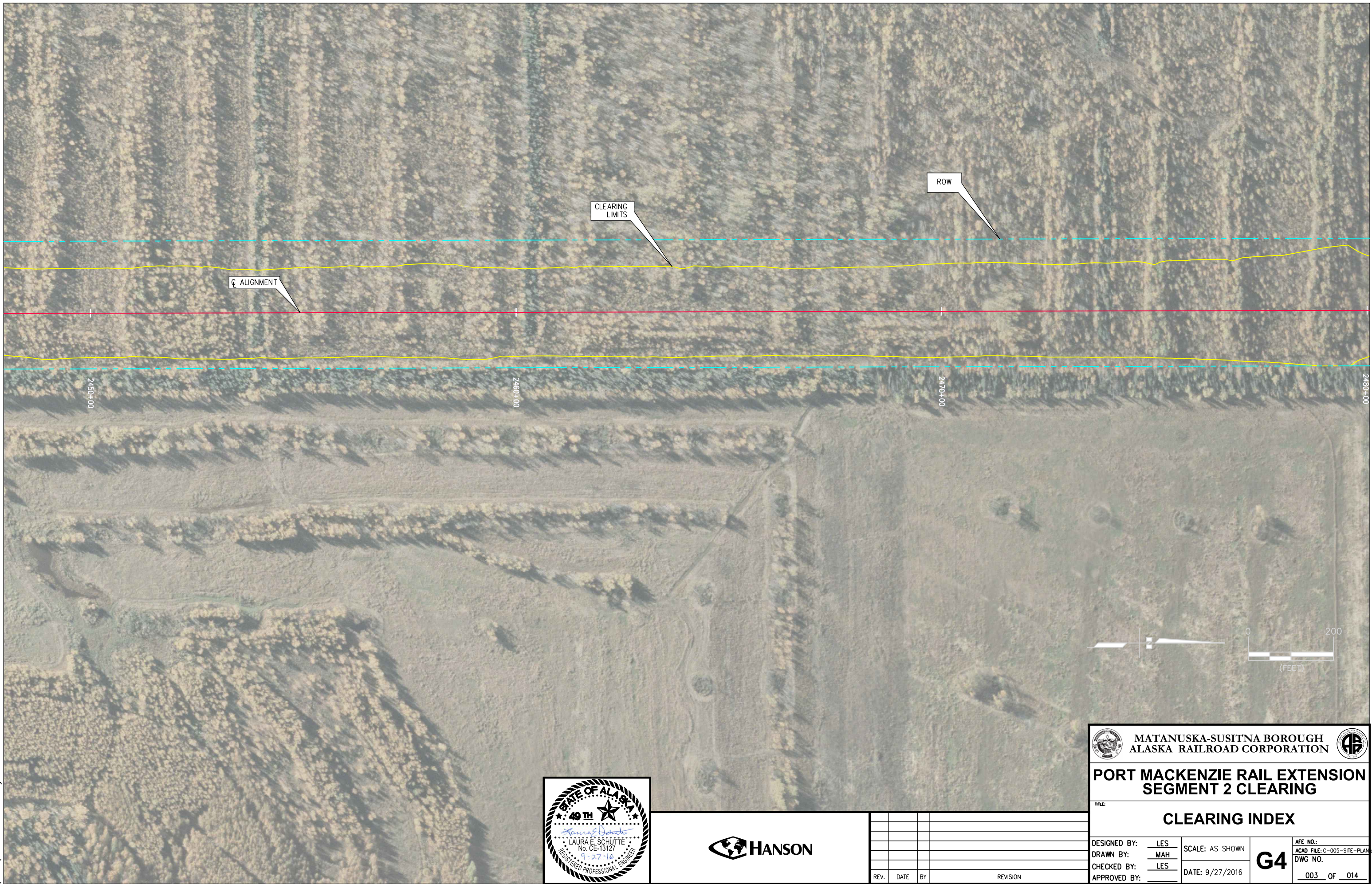
REV.	DATE	BY	REVISION

MATANUSKA-SUSITNA BOROUGH
 ALASKA RAILROAD CORPORATION

**PORT MACKENZIE RAIL EXTENSION
 SEGMENT 2 CLEARING**

TITLE: CLEARING INDEX			
DESIGNED BY: LES	SCALE: AS SHOWN	G4	A/E NO.:
DRAWN BY: MAH	DATE: 9/27/2016		ACAD FILE: C-004-SITE-PLAN.dwg
CHECKED BY: LES			DWG NO.:
APPROVED BY:			002 OF 014

9/27/2016 ARRC-STD_SEC2_ClearingOnly.tbl
 ... \Sheet\C-005-SITE-PLAN.dwg



☐ ALIGNMENT

☐ CLEARING LIMITS

☐ ROW

2450+00

2460+00

2470+00

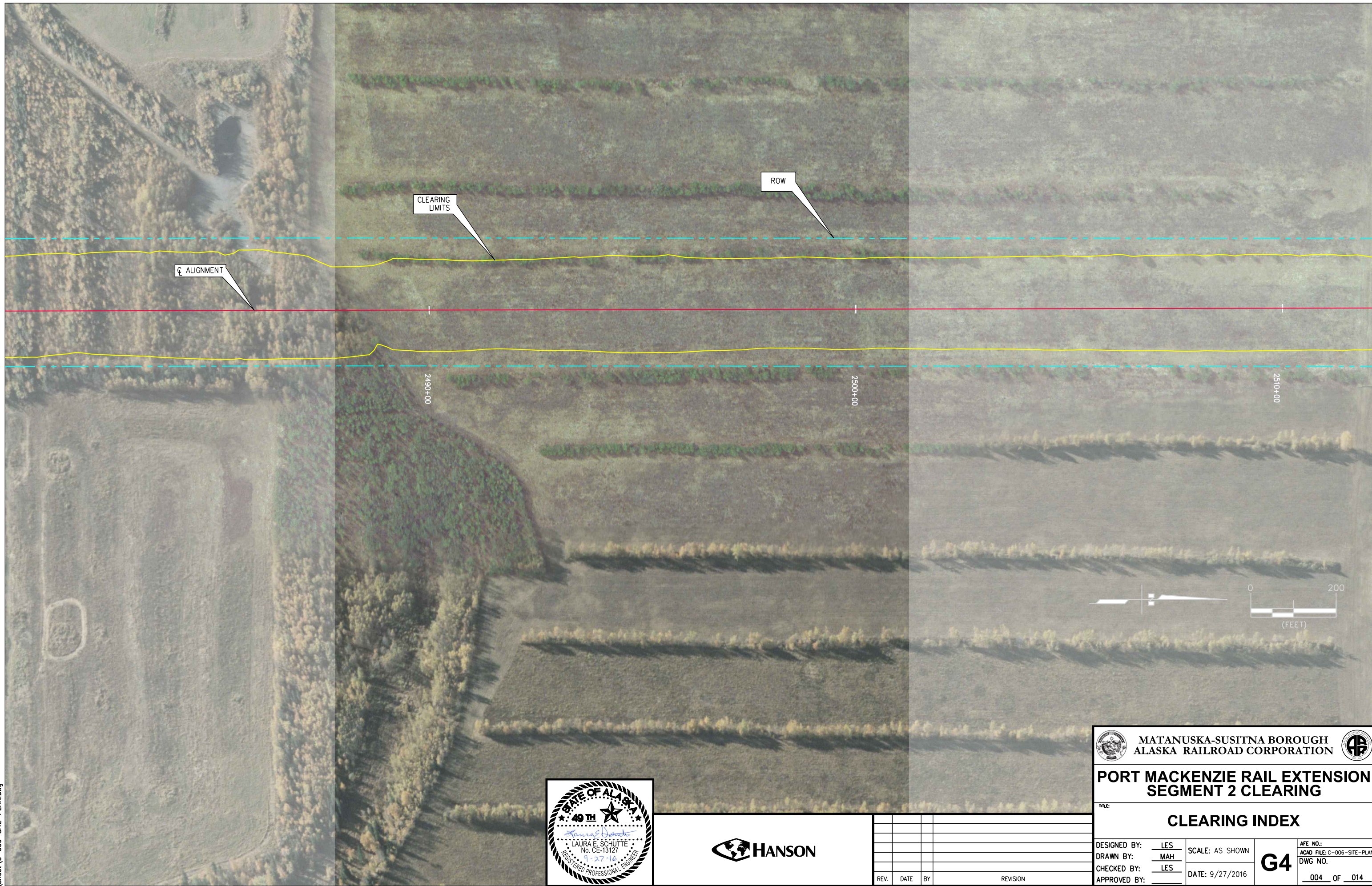
2480+00



REV.	DATE	BY	REVISION

MATANUSKA-SUSITNA BOROUGH ALASKA RAILROAD CORPORATION	
PORT MACKENZIE RAIL EXTENSION SEGMENT 2 CLEARING	
TITLE:	
CLEARING INDEX	
DESIGNED BY: LES	SCALE: AS SHOWN
DRAWN BY: MAH	DATE: 9/27/2016
CHECKED BY: LES	
APPROVED BY:	G4
AFE NO.: ACAD FILE: C-005-SITE-PLAN.dwg DWG NO.	
003 OF 014	

9/27/2016 ARRC-STD_SEC2_ClearingOnly.tbl
 ... \Sheet\C-006-SITE-PLAN.dwg



☐ ALIGNMENT

☐ CLEARING LIMITS

☐ ROW

2490+00

2500+00

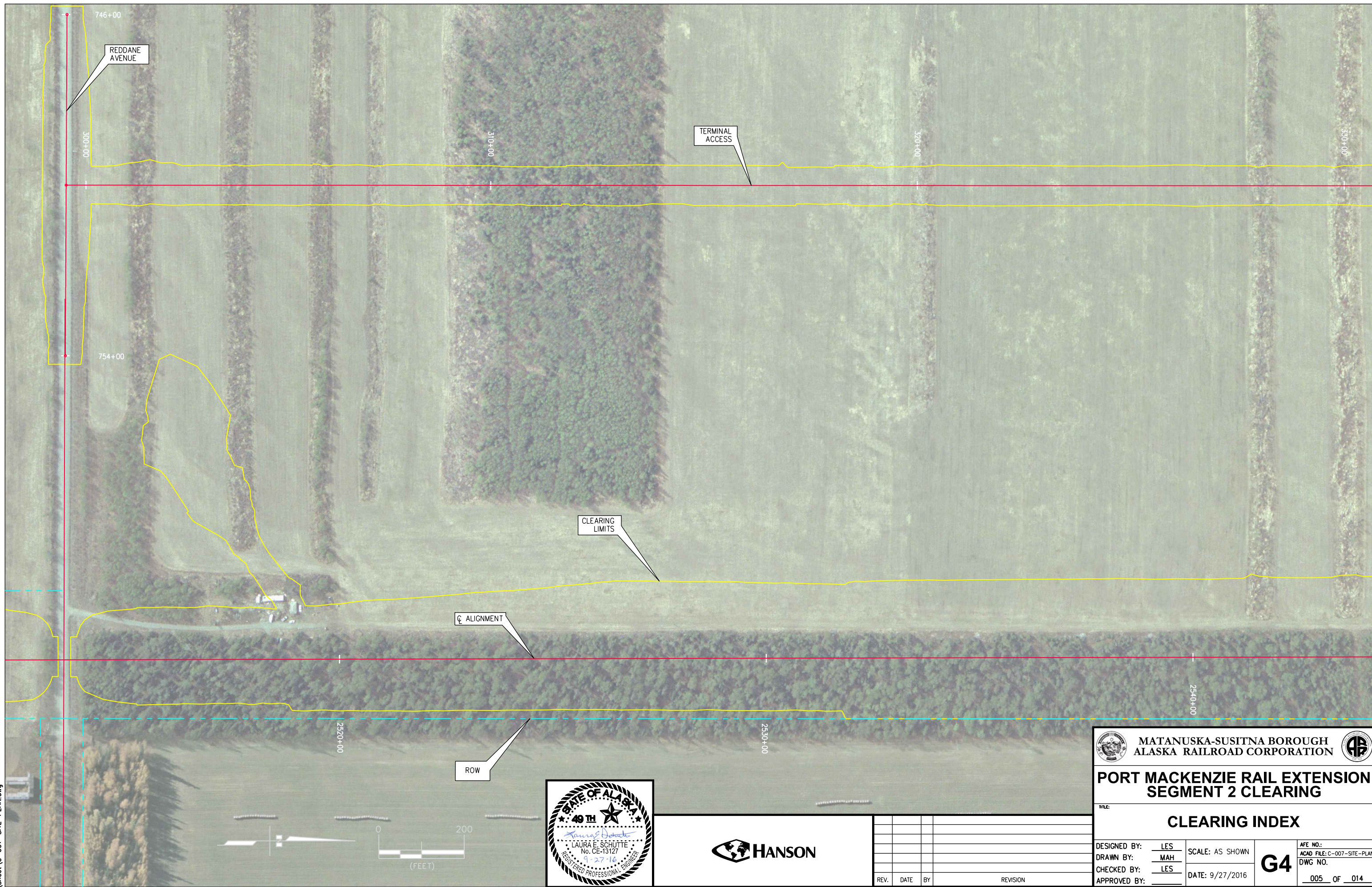
2510+00



REV.	DATE	BY	REVISION

PORT MACKENZIE RAIL EXTENSION SEGMENT 2 CLEARING	
CLEARING INDEX	
DESIGNED BY: LES	SCALE: AS SHOWN
DRAWN BY: MAH	G4
CHECKED BY: LES	
APPROVED BY: _____	DATE: 9/27/2016
ACAD FILE: C-006-SITE-PLAN.dwg DWG NO. 004 OF 014	

9/27/2016 ARRC-STD_SEC2_ClearingOnly.tbl
 ... \Sheet\C-007-SITE-PLAN.dwg



REV.	DATE	BY	REVISION

MATANUSKA-SUSITNA BOROUGH ALASKA RAILROAD CORPORATION		
PORT MACKENZIE RAIL EXTENSION SEGMENT 2 CLEARING		
CLEARING INDEX		
DESIGNED BY: <u>LES</u>	SCALE: AS SHOWN	G4 <small>ACAD FILE: C-007-SITE-PLAN.dwg DWG NO. 005 OF 014</small>
DRAWN BY: <u>MAH</u>	DATE: 9/27/2016	
CHECKED BY: <u>LES</u>		
APPROVED BY: _____		

9/27/2016 ARRC-STD_SEC2_ClearingOnly.tbl
... \Sheet\C-008-SITE-PLAN.dwg



CLEARING LIMITS

TERMINAL ACCESS

ALIGNMENT

ROW

2550+00

340+00

350+00



360+00

2560+00

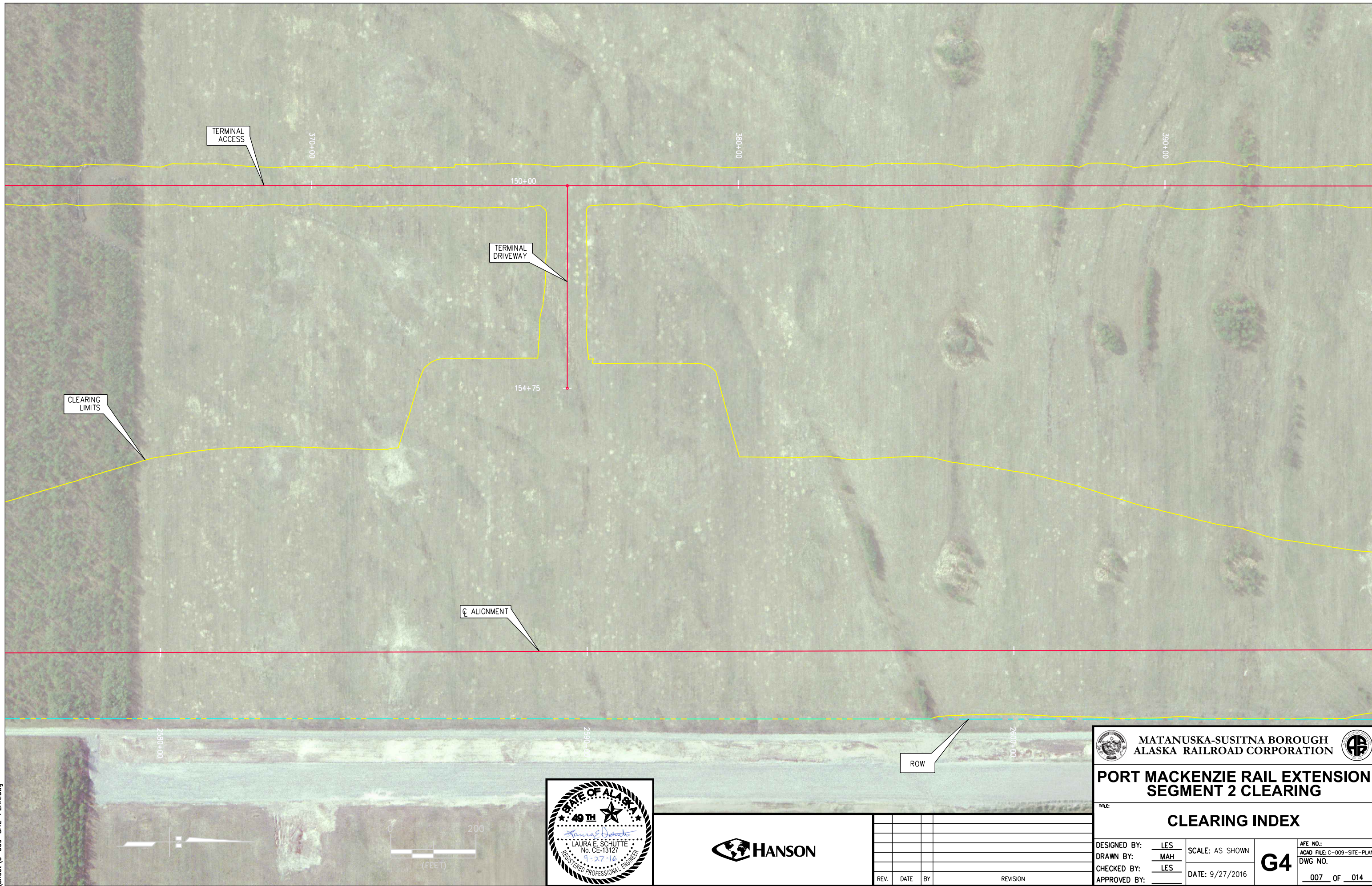
2570+00



REV.	DATE	BY	REVISION

 MATANUSKA-SUSITNA BOROUGH ALASKA RAILROAD CORPORATION		
PORT MACKENZIE RAIL EXTENSION SEGMENT 2 CLEARING		
CLEARING INDEX		
DESIGNED BY: LES	SCALE: AS SHOWN	G4 <small>ACAD FILE: C-008-SITE-PLAN.dwg DWG NO. 006 OF 014</small>
DRAWN BY: MAH	DATE: 9/27/2016	
CHECKED BY: LES		
APPROVED BY:		

9/27/2016 ARRC-STD_SEC2_ClearingOnly.tbl
 ... \Sheet\C-009-SITE-PLAN.dwg



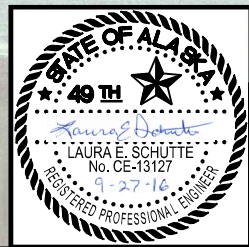
CLEARING LIMITS

TERMINAL ACCESS

TERMINAL DRIVEWAY

C ALIGNMENT

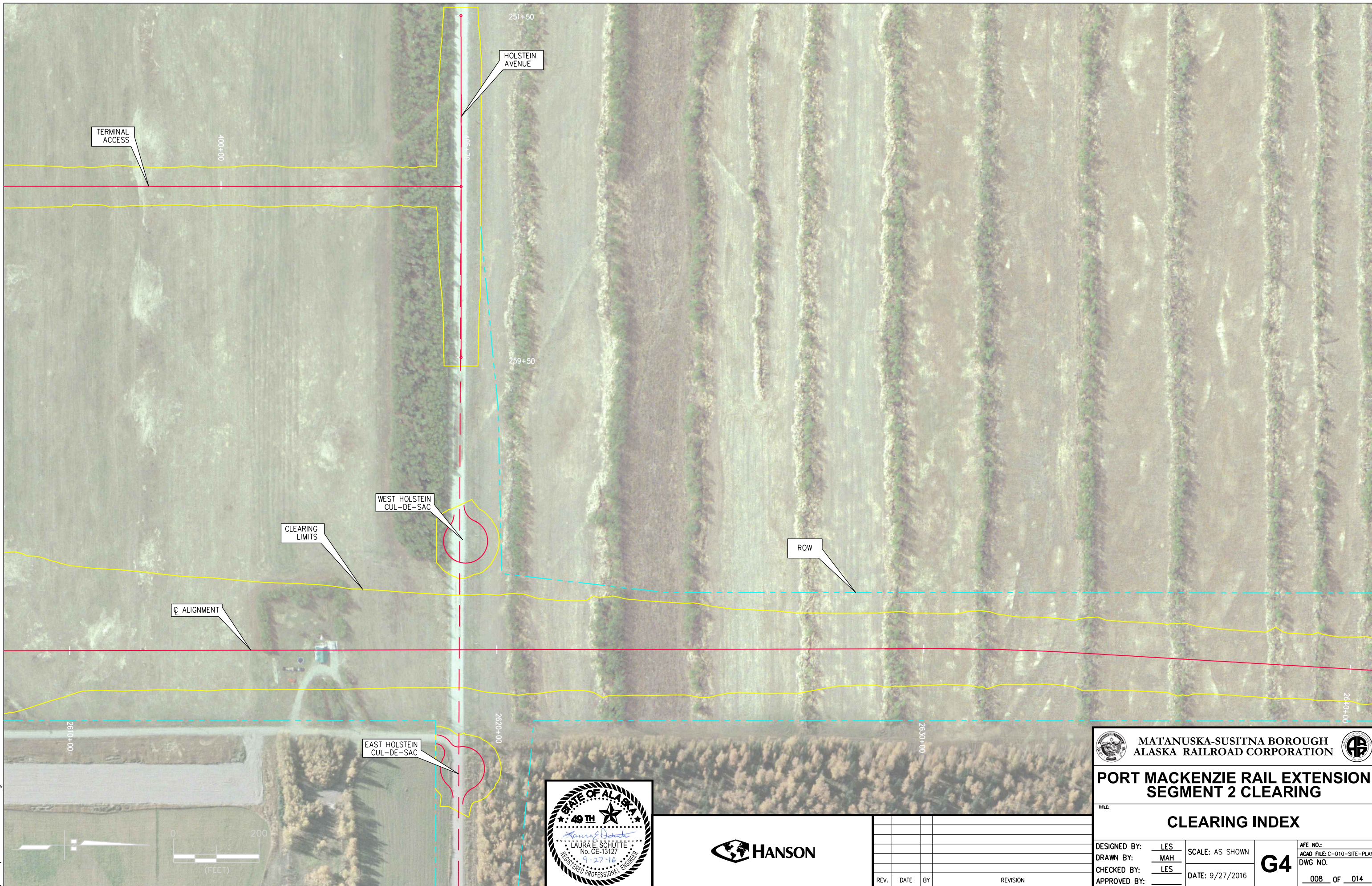
ROW





REV.	DATE	BY	REVISION

MATANUSKA-SUSITNA BOROUGH ALASKA RAILROAD CORPORATION		
PORT MACKENZIE RAIL EXTENSION SEGMENT 2 CLEARING		
CLEARING INDEX		
DESIGNED BY: LES	SCALE: AS SHOWN	G4 <small>ACAD FILE: C-009-SITE-PLAN.dwg DWG NO. 007 OF 014</small>
DRAWN BY: MAH	DATE: 9/27/2016	
CHECKED BY: LES		
APPROVED BY:		

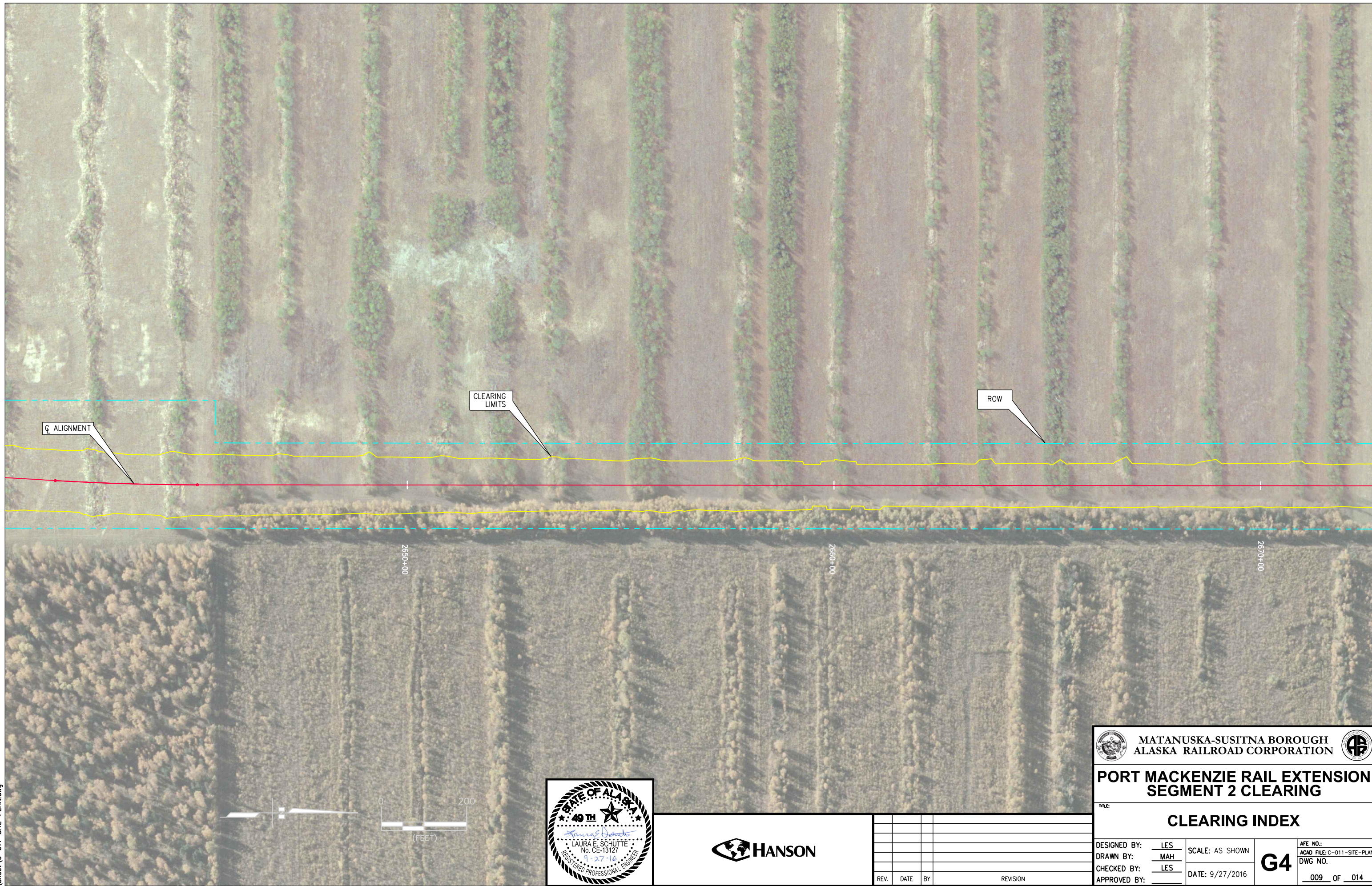
9/27/2016 ARRC-STD_SEC2_ClearingOnly.tbl
 ...Sheet\C-010-SITE-PLAN.dwg



REV.	DATE	BY	REVISION

 MATANUSKA-SUSITNA BOROUGH ALASKA RAILROAD CORPORATION		
PORT MACKENZIE RAIL EXTENSION SEGMENT 2 CLEARING		
CLEARING INDEX		
DESIGNED BY: <u>LES</u>	SCALE: AS SHOWN	G4 <small>ACAD FILE: C-010-SITE-PLAN.dwg DWG NO. 008 OF 014</small>
DRAWN BY: <u>MAH</u>	DATE: 9/27/2016	
CHECKED BY: <u>LES</u>		
APPROVED BY: <u> </u>		

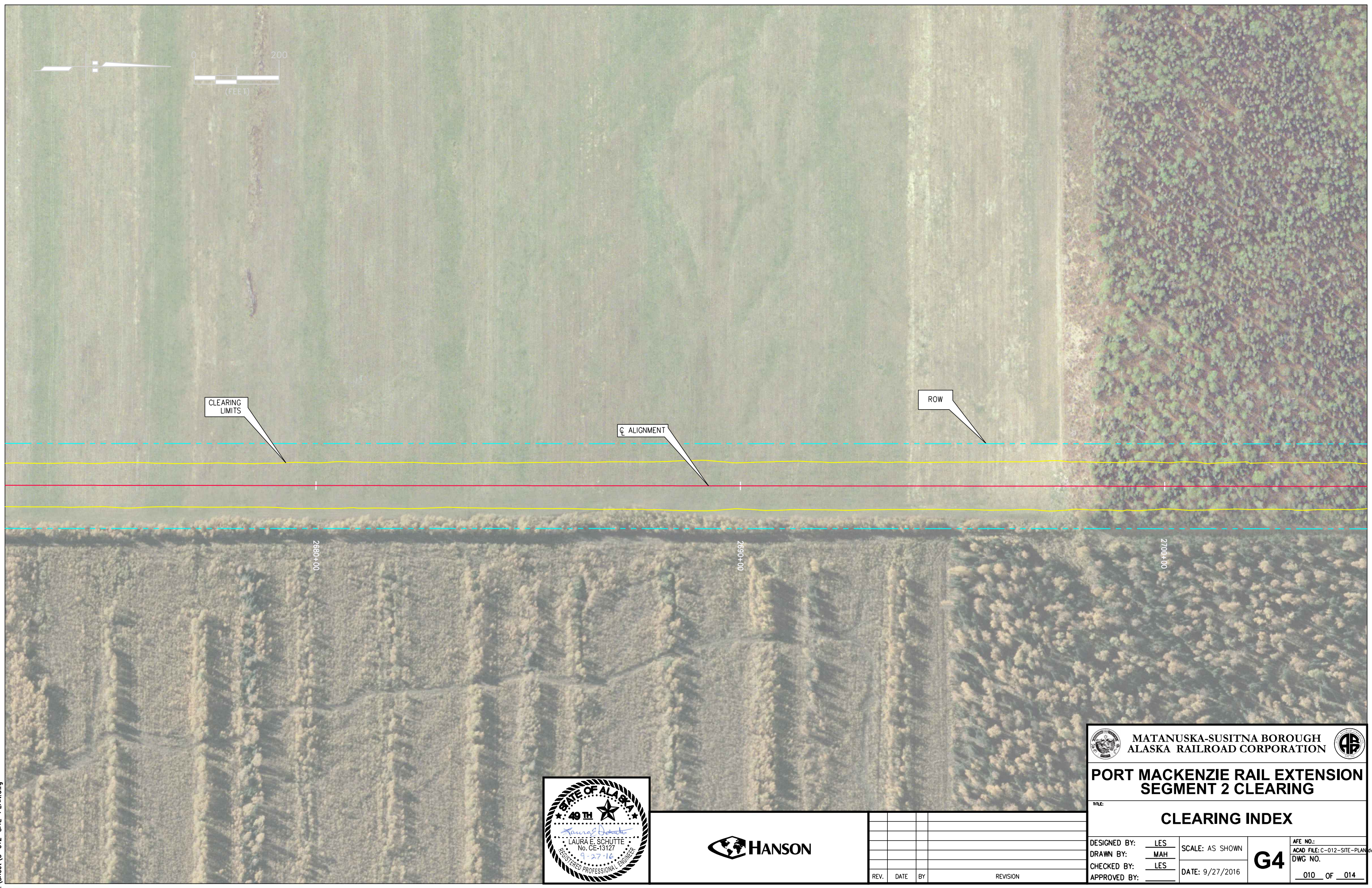
9/27/2016 ARRC-STD_SEC2_ClearingOnly.tbl
 ... \Sheet\C-011-SITE-PLAN.dwg



REV.	DATE	BY	REVISION

MATANUSKA-SUSITNA BOROUGH ALASKA RAILROAD CORPORATION			
PORT MACKENZIE RAIL EXTENSION SEGMENT 2 CLEARING			
CLEARING INDEX			
DESIGNED BY:	LES	SCALE:	AS SHOWN
DRAWN BY:	MAH	DATE:	9/27/2016
CHECKED BY:	LES		
APPROVED BY:		G4	AFE NO.: ACAD FILE: C-011-SITE-PLAN.dwg DWG NO.: 009 OF 014

9/27/2016 ARRC-STD_SEC2_ClearingOnly.tbl
 ... \Sheet\C-012-SITE-PLAN.dwg



CLEARING LIMITS

CL ALIGNMENT

ROW

2680+00

2690+00

2700+00



REV.	DATE	BY	REVISION

MATANUSKA-SUSITNA BOROUGH ALASKA RAILROAD CORPORATION		
PORT MACKENZIE RAIL EXTENSION SEGMENT 2 CLEARING		
TITLE:		
CLEARING INDEX		
DESIGNED BY: LES	SCALE: AS SHOWN	G4 AFE NO.: ACAD FILE: C-012-SITE-PLAN.dwg DWG NO.:
DRAWN BY: MAH	DATE: 9/27/2016	
CHECKED BY: LES		010 OF 014
APPROVED BY:		

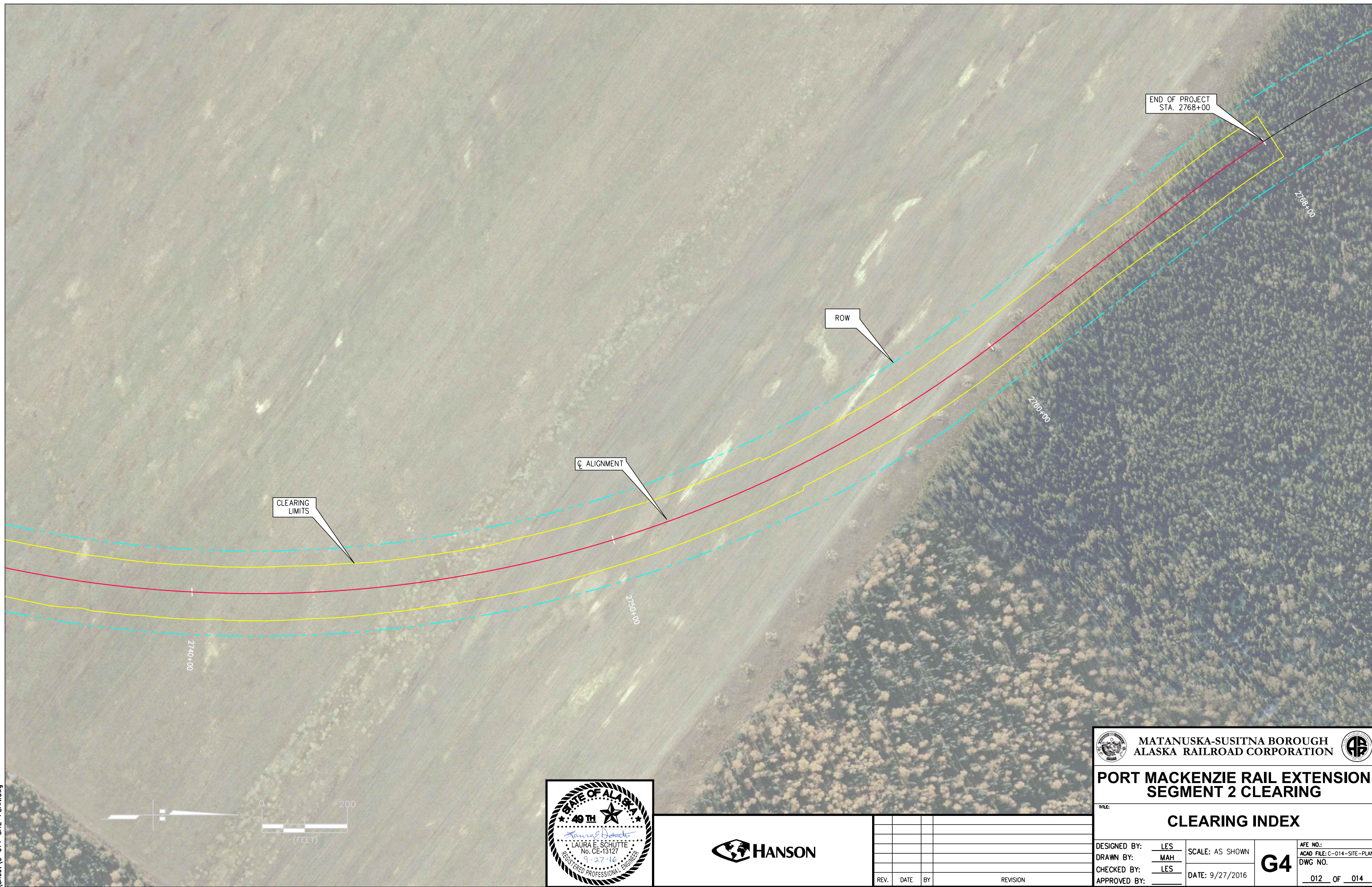
9/27/2016 ARRC-STD_SEC2_ClearingOnly.tbl
 ... \Sheet\C-013-SITE-PLAN.dwg



REV.	DATE	BY	REVISION

MATANUSKA-SUSITNA BOROUGH ALASKA RAILROAD CORPORATION			
PORT MACKENZIE RAIL EXTENSION SEGMENT 2 CLEARING			
CLEARING INDEX			
DESIGNED BY: LES	SCALE: AS SHOWN	G4	AFE NO.:
DRAWN BY: MAH	DATE: 9/27/2016		ACAD FILE: C-013-SITE-PLAN.dwg
CHECKED BY: LES			DWG NO. 011 OF 014
APPROVED BY:			

9/27/2016 ARRC-STD_SEC2_ClearingOnly.tbl
... \Sheet\C-014-SITE-PLAN.dwg





REV.	DATE	BY	REVISION

PORT MACKENZIE RAIL EXTENSION SEGMENT 2 CLEARING	
TITLE: CLEARING INDEX	
DESIGNED BY: LES	SCALE: AS SHOWN
DRAWN BY: MAH	G4
CHECKED BY: LES	
APPROVED BY: _____	DWG NO. 012 OF 014

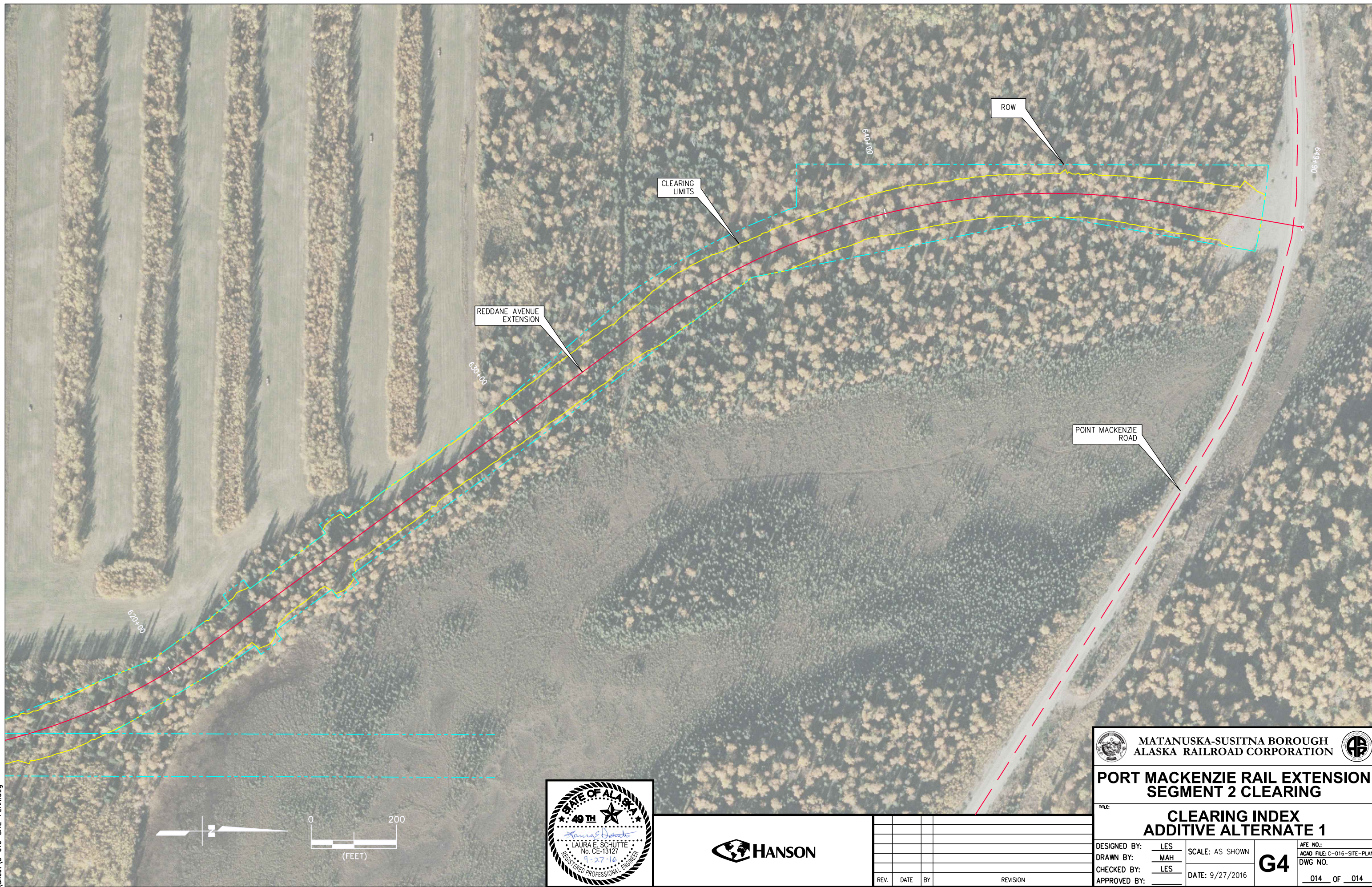
9/27/2016 ARRC-STD_SEC2_ClearingOnly.tbl
 ... \Sheet\C-015-SITE-PLAN.dwg



REV.	DATE	BY	REVISION

 MATANUSKA-SUSITNA BOROUGH ALASKA RAILROAD CORPORATION 	
PORT MACKENZIE RAIL EXTENSION SEGMENT 2 CLEARING	
CLEARING INDEX ADDITIVE ALTERNATE 1	
DESIGNED BY: <u>LES</u> DRAWN BY: <u>MAH</u> CHECKED BY: <u>LES</u> APPROVED BY: _____	SCALE: AS SHOWN DATE: 9/27/2016 <div style="font-size: 2em; font-weight: bold; text-align: center;">G4</div>
AFE NO.: _____ ACAD FILE: C-015-SITE-PLAN.dwg DWG NO.: <u>013</u> OF <u>014</u>	

9/27/2016 ARRC-STD_SEC2_ClearingOnly.tbl
... \Sheet\C-016-SITE-PLAN.dwg



MATANUSKA-SUSITNA BOROUGH
ALASKA RAILROAD CORPORATION

**PORT MACKENZIE RAIL EXTENSION
SEGMENT 2 CLEARING**

TITLE:
**CLEARING INDEX
ADDITIVE ALTERNATE 1**

DESIGNED BY: LES	SCALE: AS SHOWN	G4	AFE NO.:
DRAWN BY: MAH	DATE: 9/27/2016		ACAD FILE: C-016-SITE-PLAN.dwg
CHECKED BY: LES			DWG NO.:
APPROVED BY:			014 OF 014



REV.	DATE	BY	REVISION