

ELEVATION - END VIEW

ELEVATION - SIDE VIEW

ELEVATION - END VIEW

TOLERANCES

TANK	DN / +10
CAPACITY	-0.1
OVERALL LENGTH	-0.1
OVERALL WIDTH	-0.1
OVERALL HEIGHT	-0.1
OTHER DIMENSIONS	-0.1

1-200-281-5000

AcceDike - 1,500 GALLON

DIKE TANK
FLOOR: 10 GAUGE (9/64")
WALL: 10 GAUGE (9/64")
COMWLING: 10 GAUGE (9/64")

COATING:
7" EXTERIOR COATING, ACE 1A
RED SHOP COAT 1-3 MILS
3A EXTERIOR ACE 3A COATING:
SP-6 GRIT BLAST
3A COLOR: #WH01 (WHITE)
1 CT TN-161 EPOXY 3.0-5.0 MILS
1 CT TN-74 URETHANE 2.0-3.0 MILS
INTERIOR:
BARE STEEL

SPECIAL INSTRUCTIONS
PLUG TIGHT
WRENCH PLUG TIGHT WITH PIPE DOPE
ON THREADS AND TESTED LEAK FREE.
STIFFENERS ARE NOT SHOWN IN
ELEVATION VIEWS FOR CLARITY

APPROXIMATE SHIPPING WEIGHT
3,425 LBS.

TANK VENT CAPACITY
168,000 PRIMARY

SHEET 2 OF



AC01500U2D2

QTY: 1

DIKE TANK
FLOOR: 10 GAUGE (9/64")
WALL: 10 GAUGE (9/64")
COMWLING: 10 GAUGE (9/64")

APPROXIMATE SHIPPING WEIGHT
3,425 LBS.

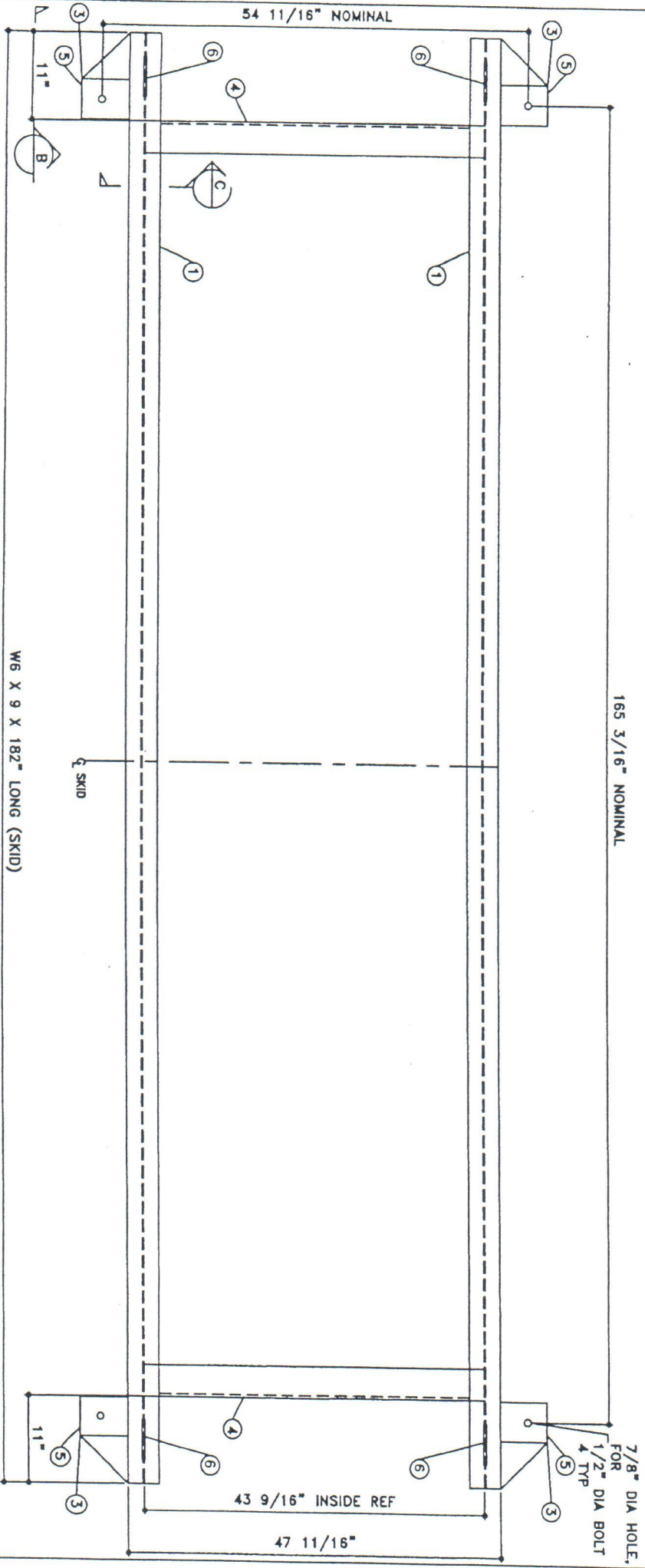
TANK VENT CAPACITY
168,000 PRIMARY

SHEET 2 OF

NOTE:
1. ALL NOMINAL DIMENSIONS ARE 2"±

BILL OF MATERIAL

ITEM/ QTY	NAME	DESCRIPTION	MATL	PART No.	NOTES
1	SKID BEAM	W6 X 9 X 182" LONG	A36	-	MOUNT, COAT
2	SKID CAP	PLATE	-	-	MOUNT, COAT
4	SKID CROSS BRACE	L4 X 4 X 3/8 X 43 9/16" LONG TOE DOWN COPE ENDS	A36	-	MOUNT, COAT
5	SEISMIC HOLD DOWN	PLATE	A36	-	MOUNT, COAT
6	TOW EYE	PLATE	A36	-	SEE DTL SHIT



TOP VIEW

SKID DETAILS

QUANTITY: 1
PART NAME: TYPICAL - 1500 GALLON TANK SKID
AC01500U2D2

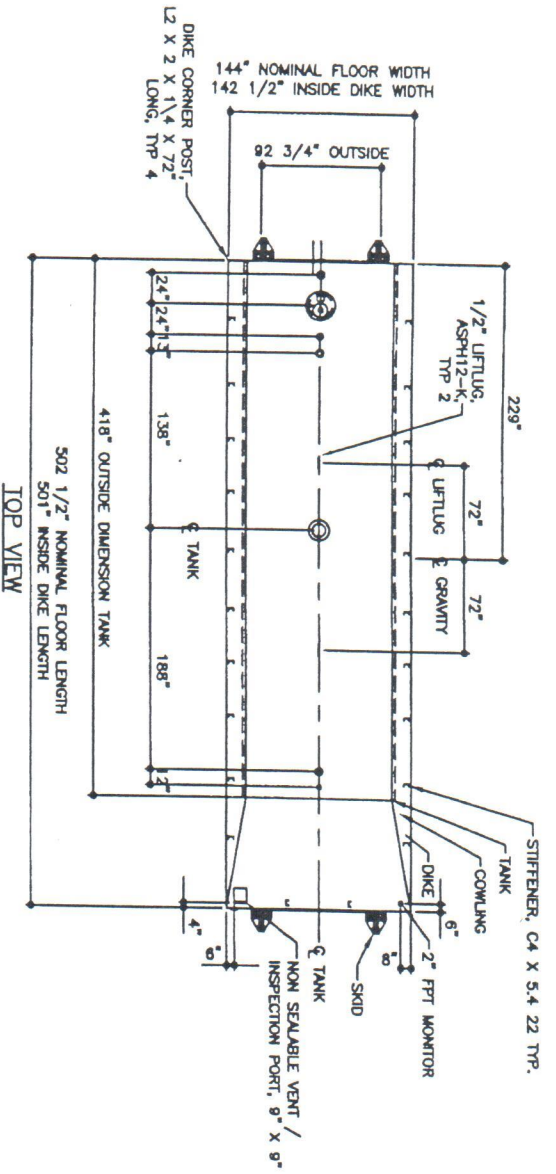
Acetank
EQUIPMENT
P.O. Box 9039
Seattle, WA 98109-0039

JOB NO.	ACQ HOUSE PART NO.	ACQ PART NO.	OTHER DIMENSIONS
-	-	-	-

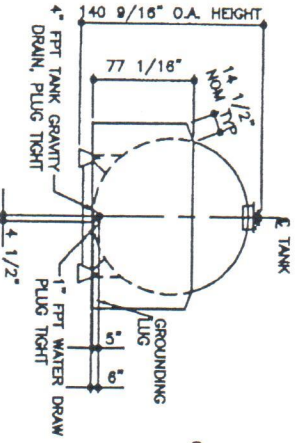
TOLERANCES	SKID
OVERALL LENGTH	±1/4"
OVERALL WIDTH	±1/4"
OVERALL HEIGHT	±1/4"
OTHER DIMENSIONS	±1/8"

No.	REVISION/REVISION	DATE	BY	CHECKED BY	SHEET
1	1ST SUBMITTAL	-	-	-	OF

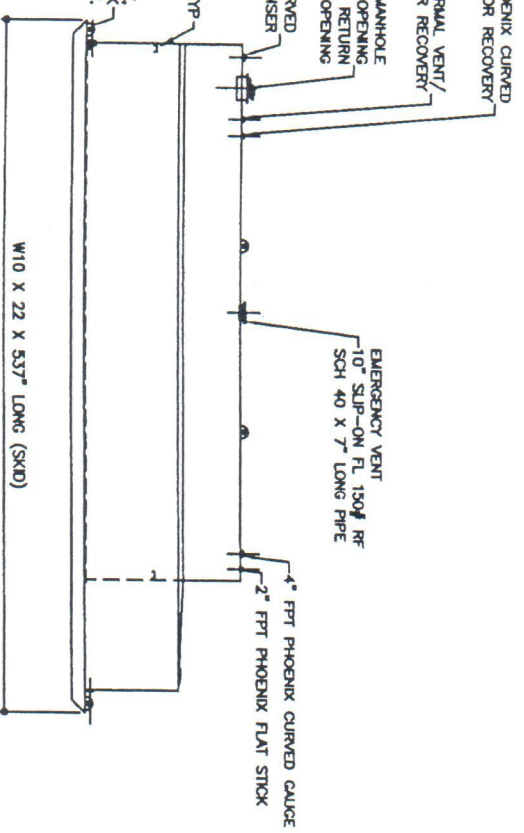
01-01-01 SUPERCEDES



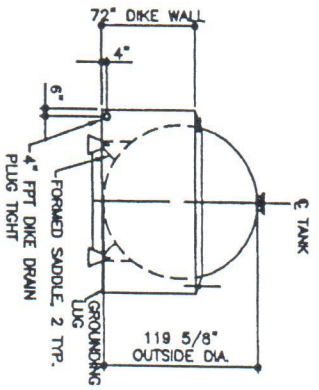
TOP VIEW



ELEVATION - END VIEW



ELEVATION - SIDE VIEW



ELEVATION - END VIEW

TOLERANCES

TANK	-0.010
CAPACITY	-0.010
OVERALL LENGTH	-0.010
OVERALL WIDTH	-0.010
OVERALL HEIGHT	-0.010
OTHER DIMENSIONS	-0.010

UL 142 (BUILT & LABELED) HOLD-DOWNS ARE SEISMIC RATED DIKE TANK WITH SKID

AcceDike - 20,000 GALLON

AC20000U2D2

QTY: 1

STEEL: ASTM A36

PRIMARY TANK SHELL: 2 GAUGE (1/4") HEAD: 2 GAUGE (1/4")

DIKE TANK FLOOR: 6 GAUGE (3/16") WALL: 10 GAUGE (3/64") COMWLING: 10 GAUGE (3/64")

COATING:

R- EXTERIOR COATING, ACE 1A RED SHOP COAT 1-3 MILS

SP-6 EXTERIOR ACE 3A COATING: 3A COLOR: #MH01 (WHITE) 1 CT TN-161 EPOXY 3.0-5.0 MILS 1 CT TN-74 URETHANE 2.0-3.0 MILS

SPECIAL INSTRUCTIONS

PUG TIGHT WRENCH PUG TIGHT WITH PIPE DOPE ON THREADS AND TESTED LEAK FREE.

STIFFENERS ARE NOT SHOWN IN ELEVATION VIEWS FOR CLARITY

APPROXIMATE SHIPPING WEIGHT

26,800 LBS.

TANK VENT CAPACITY 524,000 PRIMARY

DRAWN BY

REV No

1

SHEET

2

OF



AC20000U2D2

QTY: 1

DIKE TANK FLOOR: 6 GAUGE (3/16") WALL: 10 GAUGE (3/64") COMWLING: 10 GAUGE (3/64")

COATING: R- EXTERIOR COATING, ACE 1A RED SHOP COAT 1-3 MILS SP-6 EXTERIOR ACE 3A COATING: 3A COLOR: #MH01 (WHITE) 1 CT TN-161 EPOXY 3.0-5.0 MILS 1 CT TN-74 URETHANE 2.0-3.0 MILS

SPECIAL INSTRUCTIONS PUG TIGHT WRENCH PUG TIGHT WITH PIPE DOPE ON THREADS AND TESTED LEAK FREE. STIFFENERS ARE NOT SHOWN IN ELEVATION VIEWS FOR CLARITY

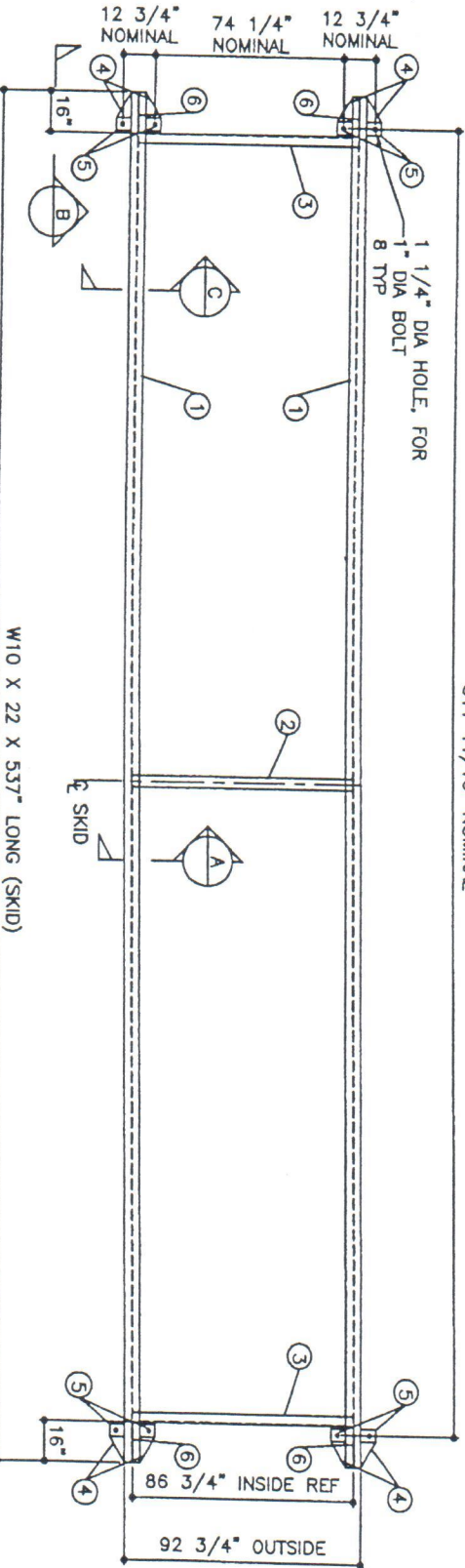
APPROXIMATE SHIPPING WEIGHT 26,800 LBS. TANK VENT CAPACITY 524,000 PRIMARY

DRAWN BY REV No 1 SHEET 2 OF

NOTE:
1. ALL NOMINAL DIMENSIONS ARE 3"±

BILL OF MATERIAL

ITEM/QTY	NAME	DESCRIPTION	MATL	PART No.	NOTES
1	SKID BEAM	W10 X 22 X 537" LONG	A36	-	MOUNT, COAT
2	SKID CROSS BRACE	4" SCH. 40 PIPE X 86 3/4" LONG	A36	-	MOUNT, COAT
3	SKID CROSS BRACE	1 1/2" X 4" X 3/8" X 86 3/4" LONG TOE DOWN COPE ENDS	A36	-	MOUNT, COAT
4	SKID CAP	PLATE	A36	-	SEE DTL SHIT
5	SEISMIC HOLDDOWN	PLATE	A36	-	SEE DTL SHIT
6	TOW EYE	PLATE	A36	-	SEE DTL SHIT



511 11/16" NOMINAL

W10 X 22 X 537" LONG (SKID)

TOP VIEW



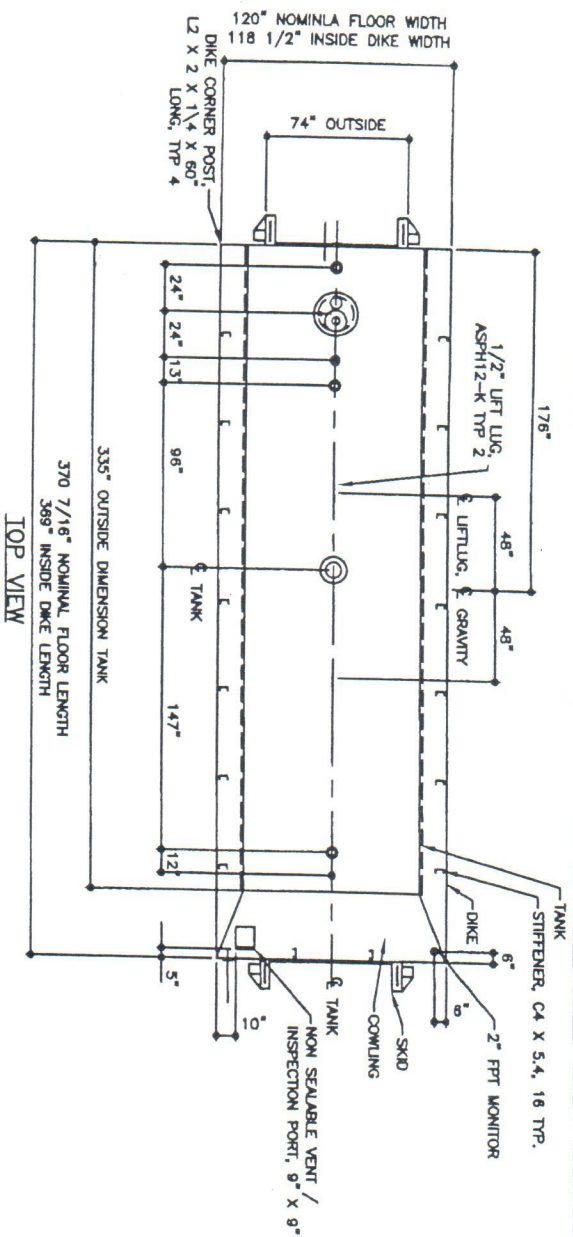
P.O. Box 9039
Seattle, WA 98109-0039

JOB NO.	ACE HOUSE PAPER NO.	OVERALL LENGTH	OVERALL WIDTH	OVERALL HEIGHT	OTHER DIMENSIONS
-	-	-14' 7 1/4"	-14' 7 1/4"	-14' 7 1/4"	-18' 7 1/8"

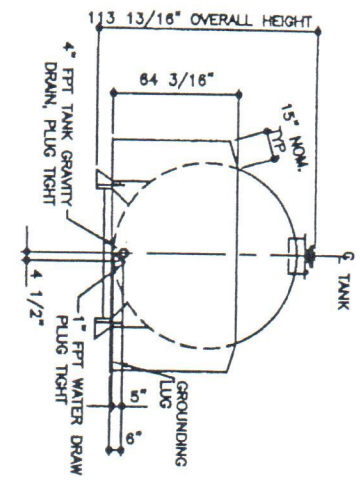
QUANTITY	PART NAME	SKID DETAILS
1	ACE PART NO. (148)	TYPICAL - 20,000 GALLON TANK SKID AC20000U2D2

No.	DATE	DESCRIPTION	DRAWN BY	CHECKED BY	SHEET
1		1ST SUBMITTAL			OF

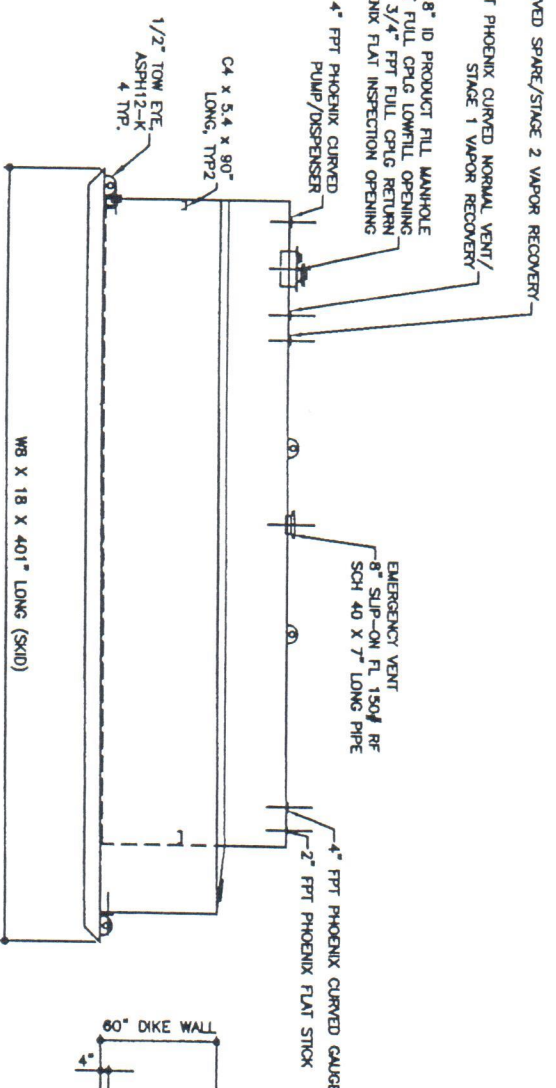
01-01-01 SUPERCEDES



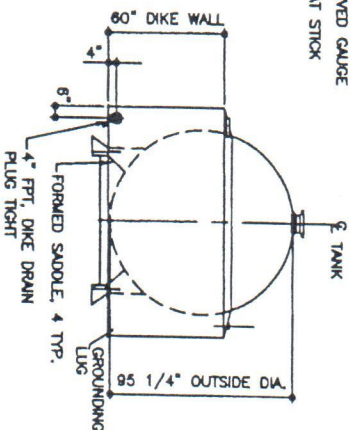
TOP VIEW



ELEVATION - END VIEW



ELEVATION - SIDE VIEW



ELEVATION - END VIEW

TOLERANCES

TANK	±0.1/16
CAPACITY	±0.1/4
OVERALL LENGTH	±0.1/4
OVERALL WIDTH	±0.1/4
OVERALL HEIGHT	±0.1/4
OTHER DIMENSIONS	±0.1/4

UL 142 (BUILT & LABELED)
HOLD-DOWNS ARE SEISMIC RATED
DIKE TANK WITH SKID

Acedike - 10,000 GALLON

ACE PART NO. AC10000U2D2

QTY: 1

STEEL: ASTM A36

PRIMARY TANK
SHELL: 2 GAUGE (1/4")
HEAD: 2 GAUGE (1/4")
DIKE TANK
FLOOR: 6 GAUGE (3/16")
WALL: 10 GAUGE (3/8")
COMWLING: 10 GAUGE (3/8")

COATING:

EXTERIOR COATING: ACE 1A
RED SHOP COAT 1-3 MILS
EXTERIOR ACE 3A COATING:
SP-6 GRIT BLAST
3A COL OR: #WH-01 (WHITE)
1 CT TN-161 EPOXY 3.0-5.0 MILS
1 CT TN-74 URETHANE 2.0-3.0 MILS
TDFT 5.0-8.0 MILS
INTERIOR:
BARE STEEL

SPECIAL INSTRUCTIONS

PLUG TIGHT
WRENCH PLUG TIGHT WITH PIPE DOPE
ON THREADS AND TESTED LEAK FREE.
STIFFENERS ARE NOT SHOWN IN
ELEVATION VIEWS FOR CLARITY

APPROXIMATE SHIPPING WEIGHT

16,990 LBS.

TANK VENT CAPACITY
392,000 PRIMARY



ACETANK EQUIPMENT

ACE PART NO. AC10000U2D2

QTY: 1

INTERIOR:
BARE STEEL

JOB NO. ACE HOUSE PART NO. ENG FILE NO.

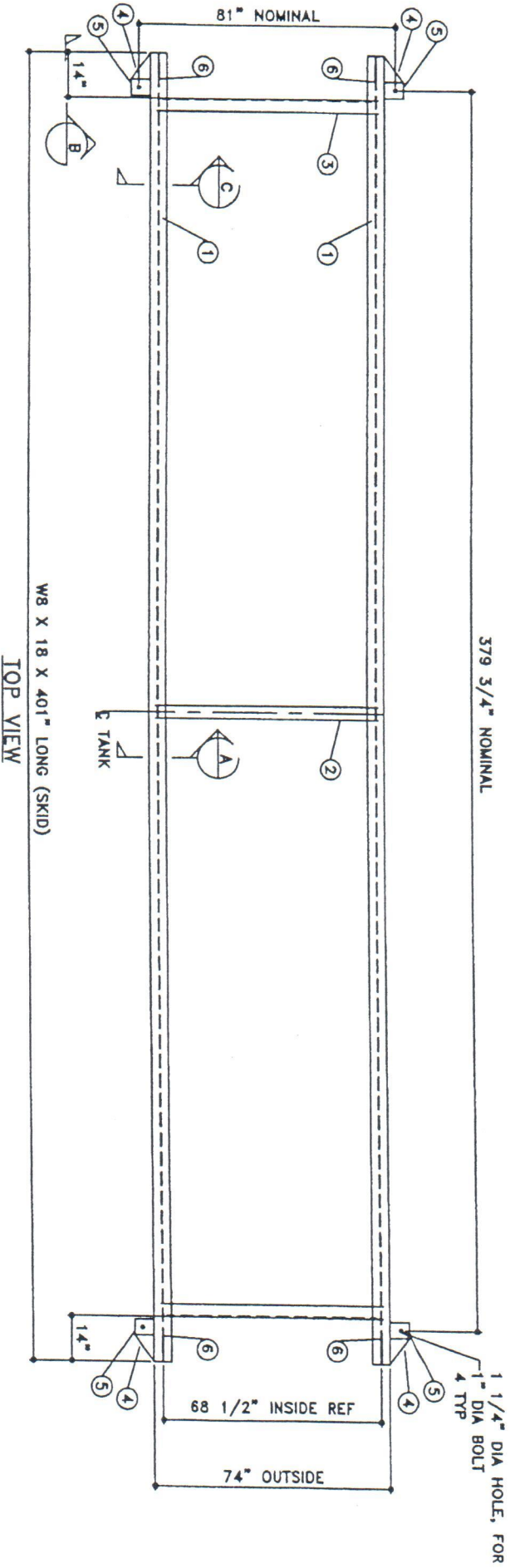
01-01-02 SUPERCEDES 09-01-01

OF

NOTE:
1. ALL NOMINAL DIMENSIONS ARE 3"±

BILL OF MATERIAL

ITEM QTY	NAME	DESCRIPTION	MATL	PART No.	NOTES
1	SKID BEAM	W8 X 18 X 401" LONG	A36	-	MOUNT, COAT
2	SKID CROSS BRACE	4" SCH 40 PIPE X 68 1/2" LONG	A36	-	MOUNT, COAT
3	SKID CROSS BRACE	1/4" X 4 X 5/8 X 68 1/2" LONG TOE DOWN COPE ENDS	A36	-	MOUNT, COAT
4	SKID CAP	PLATE	A36	-	SEE DTL SHT
5	SEISMIC HOLDOWN	PLATE	A36	-	SEE DTL SHT
6	TOW EYE	PLATE	A36	-	SEE DTL SHT



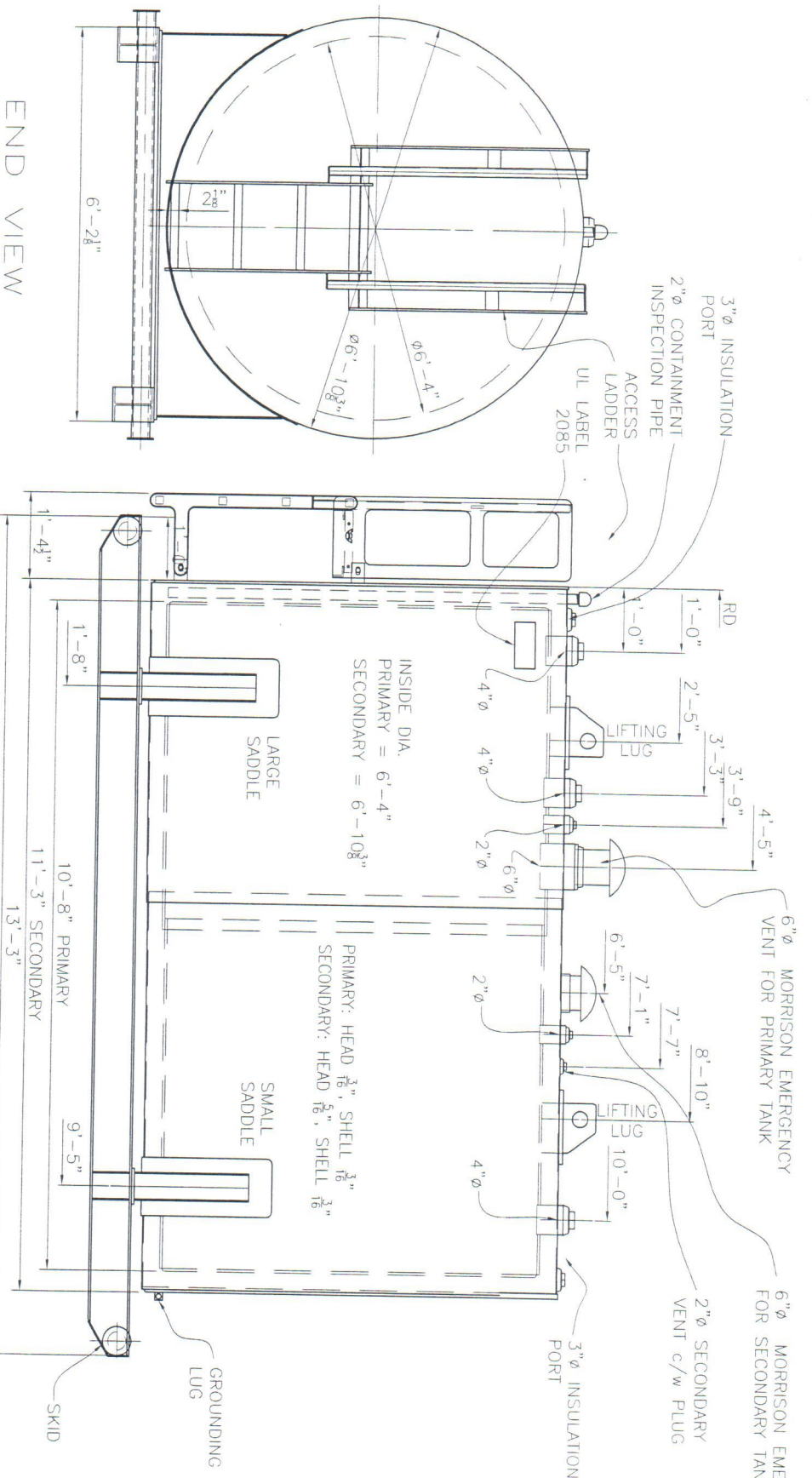
Acetank
EQUIPMENT
P.O. Box 9039
Seattle, WA 98109-0039

JOB NO.	FACE HOUSE PART NO.	OVERALL LENGTH	OVERALL WIDTH	OVERALL HEIGHT	OTHER DIMENSIONS
-	-	SKID -148' / +148'	-148' / +148'	-148' / +148'	-148' / +148'

QUANTITY	PART NAME	SKID DETAILS
1	TYPICAL - 10,000 GALLON TANK SKID	AC10000U2D2

No.	DRAWING/REVISION	DRAWN BY	CHECKED BY	SHEET
1	1ST SUBMITTAL	-	-	OF

01-01-01 SUPERCEDES



END VIEW

SIDE ELEVATION

PAINT NOTES:

SANDBLAST EXTERIOR & APPLY ONE 2-3 mils
COAT OF GREEN POLYURETHANE, CARBOLINE
TINT #2332-COURT YARD.

FITTING:

- (2) 2" FPT c/w PLUG & 3" SCH. 40 PIPE x 5"
- (3) 4" FPT c/w PLUG & 5" SCH. 40 PIPE x 5"
- (1) 6" FPT c/w 8" SCH. 40 PIPE x 6 1/2"

SOURCE (ACE TANK & FUELING EQUIPMENT)		PO #	387134	TRK #	US261
THE SIDE ELEVATION & END VIEW					
2500 US GALLON CONTAINED FIREGUARD TANK					
THE	REGAL	DATE	02/02/US261	SCALE	1"=1'-0"
2500G FHE-SOURCE		MAY 11, 2011		REV	01
REGAL TANKS USA LTD.					
MFG. BY TUDY FAB LTD.					
PHONE (960) 707-9948 FAX (960) 707-9949					