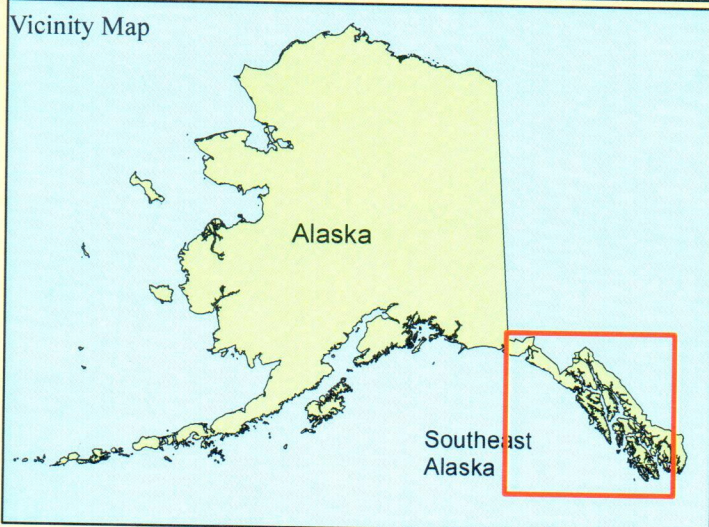
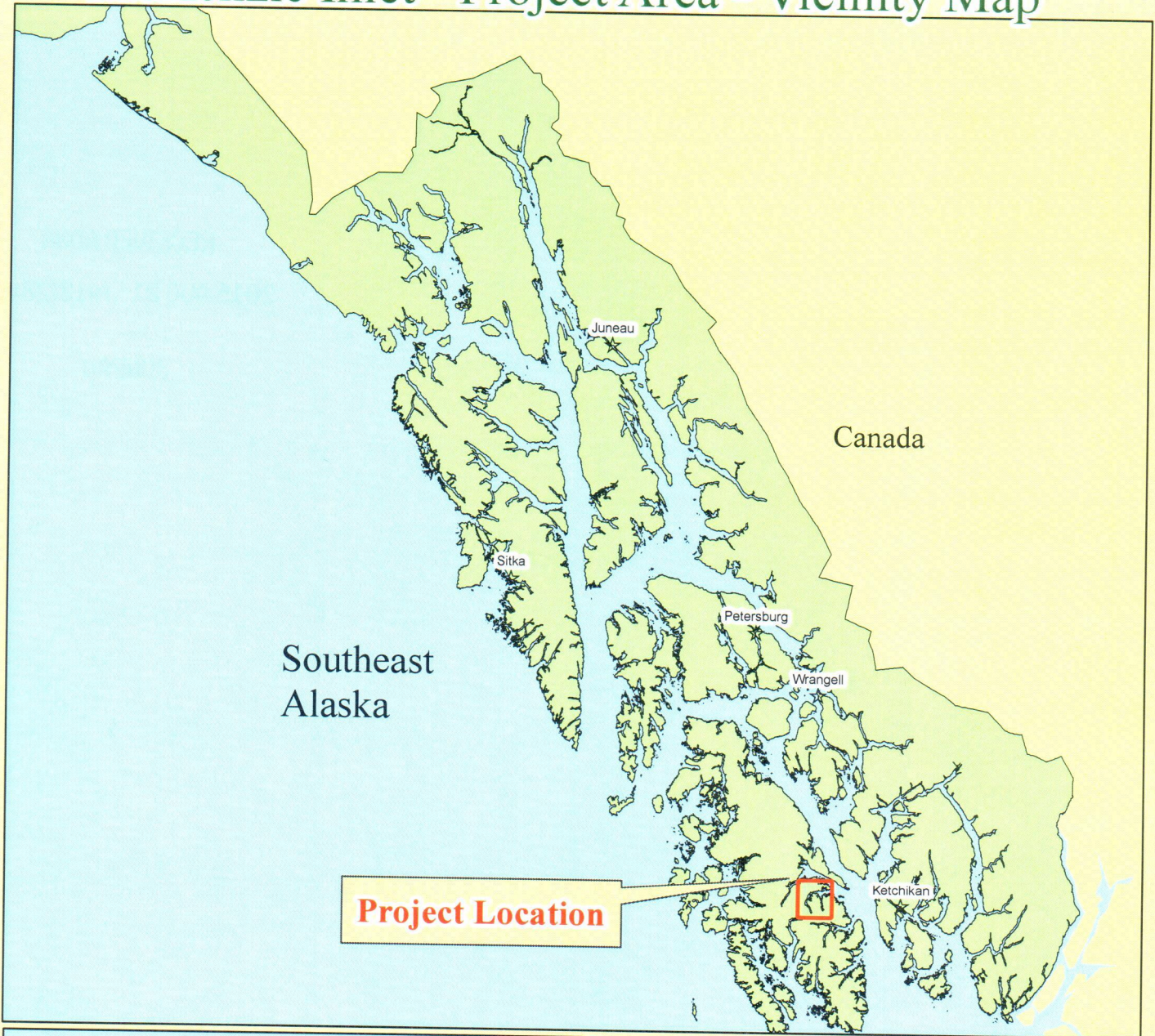
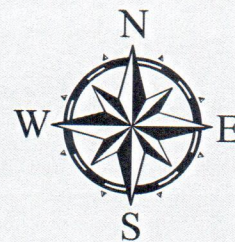


SEALASKA TIMBER CORPORATION McKenzie Inlet - Project Area - Vicinity Map



McKenzie Inlet - Log Rafting,
Log Storage, & Ship Moorage

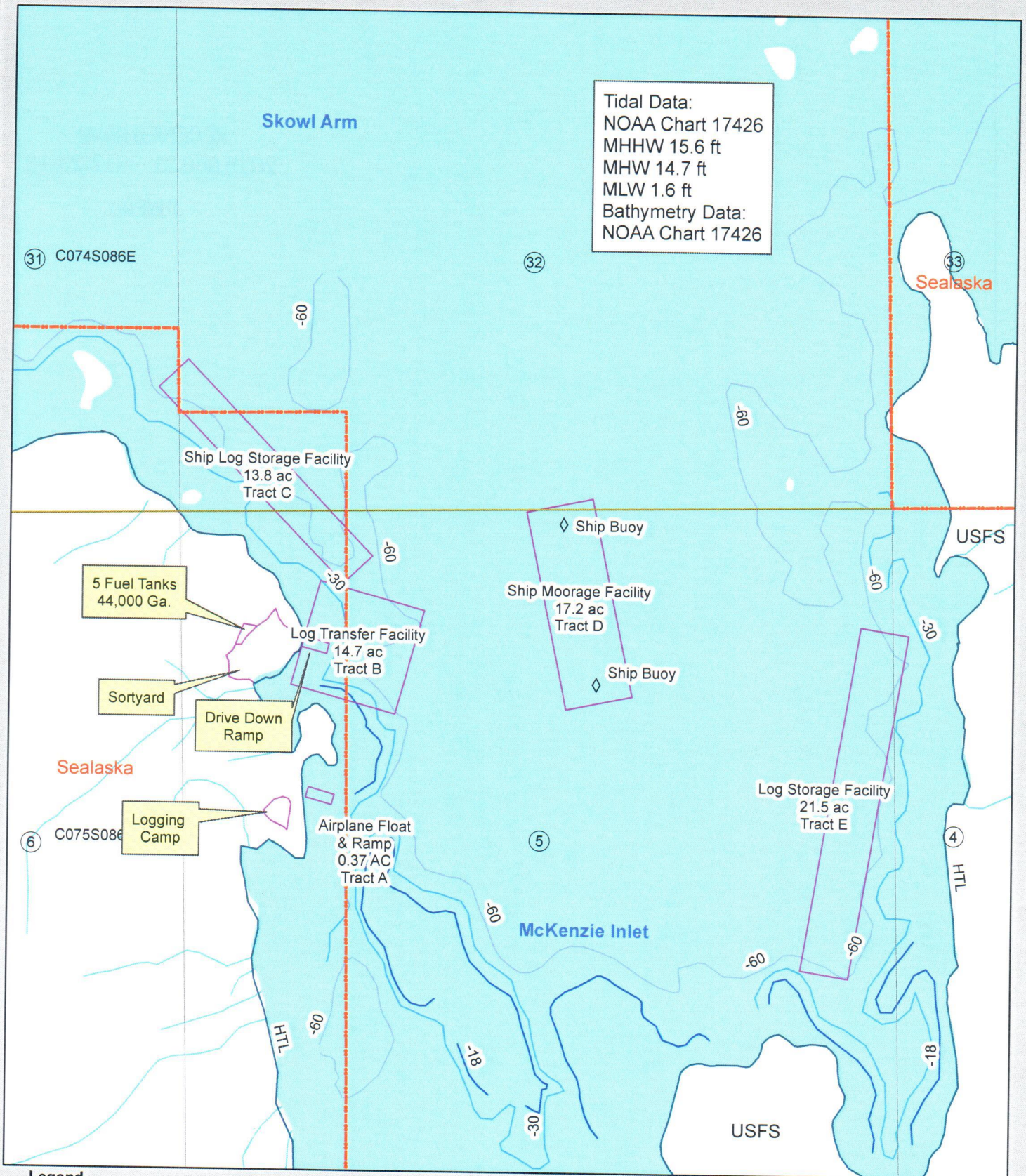


Prepared August 2015
STC GIS

SEALASKA TIMBER CORPORATION

McKenzie Inlet Log Rafting, Storage, and Ship Moorage

August 26, 2015



Legend

- | | | |
|---|---|--|
| Sealaska Timber Rights | — -18 ft | — Anadromous Streams |
| Section | — -30 ft | — Water Quality Streams |
| Township/Range | — -60 ft | — HTL |
| Facility Boundary | — HTL | — Point of Interest |



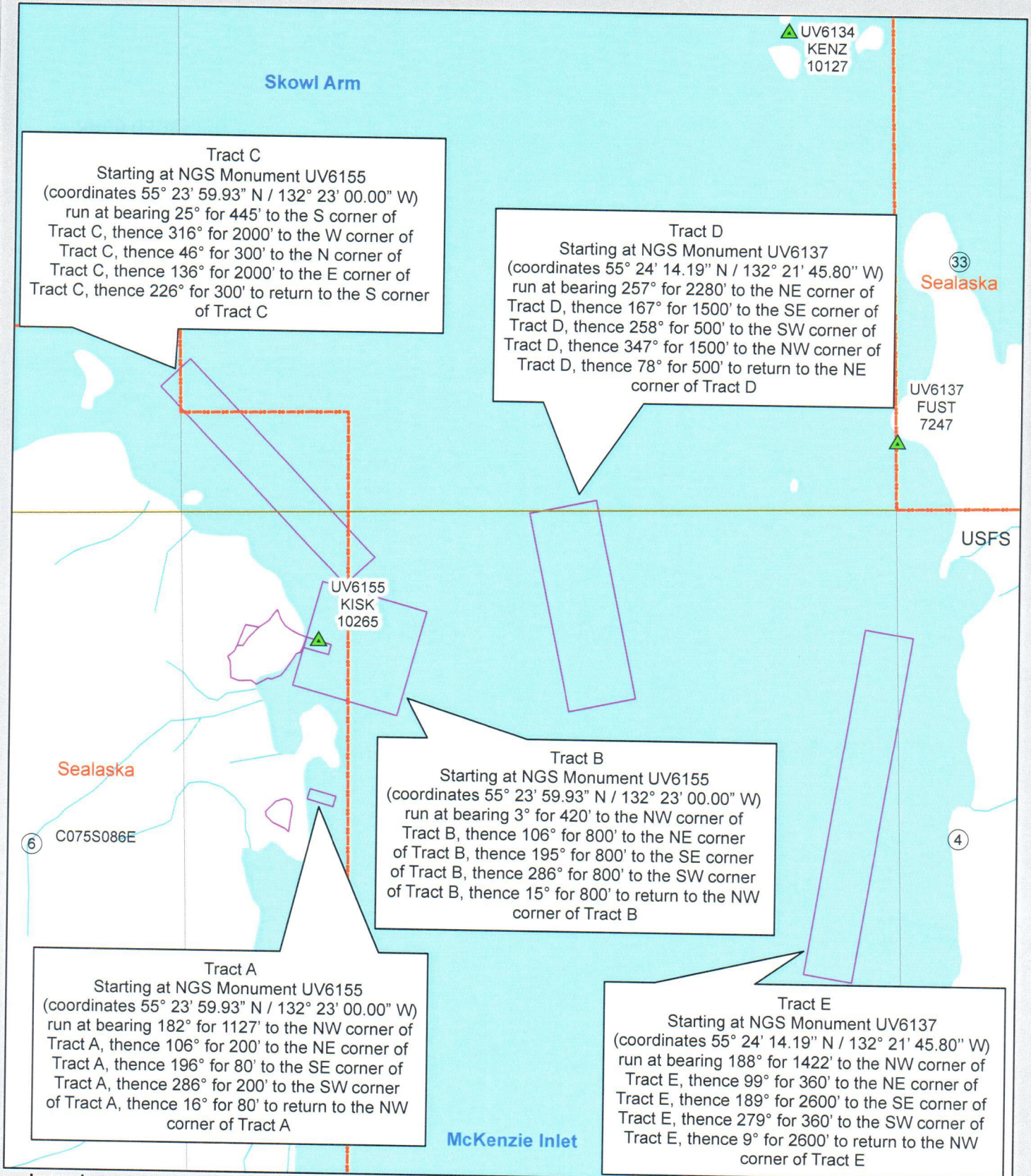
Prepared August 2015
STC GIS

1 in = 1,000 feet

SEALASKA TIMBER CORPORATION

McKenzie Inlet Log Rafting, Storage, and Ship Moorage

August 26, 2015



Legend

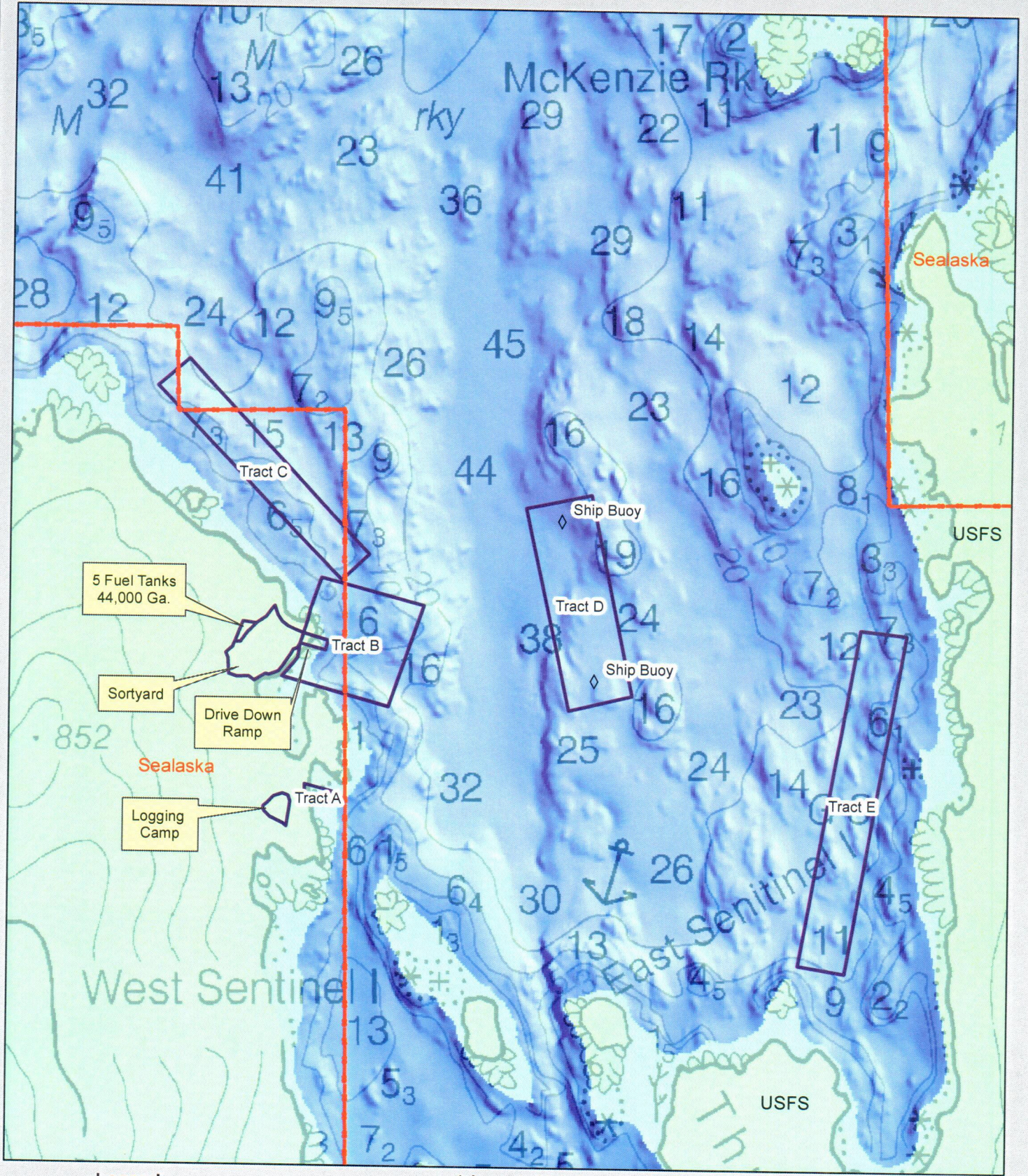
- Sealaska Timber Rights
- Anadromous Streams
- Section
- Water Quality Streams
- Township/Range
- Facility Boundary
- ▲ NGS Monuments



Prepared August 2015
STC GIS

1 in = 1,000 feet

SEALASKA TIMBER CORPORATION
McKenzie Inlet Log Rafting, Storage, and Ship Moorage
August 26, 2015



Legend

- Sealaska Timber Rights
- Facility_Boundary
- Point of Interest

1 in = 1,000 feet



Depth Labels in Fathoms from
NOAA Chart 17436

Prepared August 2015
STC GIS