

F A X Transmittal

DEPARTMENT OF TRANSPORTATION & PUBLIC FACILITIES
SOUTHCOST REGION DESIGN AND ENGINEERING SERVICES
6860 GLACIER HIGHWAY
JUNEAU, ALASKA 99801-7999
TELEPHONE: (907) 465-4489
FAX: (907) 465-4238

TO ALL PROSPECTIVE BIDDERS AND OTHERS INTERESTED IN PROJECT NO.
83934/0106(072); PSG: Mitkof Highway Road Weather Information System Relocation & Upgrade

ADDENDUM NO. ONE

July 7, 2015

This transmittal consists of forty-four (44) pages including this cover sheet. **If any pages are missing or clarification is needed, contact the Southcoast Regional Contracts Office immediately.**

The Contract Documents are modified as follows:

Invitation for Quotes for a Small Procurement (SPC-001). *Change the date for Receipt of Quotes from:* 2:00 PM local time on July 07, 2015 *to* 2:00 PM local time on July 9, 2015.

The following information is provided as clarification to the bid documents:

1. The wind generator pole cannot be used, per the electrical engineer. Please follow the wind generator base design and tower specifications (E3 of 6).
2. Please follow the solar panel stand design and installation, including the lightening rod, per specifications (E3 of 6).
3. There are standard basis of design and installation for the solar and wind lattice towers. These documents are identified as Attachment #1 to this addendum
4. It is believed the Millerbearnd tilt-down tower comes with a lightning rod kit- the Department will confirm. The Contractor will need to procure and install a lightning rod on the solar panel stand as indicated on the drawings.

You can download this addendum from the following website:

http://www.dot.state.ak.us/apps/contracts?ACTION=BIDCAL®ION_CODE=S

Bidders are required to acknowledge this addendum on the proposal form or by FAX prior to the bid opening.

Addendum Number (1) received.

83934/0106(072); PSG: Mitkof Highway Road Weather Information System Relocation & Upgrade

Name/Title

Date

Firm

SELF-SUPPORTING TOWERS



STANDARD G-SERIES SELF-SUPPORTING



G-SERIES SELF-SUPPORTING

GENERAL USE

The self-supporting G-Series towers offer an easy, low-cost solution to get light weight antennas in the air quickly. By using the G-Series tower as a self-supporting structure, you minimize land area usage. They are functional in a wide variety of wind speeds. See ROHN's standard designs to help identify the right structure for your project. These are the same sturdy, robust tower sections that ROHN has fabricated for years. Each larger model allows for more loading capacity.

FEATURES

- Completely hot-dip galvanized after fabrication
- Cross bracing is formed by a continuous solid rod bracing fashioned into a zig-zag pattern for strength
- Pre-engineered loading charts meet varying individual specs and site conditions
- Typical uses include: small dishes, broadband, security and two-way communication
- All towers have 'fixed' bases

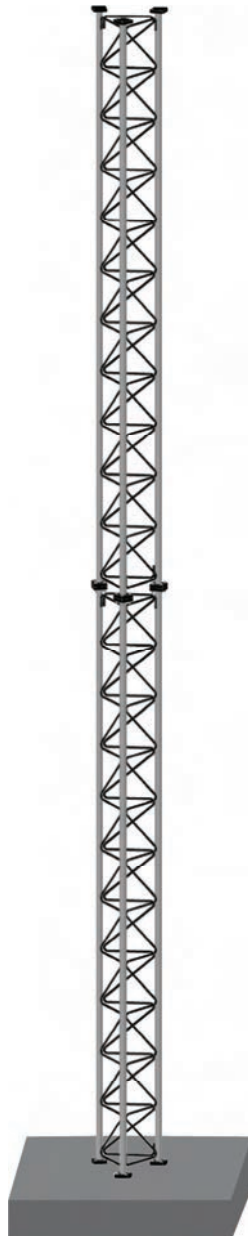
KITS

The kit part numbers for ROHN Self-Supporting G-Series towers include:

- Short base for embedment in concrete
- Rev F ground kit
- All tower sections and connection hardware
- Tapered top (25G and 45G towers)
- Top plate (55G towers)
- Cap plate kit (65G towers)



Typical Self-Supporting
25G, 45G and 55G Tower



Typical Self-Supporting
45GSR and 65G Tower

Per Rev G requirements, any structure greater than 10' requires a climber safety device. Please see page 209 for ordering information.

G SERIES**REV. F ALLOWABLE ANTENNA AREAS (SQ. FT.)****70 MPH**
Fastest Mile

70 MPH Fastest Mile Wind Speed - No Ice								
Height	25G		45G		55G		65G	
	FT ²	Part No.	FT ²	Part No.	FT ²	Part No.	FT ²	Part No.
10'	19.7	25SS010	42.5	45SS010	75.0	55SS010	95.0	65SS010
20'	14.2	25SS020	22.0	45SS020	43.0	55SS020	95.0	65SS020
30'	6.4	25SS030	12.0	45SS030	26.0	55SS030	76.2	65SS030
35'	3.6	25SS035	8.7	45SS035	21.9	55SS035	61.2	65SS035
40'	1.5	25SS040	5.1	45SS040	15.0	55SS040	48.8	65SS040
45'			2.3	45SS045	11.4	55SS045	39.0	65SS045
50'					6.5	55SS050	29.3	65SS050
55'					4.0	55SS055	24.4	65SS055
60'					0.8	55SS060	18.4	65SS060
70'							8.7	65SS070
80'							0.9	65SS080

80 MPH
Fastest Mile

80 MPH Fastest Mile Wind Speed - No Ice								
Height	25G		45G		55G		65G	
	FT ²	Part No.	FT ²	Part No.	FT ²	Part No.	FT ²	Part No.
10'	14.3	25SS010	30.0	45SS010	57.0	55SS010	95.0	65SS010
20'	9.0	25SS020	16.0	45SS020	30.0	55SS020	85.0	65SS020
30'	3.7	25SS030	7.5	45SS030	17.0	55SS030	55.8	65SS030
35'	1.4	25SS035	4.7	45SS035	14.5	55SS035	44.0	65SS035
40'			1.4	45SS040	8.0	55SS040	34.1	65SS040
45'					5.9	55SS045	26.2	65SS045
50'					1.5	55SS050	19.7	65SS050
55'							14.5	65SS055
60'							9.4	65SS060
70'							1.3	65SS070

90 MPH
Fastest Mile

90 MPH Fastest Mile Wind Speed - No Ice								
Height	25G		45G		55G		65G	
	FT ²	Part No.	FT ²	Part No.	FT ²	Part No.	FT ²	Part No.
10'	10.5	25SS010	25.0	45SS010	45.0	55SS010	95.0	65SS010
20'	6.9	25SS020	11.0	45SS020	23.0	55SS020	65.0	65SS020
30'	1.7	25SS030	4.0	45SS030	12.0	55SS030	40.0	65SS030
35'			1.9	45SS035	9.4	55SS035	32.2	65SS035
40'					4.0	55SS040	24.1	65SS040
45'					2.2	55SS045	17.7	65SS045
50'							14.5	65SS050
55'							7.7	65SS055
60'							3.3	65SS060

Note: Antenna areas, ft.², assume all round antenna members.

NO ICE



G SERIES

REV. G EFFECTIVE PROJECTED AREA (SQ. FT.)

90 MPH
3-Second Gust

90 MPH 3-Second Gust Wind Speed															
Height	25G			45G			45GSR			55G			65G		
	EPA		Part No.	EPA		Part No.	EPA		Part No.	EPA		Part No.	EPA		Part No.
	Exp.B	Exp.C		Exp.B	Exp.C		Exp.B	Exp.C		Exp.B	Exp.C		Exp.B	Exp.C	
10'	26.8	21.3	25SS010	60.0	47.5	45SS010	95	84	45SR010	80	79	55SS010	95	95	65SS010
20'	18.5	13.4	25SS020	31.3	22.7	45SS020	95	71	45SR020	56	42	55SS020	95	95	65SS020
30'	7.9	4.1	25SS030	16.1	8.4	45SS030	87	58	45SR030	34	21	55SS030	95	71	65SS030
35'	4.4	1.2	25SS035	9.8	3.8	45SS035	76	52	45SR035	25	14	55SS035	80	54	65SS035
40'	1.3	-	25SS040	4.9	-	45SS040	60	40	45SR040	17	8	55SS040	62	41	65SS040
45'				0.7	-	45SS045	48	31	45SR045	11	3	55SS045	48	30	65SS045
50'							38	23	45SR050	5	-	55SS050	37	21	65SS050
55'							29	16	45SR055				28	14	65SS055
60'							22	11	45SR060				20	7	65SS060

100 MPH
3-Second Gust

100 MPH 3-Second Gust Wind Speed															
Height	25G			45G			45GSR			55G			65G		
	EPA		Part No.	EPA		Part No.	EPA		Part No.	EPA		Part No.	EPA		Part No.
	Exp.B	Exp.C		Exp.B	Exp.C		Exp.B	Exp.C		Exp.B	Exp.C		Exp.B	Exp.C	
10'	20.7	16.4	25SS010	47.4	39.5	45SS010	82	66	45SR010	78	63	55SS010	95	95	65SS010
20'	14.0	9.9	25SS020	23.2	16.9	45SS020	74	55	45SR020	43	32	55SS020	95	95	65SS020
30'	5.3	2.2	25SS030	9.7	4.8	45SS030	66	43	45SR030	24	14	55SS030	81	55	65SS030
35'	2.1	-	25SS035	5.1	0.7	45SS035	59	38	45SR035	17	8	55SS035	61	40	65SS035
40'				1.2	-	45SS040	46	30	45SR040	10	3	55SS040	47	29	65SS040
45'							35	22	45SR045	5	-	55SS045	35	20	65SS045
50'							27	15	45SR050				26	13	65SS050
55'							20	9	45SR055				17	6	65SS055
60'							13	4	45SR060				11	1	65SS060

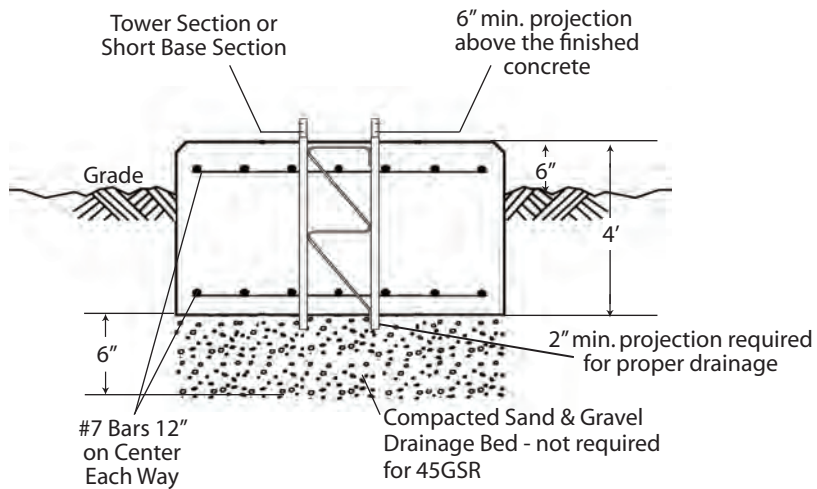
110 MPH
3-Second Gust

110 MPH 3-Second Gust Wind Speed															
Height	25G			45G			45GSR			55G			65G		
	EPA		Part No.	EPA		Part No.	EPA		Part No.	EPA		Part No.	EPA		Part No.
	Exp.B	Exp.C		Exp.B	Exp.C		Exp.B	Exp.C		Exp.B	Exp.C		Exp.B	Exp.C	
10'	16.5	12.7	25SS010	39.4	31.9	45SS010	67	53	45SR010	63	51	55SS010	95	95	65SS010
20'	10.6	7.2	25SS020	18.3	12.3	45SS020	59	43	45SR020	34	25	55SS020	95	81	65SS020
30'	3.1	0.4	25SS030	6.5	1.9	45SS030	51	32	45SR030	17	9	55SS030	65	43	65SS030
35'				1.7	-	45SS035	45	27	45SR035	11	4	55SS035	48	30	65SS035
40'							35	22	45SR040	5	-	55SS040	35	21	65SS040
45'							26	15	45SR045				25	13	65SS045
50'							19	9	45SR050				17	7	65SS050
55'							13	4	45SR055				10	-	65SS055
60'							7	-	45SR060				4	-	65SS060

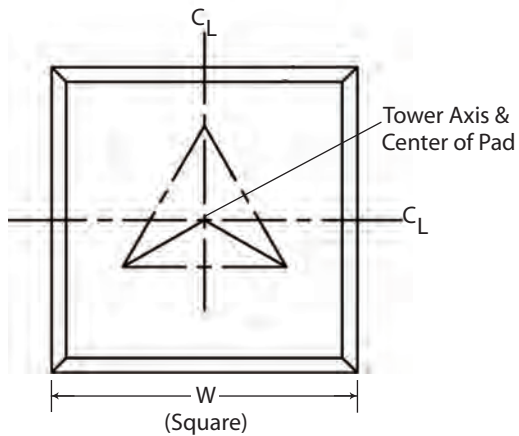
Note: Antenna areas, ft.², assume all round antenna members.

NOICE

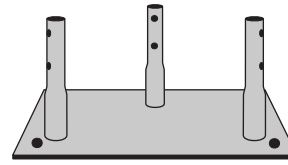
SELF-SUPPORTING G-SERIES FOUNDATIONS



ELEVATION VIEW
25G (shown), 45G & 55G
SELF-SUPPORTING TOWER FOUNDATION



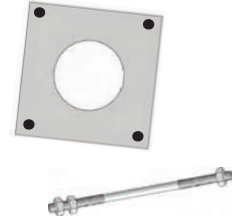
PLAN VIEW



**CONCRETE BASE PLATE
WITH ANCHORS**

25GSSB
FOR USE WITH SELF-SUPPORTING
25G TOWERS.

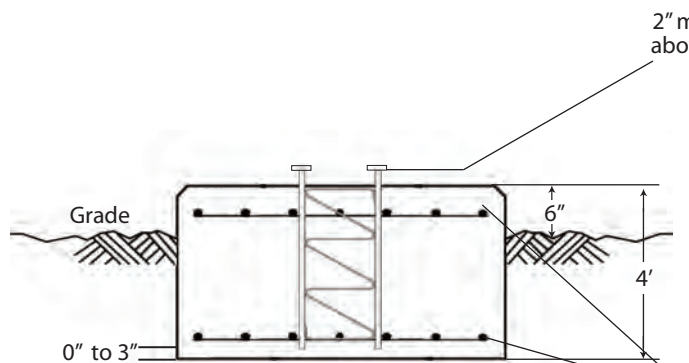
ALTERNATIVE TO USING SHORT BASE.
BASE BOLTS & TEMPLATE
MUST BE ORDERED SEPARATELY.



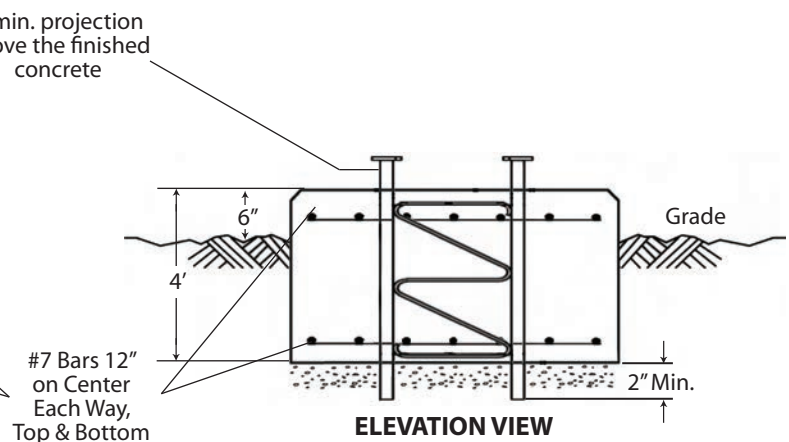
BASE BOLTS & TEMPLATE
KH8175A

FOR USE WITH 25GSSB
IN SELF-SUPPORTING 25G TOWER
APPLICATIONS. KIT INCLUDES (1)
TEMPLATE & (4) BASE BOLTS.

Tower	Mat Width (W)	Concrete Volume (Cu. Yds.)
25G	4' - 0"	2.4
45G	5' - 3"	4.1
55G	6' - 0"	5.3
45GSR 65G	7' - 9"	8.9



ELEVATION VIEW
45GSR
SELF-SUPPORTING TOWER FOUNDATION



ELEVATION VIEW
65G
SELF-SUPPORTING TOWER FOUNDATION



SELF-SUPPORTING G-SERIES DESIGN NOTES

1. Tower designs are in accordance with approved national standard ANSI/EIA-222-F and ANSI/TIA-222G, Structure Class I, Exposures B and C, Topographic Category I.
2. All towers must have "fixed" bases. Pinned bases may not be used.
3. Designs assume transmission lines symmetrically placed as follows:
 - 25G Tower - One 5/8" Line on each face (Total =3)
 - 45G Tower - One 7/8" Line and one 1/2" line on each face (Total = 3 @ 7/8" & 3 @ 1/2")
 - 55G & 65G Towers - Two 7/8" Lines on each face (Total =6)
4. Antennas and mounts assumed symmetrically placed at tower apex.
5. Rev F tabulated allowable antenna areas assume all round antenna members.
6. Allowable flat-plate antenna areas, based on EIA RS-222-C, may be obtained by multiplying Rev. F Antenna areas shown by 0.6.
7. Standard foundation designs are based on Rev. F normal soil and Rev. G presumptive clay soil parameters.

Refer to pages 147-153 for General Installation and Foundation Notes.

NOTES



A tall, slender lattice tower stands in the center of a cornfield. The tower is made of metal and has a cross-like structure at the top. The corn plants are in the foreground, and the sky is visible in the background. The entire image is overlaid with horizontal lines for notes.



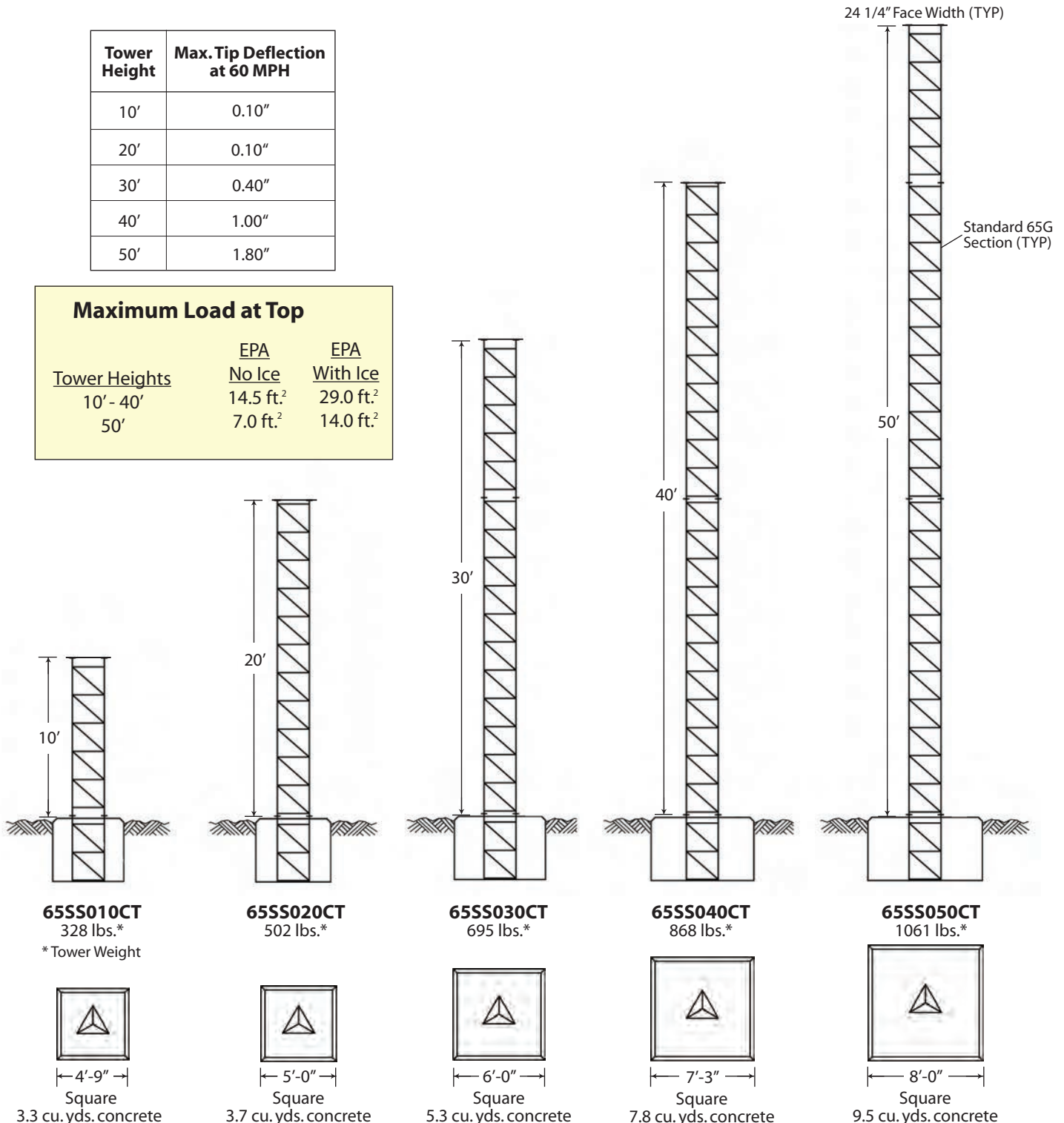
STANDARD 65G SELF-SUPPORTING CAMERA TOWERS (all-welded)

REV. G: 110 MPH 3-SEC GUST WIND SPEED (NO ICE),
40 MPH 3-SEC GUST WIND SPEED (3/4" ICE),
CLASS II, EXPOSURE C, TOPO CATEGORY 1
SEISMIC COEFFICIENT $S_s \leq 1.0$

Tower Height	Max. Tip Deflection at 60 MPH
10'	0.10"
20'	0.10"
30'	0.40"
40'	1.00"
50'	1.80"

Maximum Load at Top

Tower Heights	EPA No Ice	EPA With Ice
10' - 40'	14.5 ft. ²	29.0 ft. ²
50'	7.0 ft. ²	14.0 ft. ²

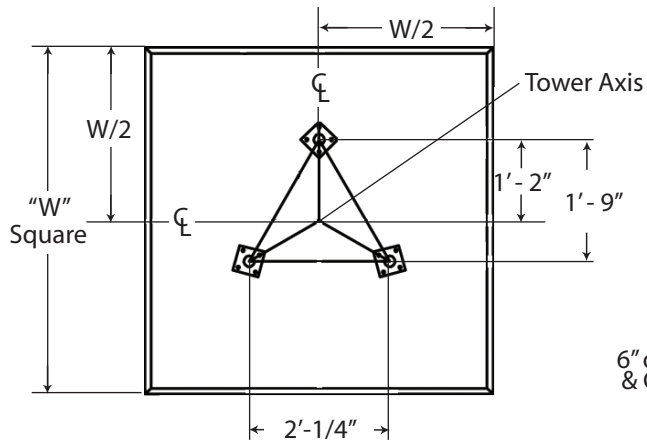


Includes short base section, tower sections, Rev G grounding material and 3/16" top mounting plate with attachment hardware.

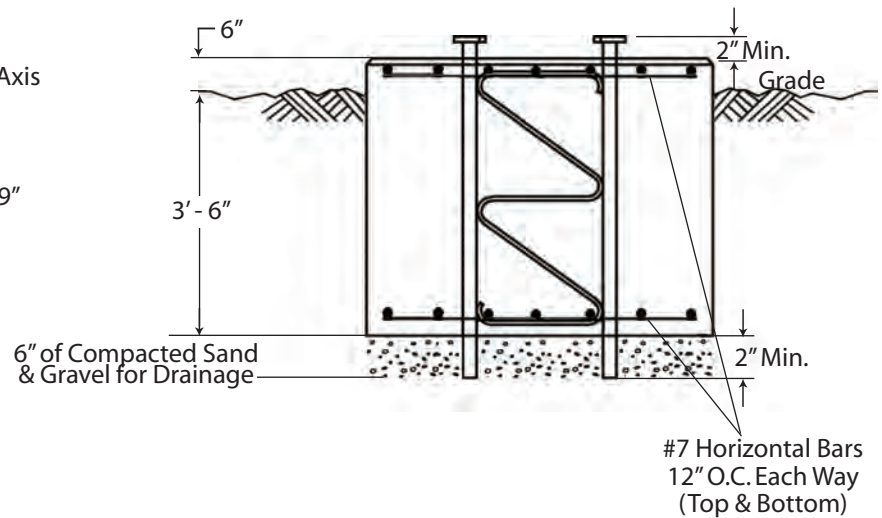
Per Rev. G requirements, any structure greater than 10' requires a climber safety device.

Please see page 173 for ordering information.

65G CAMERA TOWERS STANDARD FOUNDATION DETAILS



See tower elevation page for "W" dimension.



ACCESSORIES

 <p>ANTI-CLIMB PANELS VW915A ORDERED SEPARATELY</p>	 <p>CLIMBING HARNESS TTFBH-4D JOURNEYMAN HARNESS TTFBH-C/P PROFESSIONAL HARNESS</p>	 <p>SAFETY CABLE SLIDER WITH CARABINEER TT-WG-500-W/SMC</p>	<p>SAFETY CABLE SYSTEM TT05065 FITS ALL TOWER HEIGHTS</p>
---	---	--	--

GENERAL NOTES

1. Tower designs are in accordance with ANSI/TIA/222-G.
2. Camera and mount assumed symmetrically placed at tower top.
3. Tower design assumes one 7/8" line on each tower face.
4. Assembly drawings and standard foundation details are provided with the tower.
5. Standard foundation illustrated is for general information only and is based on Rev G presumptive clay soil parameters.

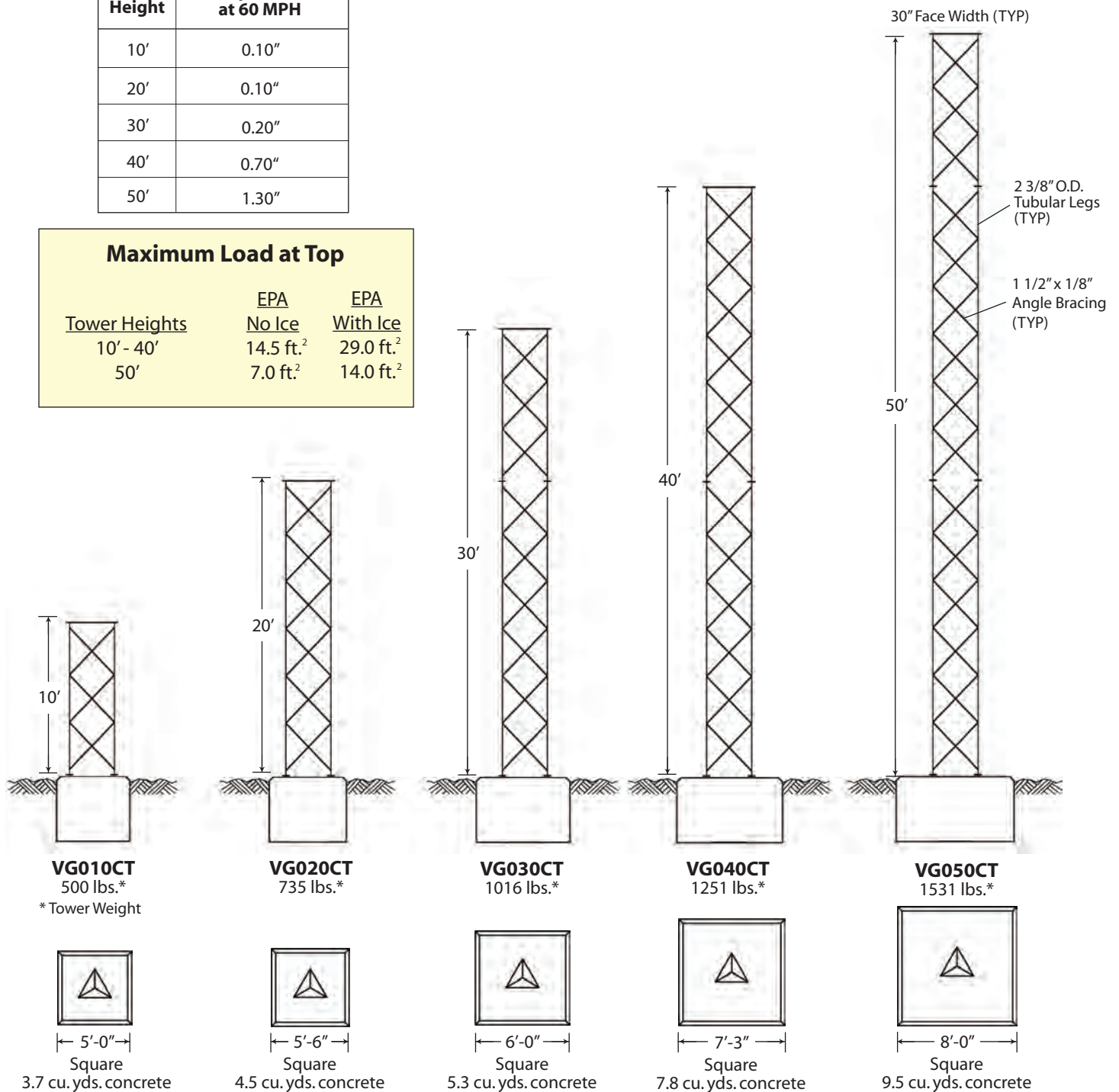
STANDARD VG SELF-SUPPORTING CAMERA TOWERS (field bolted)

REV. G: 110 MPH 3-SEC GUST WIND SPEED (NO ICE),
40 MPH 3-SEC GUST WIND SPEED (3/4" ICE),
CLASS II, EXPOSURE C, TOPO CATEGORY 1
SEISMIC COEFFICIENT $S_s \leq 1.0$

Tower Height	Max. Tip Deflection at 60 MPH
10'	0.10"
20'	0.10"
30'	0.20"
40'	0.70"
50'	1.30"

Maximum Load at Top

Tower Heights	EPA No Ice	EPA With Ice
10' - 40'	14.5 ft. ²	29.0 ft. ²
50'	7.0 ft. ²	14.0 ft. ²

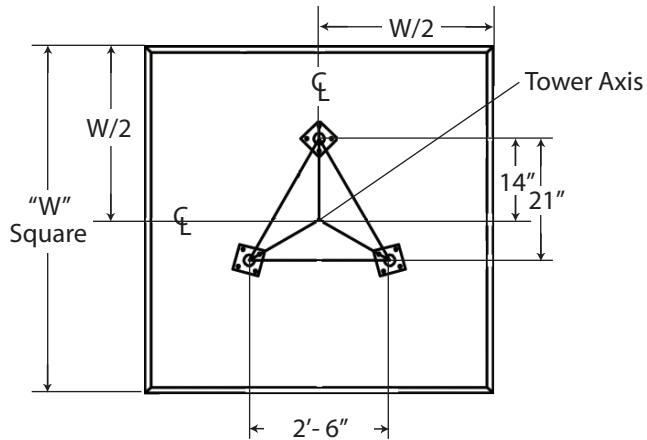


Includes anchor bolts, templates, tower sections, Rev G grounding material, 1/2" top mounting plate with attachment hardware and step bolts.

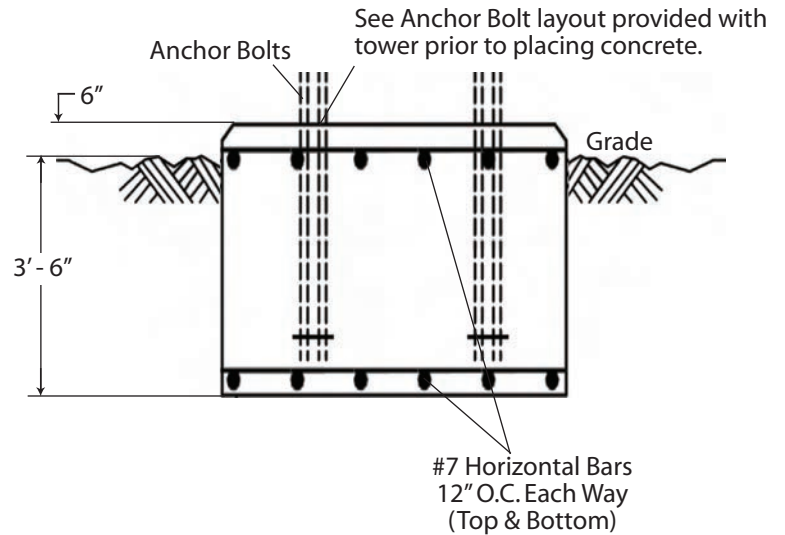
Per Rev. G requirements, any structure greater than 10' requires a climber safety device.

See page 175 for ordering information.

VG CAMERA TOWERS STANDARD FOUNDATION DETAILS



See tower elevation page for "W" dimensions.



ACCESSORIES

 <p>ANTI-CLIMB PANELS VW917A ORDERED SEPARATELY</p>	 <p>CLIMBING HARNESS TTFBH-4D JOURNEYMAN HARNESS TTFBH-C/P PROFESSIONAL HARNESS</p>	 <p>SAFETY CABLE SLIDER WITH CARABINEER TT-WG-500-W/SMC</p>	<p>SAFETY CABLE SYSTEM TT050SSL FITS ALL TOWER HEIGHTS</p>
---	---	--	---

GENERAL NOTES

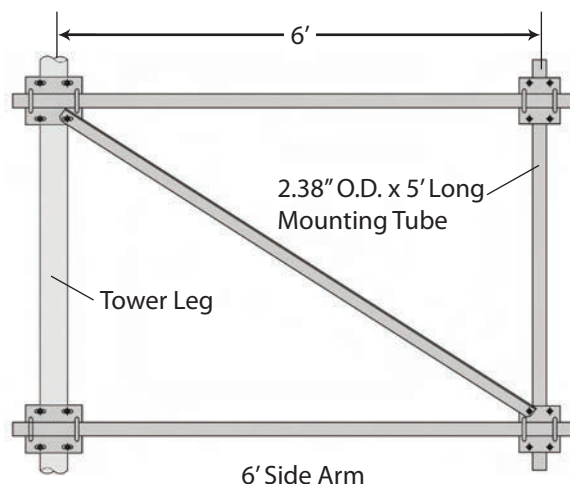
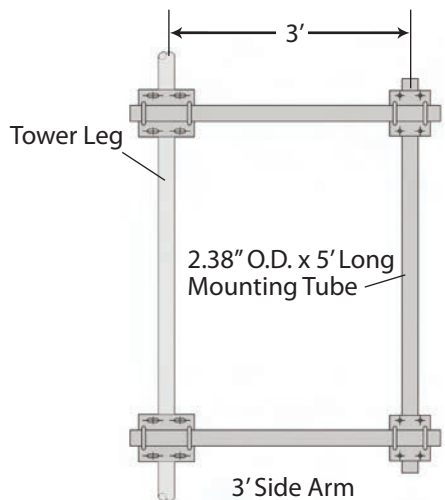
1. Tower designs are in accordance with ANSI/TIA/222-G.
2. Camera and mount assumed symmetrically placed at tower top.
3. Tower design assumes one 7/8" line on each tower face.
4. Assembly drawings and standard foundation details are provided with the tower.
5. Standard foundation illustrated is for general information only and is based on Rev G presumptive clay soil parameters.

Refer to pages 147-153 for Foundation General Notes.

TOWER & SITE ACCESSORIES



3' AND 6' SIDE ARMS, STRAIGHT/TAPERED TOWER SECTIONS



UNIVERSAL KITS

3' Side Arm	6' Side Arm	Tower Leg O.D.
SA324A	SA624A	2.38" - 4.50"
SA356A	SA656A	5.56" - 6.63"

LEG SPECIFIC KITS

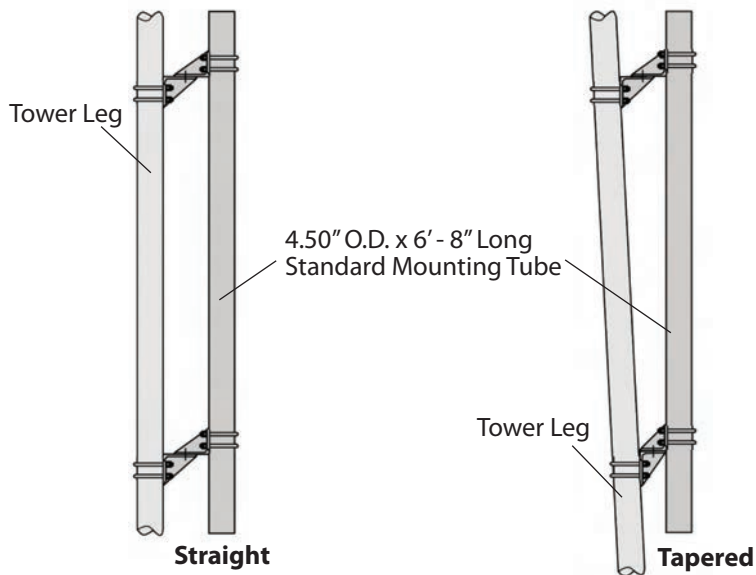
3' Side Arm	6' Side Arm	Tower Leg O.D.
SA32PL	SA62PL	2.38"
SA325PL	SA625PL	2.88"
SA33PL	SA63PL	3.50"
SA335PL	SA635PL	4.00"
SA34PL	SA64PL	4.50"
SA35PL	SA65PL	5.56"
SA36PL	SA66PL	6.63"
SA38PL	SA68PL	8.63"
SA310PL	SA610PL	10.75"
SA312PL	SA612PL	12.75"

Notes:

1. Standard tiebacks to the supporting structure are available for towers with 8.5 ft. or less face width.
2. To order tiebacks, include (1TB) for one or (2TB) for two after side arm assembly part number.
3. Custom side arms and tiebacks are available upon request.
4. Check for leg size to determine assembly number required.

All side arms are hot-dip galvanized and include all hardware to attach mount to tower.

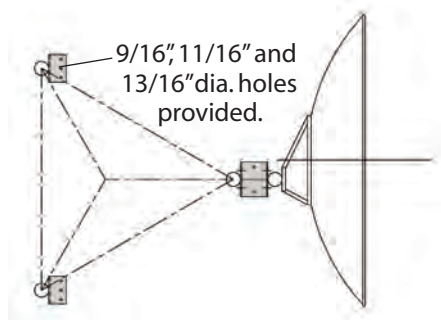
LEG DISH MOUNTS



Straight Leg	
Part No.	Description
S24HUM	Fits leg sizes 2.38" O.D. - 4.50" O.D.
S56HUM	Fits leg sizes 5.50" O.D. - 6.63" O.D.

Tapered Leg	
Part No.	Description
T24HUM	Fits leg sizes 2.38" O.D. - 4.50" O.D.
T56HUM	Fits leg sizes 5.50" O.D. - 6.63" O.D.

LEG TIE-BACK PLATE KIT

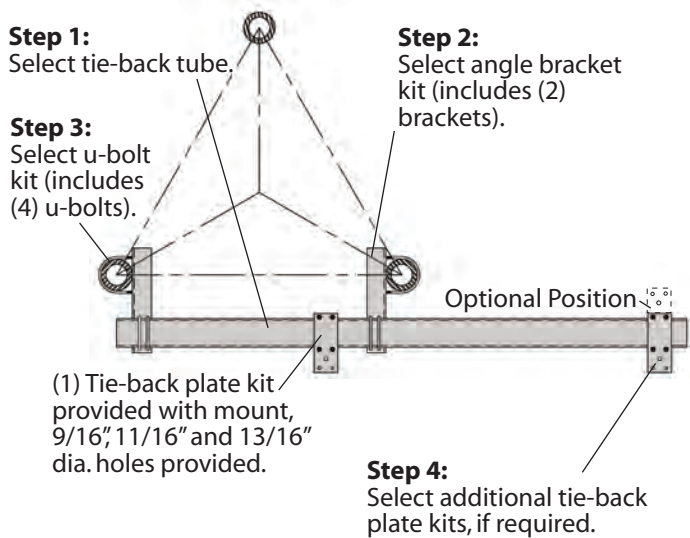


Part No.	Leg O.D.
VY1949A	2.38"
VY1950A	2.88"
VY1951A	3.50"
VY1952A	4.00"
VY1953A	4.50"
VY1954A	5.50"
VY1955A	6.63"

Kits include (1) clip with u-bolts. Some dishes require (2) tie-backs.

TIE-BACK ASSEMBLIES

[Follow steps 1-4 to order]



All mounts and tie-back assemblies are hot-dip galvanized and include all hardware to attach mount to tower.

Step 1. Select Tie-Back Tube Size & Length

TS 6" x 6" x 3/16"	
Part No.	Length
TMT6LL05	5'
TMT6LL06	6'
TMT6LL08	8'
TMT6LL10	10'
TMT6LL12	12'

TS 6" x 6" x 1/4"	
Part No.	Length
TMT6L05	5'
TMT6L06	6'
TMT6L08	8'
TMT6L10	10'
TMT6L12	12'

TS 6" x 6" x 3/8"	
Part No.	Length
TMT6H05	5'
TMT6H06	6'
TMT6H08	8'
TMT6H10	10'
TMT6H12	12'

Step 2. Select Angle Bracket Kit

Based on leg O.D.

4" Tube	
Part No.	Leg O.D.
VY2911A	1.90" - 5.56"
VY2912A	6.63" - 8.63"

6" Tube	
Part No.	Leg O.D.
VY4457A	1.90" - 5.56"
VY4458A	6.63" - 8.63"
VY4459A	10.75" - 12.75"

Step 3. Select U-Bolt Kit

Based on leg O.D.

Part No.	Leg O.D.
JR83AW4	1.90" - 2.38"
JR84AW4	2.88"
JR88AW4	3.50"
JR89AW4	4.00"
JR85AW4	4.50"
JR86AW4	5.56"
JR87AW4	6.63"
JR90SAW4	8.63"
JR110AW4	10.75"
JR120AW4	12.75"

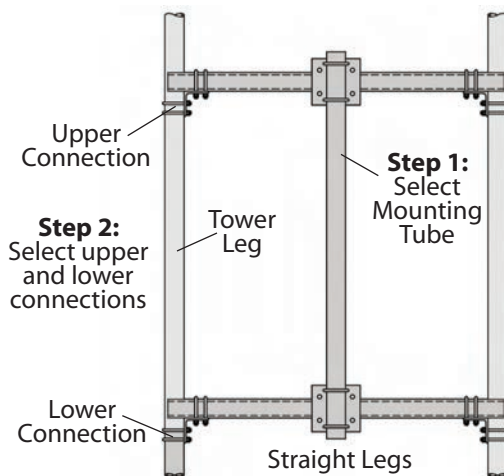
Step 4. Select Additional Tie-Back Plate

Kits (if required).

Part No.	Tube Size
AP34T4	4"
AP6T2	6"

FACE DISH MOUNTS

[FOLLOW STEPS 1-3 TO ORDER]



ORDERING INFORMATION:

Step 1. Select Mounting Tube Length (4.50" O.D. x 0.237" wall)

Straight Leg	
Part No.	Tube Description
DMF4T050S	4.50" O.D. x 5'
DMF4T068S	4.50" O.D. x 6.67'
DMF4T100S	4.50" O.D. x 10'

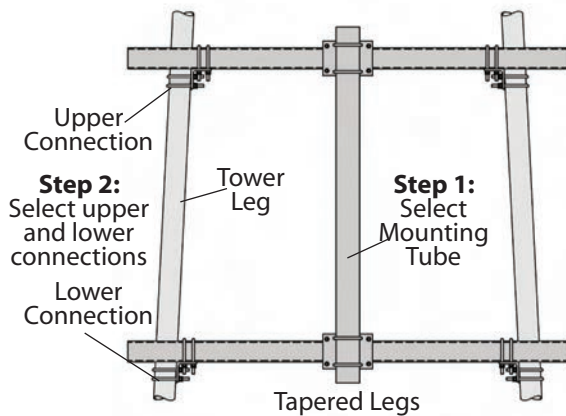
Tapered Leg	
Part No.	Tube Description
DMF4T050T	4.50" O.D. x 5'
DMF4T068T	4.50" O.D. x 6.67'
DMF4T100T	4.50" O.D. x 10'

Step 2. Select Upper and Lower Connections

Because leg O.D. may be different at upper and lower connections, select one part number for upper and one part number for lower.

Straight or Tapered Legs	
Part No.	Leg O.D.
JR83AW4	1.90" - 2.38"
JR84AW4	2.88"
JR88AW4	3.50"
JR89AW4	4.00"
JR85AW4	4.50"
JR86AW4	5.56"

(2) Brackets are included with each kit.

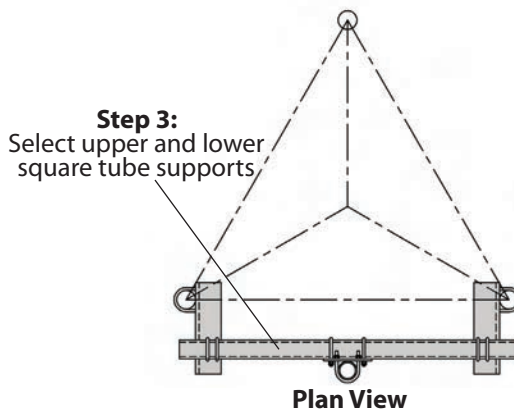
**Step 3. Select Square Tube Supports**

Based on required strength and length. Select (1) part number for upper support and (1) part number for lower support.

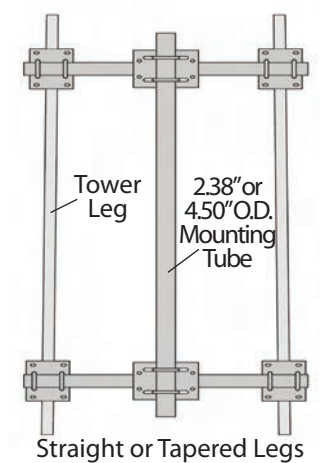
4" x 4" x 11GA	
Part No.	Length
TMT4L05	5'
TMT4L06	6'
TMT4L08	8'
TMT4L10	10'

4" x 4" x .25"	
Part No.	Length
TMT4H05	5'
TMT4H06	6'
TMT4H08	8'
TMT4H10	10'

4" x 4" x .375"	
Part No.	Length
TMT4XH05	5'
TMT4XH06	6'
TMT4XH08	8'
TMT4XH10	10'



FACE MOUNT KITS



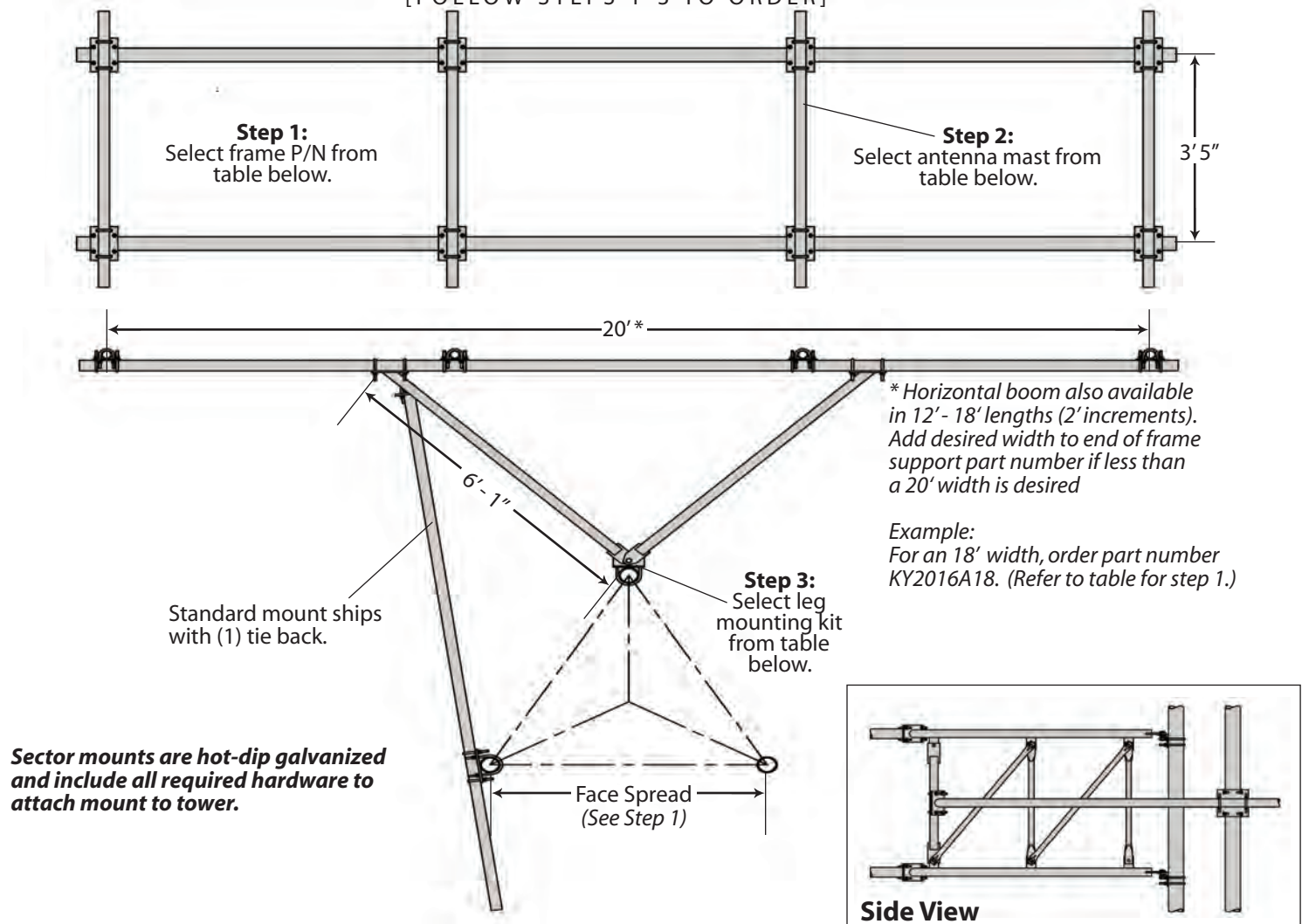
LIGHTWEIGHT FACE MOUNT KITS
FITS MIN. FACE WIDTH 18" TO MAX. FACE WIDTH 30",
LEG SIZES 1" TO 1 3/4" O.D.

Part No.	Mounting Tube
FM35NU2	2.38" O.D. x 0.154" wall x 5' Long
FM35NU4	4.50" O.D. x 0.237" wall x 5' Long

Face dish mounts are hot-dip galvanized and include all required hardware to attach mount to tower.

SECTOR MOUNT

[FOLLOW STEPS 1-3 TO ORDER]



SECTOR MOUNT ORDERING INFORMATION

(Qty. is for (1) sector only)

Step 1. Select frame P/N based on tower face spread.

Frame Support Assembly Straight Leg	
Part No.	Face Spread
KY2016A	8' Max.
KY1993A	8' Min. - 14' Max.

Frame Support Assembly Tapered Leg	
Part No.	Face Spread
KY2006A	8' Max.
KY2015A	8' Min. - 14' Max.

Step 2. Select antenna mast kits (2 min.) (1) Kit per mast tube

Antenna Mast Kit	
Part No.	Mast
VY4935A	2.38" O.D. (0.154" wall) x 5' Long
VY4935A8	2.38" O.D. (0.218" wall) x 8' Long

Step 3. Select leg mounting kit.

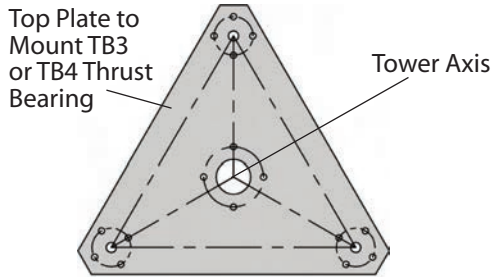
Leg Mounting Kit Straight Leg	
Part No.	Leg O.D.
KY1994A	2.38" O.D.
KY1995A	2.88" O.D.
KY1996A	3.50" O.D.
KY1997A	4.00" O.D.
KY1998A	4.50" O.D.
KY1999A	5.56" O.D.
KY2000A	6.63" O.D.
KY2001A	8.63" O.D.

Leg Mounting Kit Tapered Leg	
Part No.	Leg O.D.
KY2007A	2.38" O.D.
KY2008A	2.88" O.D.
KY2009A	3.50" O.D.
KY2010A	4.00" O.D.
KY2011A	4.50" O.D.
KY2012A	5.56" O.D.
KY2013A	6.63" O.D.
KY2014A	8.63" O.D.

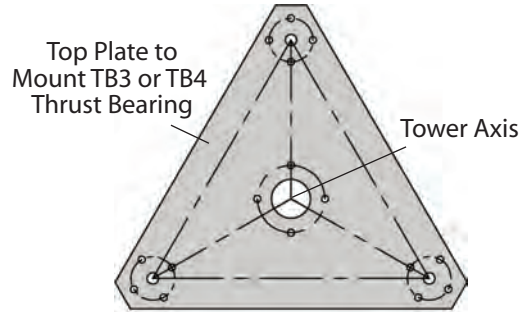
ROTOR PLATE ASSEMBLIES FOR ROHN STANDARD SELF-SUPPORTING TOWERS

Rotor plate accessories are hot-dip galvanized and include all required hardware to attach assemblies to tower.

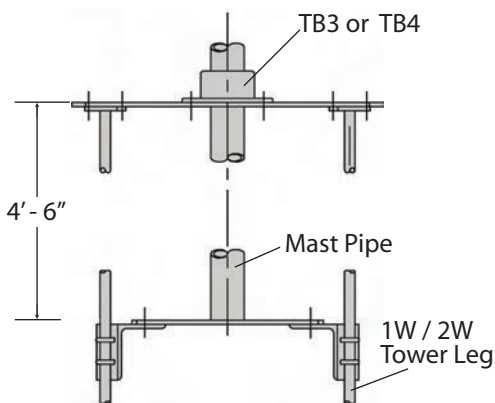
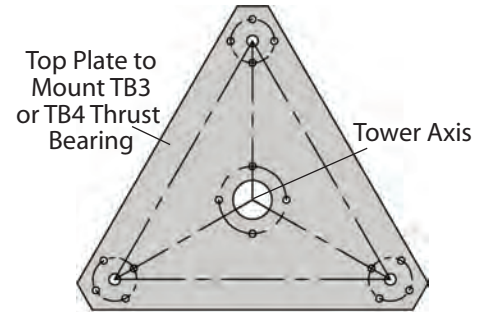
1W / 2W



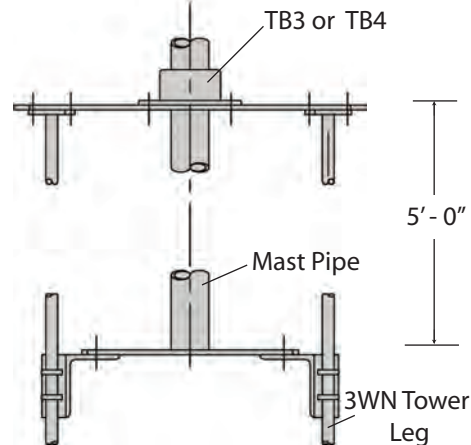
3WN



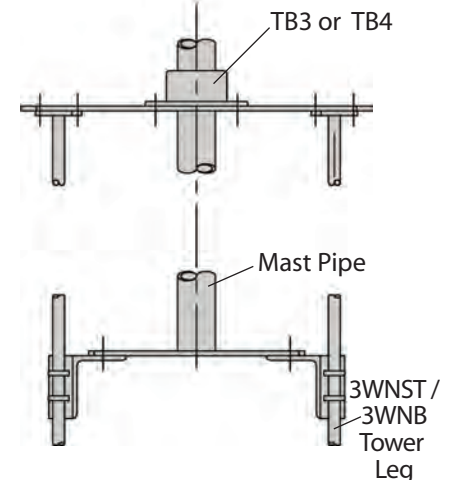
3WNST / 3WNB



P/N: VU479A



P/N: VU474A



P/N: VU140

NOTES:

1. All plates are 3/8" thick
2. Rotor top plates are pre-drilled to fit a variety of rotors.
3. Rotor plate assembly includes top plate and rotor plate.
4. Mast pipe, rotor and thrust bearing must be ordered separately.

SAFETY & CLIMBING G-SERIES TOWERS | POLES

SAFETY CABLE - TOWERS

Description	Part Number
50' - 25G tower	TT05025
100' - 25G tower	TT10025
150' - 25G tower	TT15025
200' - 25G tower	TT20025

Description	Part Number
50' - 45G/55G tower	TT0504555
100' - 45G/55G tower	TT1004555
150' - 45G/55G tower	TT1504555
200' - 45G/55G tower	TT2004555
250' - 45G/55G tower	TT2504555
300' - 45G/55G tower	TT3004555
350' - 45G/55G tower	TT3504555

Description	Part Number
50' - 65G tower	TT05065
100' - 65G tower	TT10065
150' - 65G tower	TT15065
200' - 65G tower	TT20065
250' - 65G tower	TT25065
300' - 65G tower	TT30065
350' - 65G tower	TT35065
400' - 65G tower	TT40065
450' - 65G tower	TT45065
500' - 65G tower	TT50065

SAFETY CABLE - POLES

Description	Part No.	Cable (ft.)	# Guides
25' - Pole	TT025TSP	35	1
50' - Pole	TT050TSP	60	2
100' - Pole	TT100TSP	110	4
150' - Pole	TT150TSP	160	6
200' - Pole	TT200TSP	210	8
250' - Pole	TT250TSP	260	10
Step Anchor Bracket	TTSBAB	-	-
Additional 4" Stud Cable Guide	TT115317-4	-	-

HARNESS & SLIDER

Description	Part Number
4-D Ring Climbing Harness	TTFBH-4D
Professional Harness	TTFBH-C/P
Safety Cable Slider	TT-WG-500-W/SMC



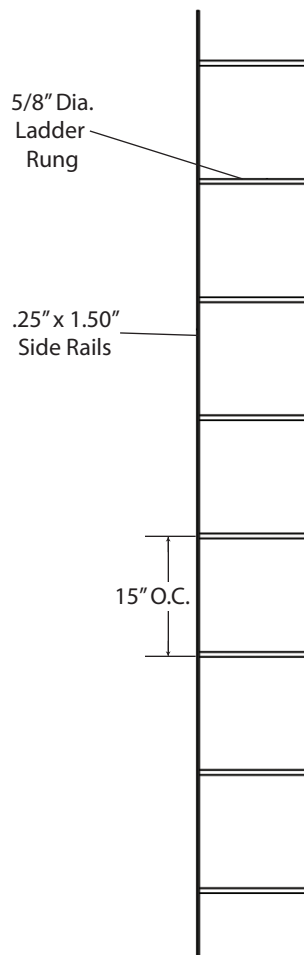
Climbing Harness

Safety Cable Slider
with Carabiner

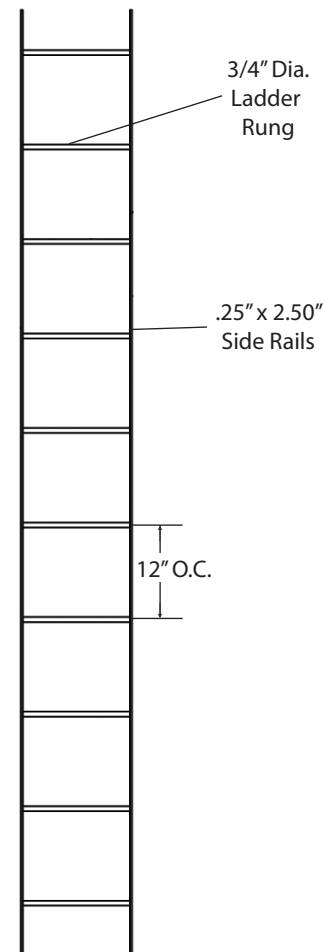
SAFETY CABLE SYSTEM FOR CLIMBING LADDERS - TOWERS

Description	Part Number
50' Climbing Ladder	TT050LAD
100' Climbing Ladder	TT100LAD
150' Climbing Ladder	TT150LAD
200' Climbing Ladder	TT200LAD
250' Climbing Ladder	TT250LAD
300' Climbing Ladder	TT300LAD

CLIMBING LADDERS



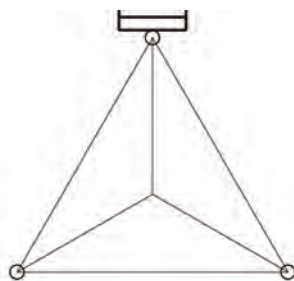
STANDARD LADDER
NL10 - 10' ladder
NL20 - 20' ladder



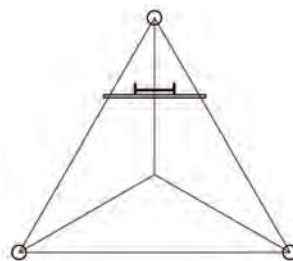
HEAVY DUTY LADDER
HL161A - 10' ladder
HL162A - 20' ladder

Part number for ladder section only. Mounting kit must be ordered separately.

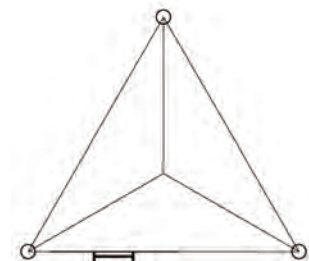
CONFIGURATIONS



Leg Mounted



Inside Corner Mounted

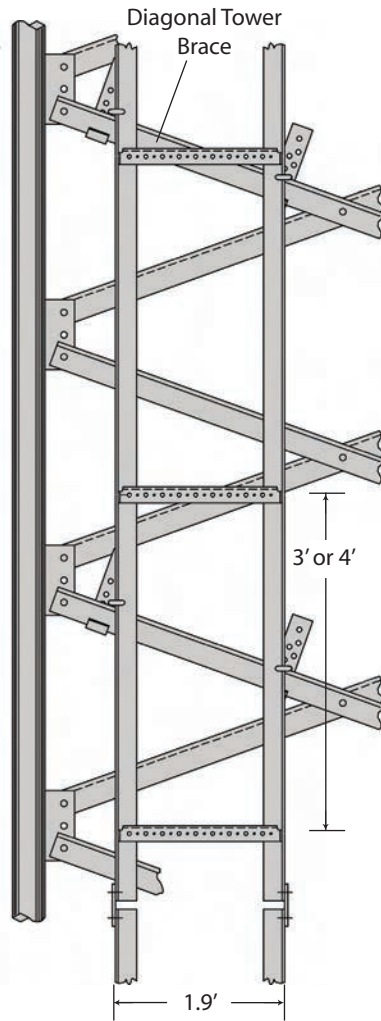


Face Mounted

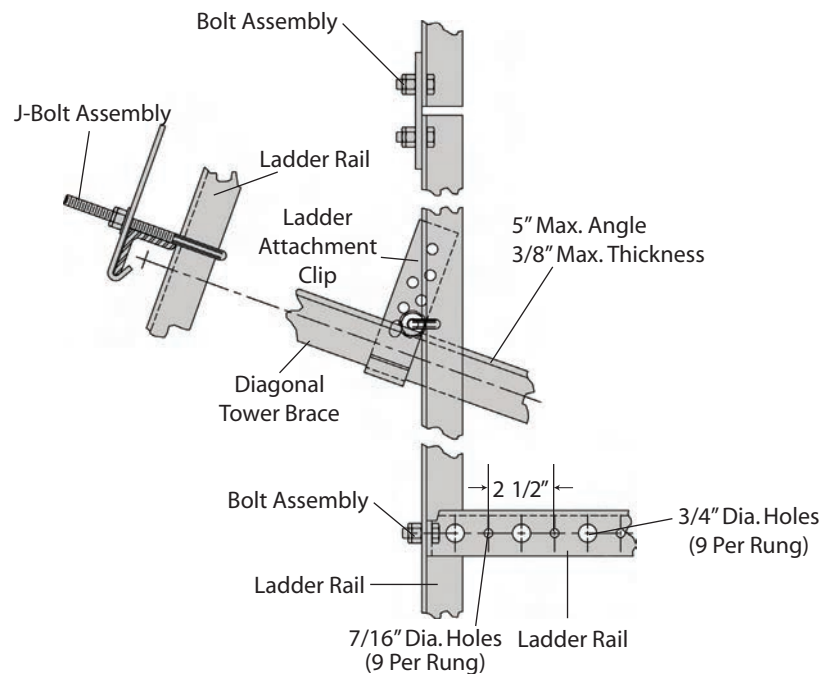
Notes:

1. Ladders are available for most ROHN standard tower sections.
2. All ROHN climbing devices are intended for use by professional (competent climbers) only.
3. Specify ladder type and configuration when ordering.
4. Custom configurations and mounting options available.
5. A safety climb system is required for all structures greater than 10' in height.

WAVEGUIDE LADDER FACE MOUNTED 9-HOLE



Waveguide Ladder Elevation



ORDERING INFORMATION

WL20F93KD

20' Long Waveguide Ladder (3' rung spacing)

WL20F94KD

20' Long Waveguide Ladder (4' rung spacing)

WL10F93KD

10' Long Waveguide Ladder (3' rung spacing)

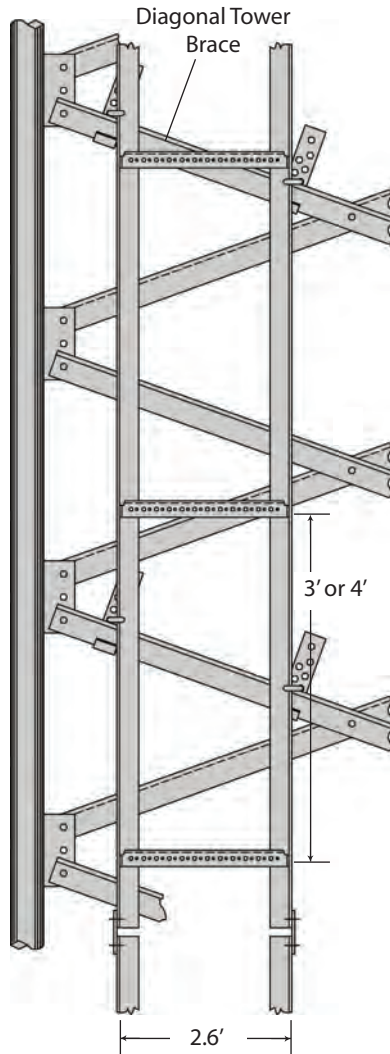
WL10F94KD

10' Long Waveguide Ladder (4' rung spacing)

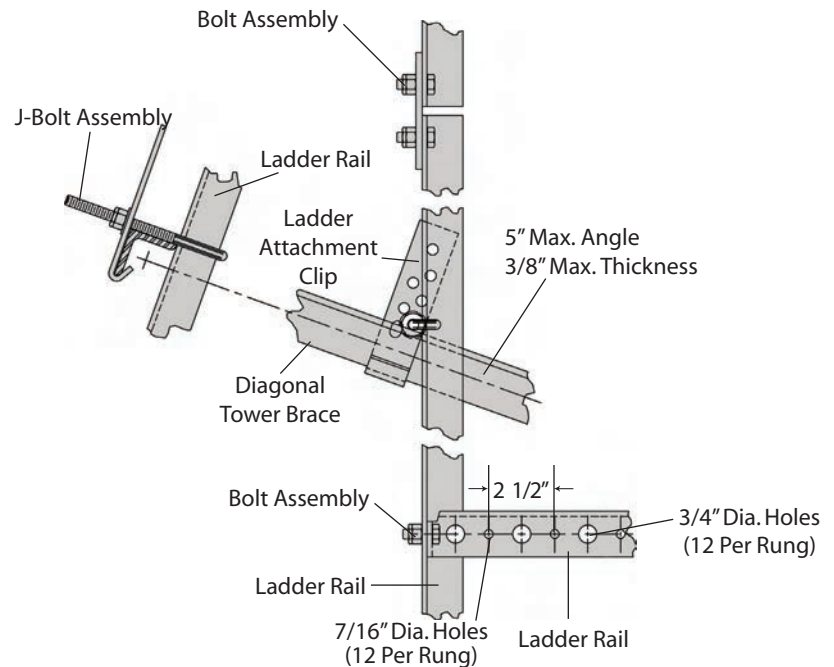
Notes:

1. Waveguide ladder may be moved horizontally for the proper alignment.
2. Waveguide ladder may be mounted inside or outside of tower as required.

WAVEGUIDE LADDER FACE MOUNTED 12-HOLE



Waveguide Ladder Elevation



ORDERING INFORMATION

WL20F123KD

20' Long Waveguide Ladder (3' rung spacing)

WL20F124KD

20' Long Waveguide Ladder (4' rung spacing)

WL10F123KD

10' Long Waveguide Ladder (3' rung spacing)

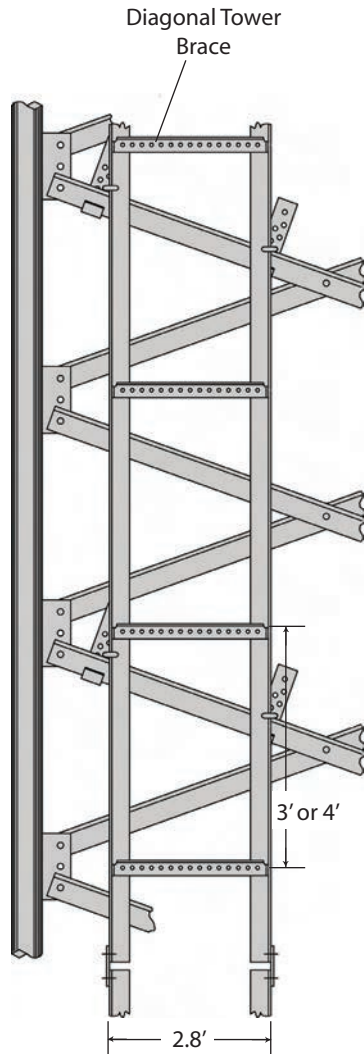
WL10F124KD

10' Long Waveguide Ladder (4' rung spacing)

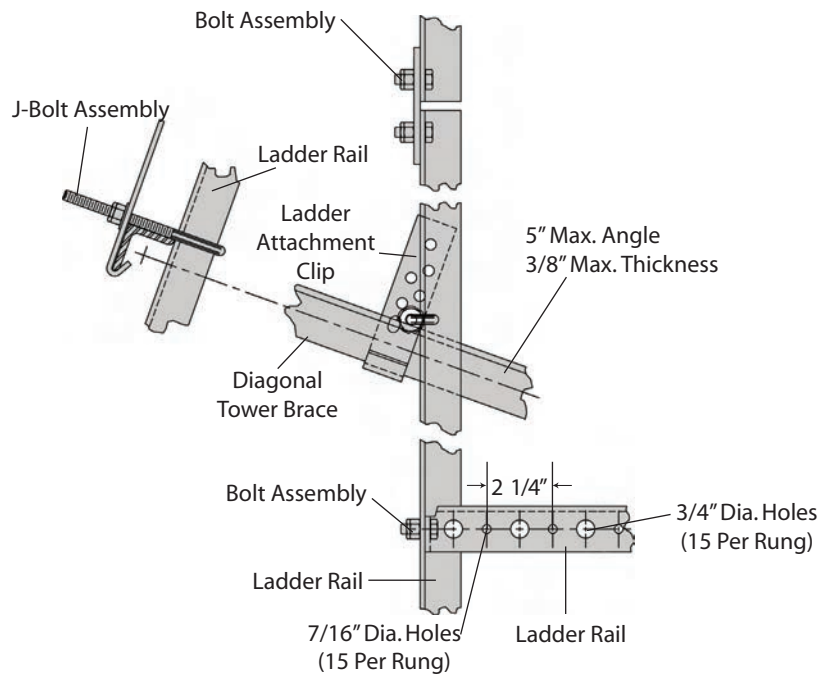
Notes:

1. Waveguide ladder may be moved horizontally for the proper alignment.
2. Waveguide ladder may be mounted inside or outside of tower as required.

WAVEGUIDE LADDER FACE MOUNTED 15-HOLE



Waveguide Ladder Elevation



ORDERING INFORMATION

WL20F153KD

20' Long Waveguide Ladder (3' rung spacing)

WL20F154KD

20' Long Waveguide Ladder (4' rung spacing)

WL10F153KD

10' Long Waveguide Ladder (3' rung spacing)

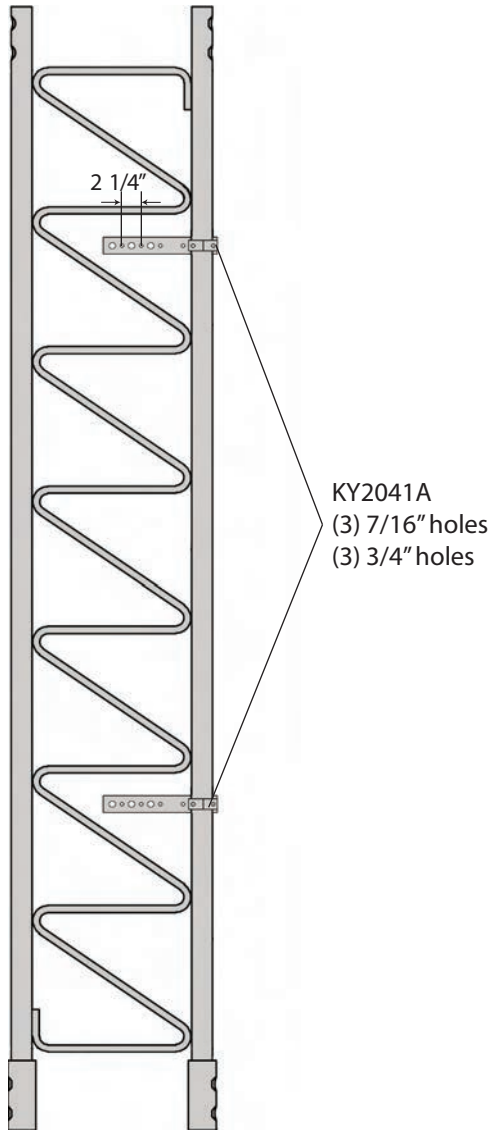
WL10F154KD

10' Long Waveguide Ladder (4' rung spacing)

Notes:

1. Waveguide ladder may be moved horizontally for the proper alignment.
2. Waveguide ladder may be mounted inside or outside of tower as required.

WAVEGUIDE BRACKETS 3-HOLE



Waveguide Bracket Elevation

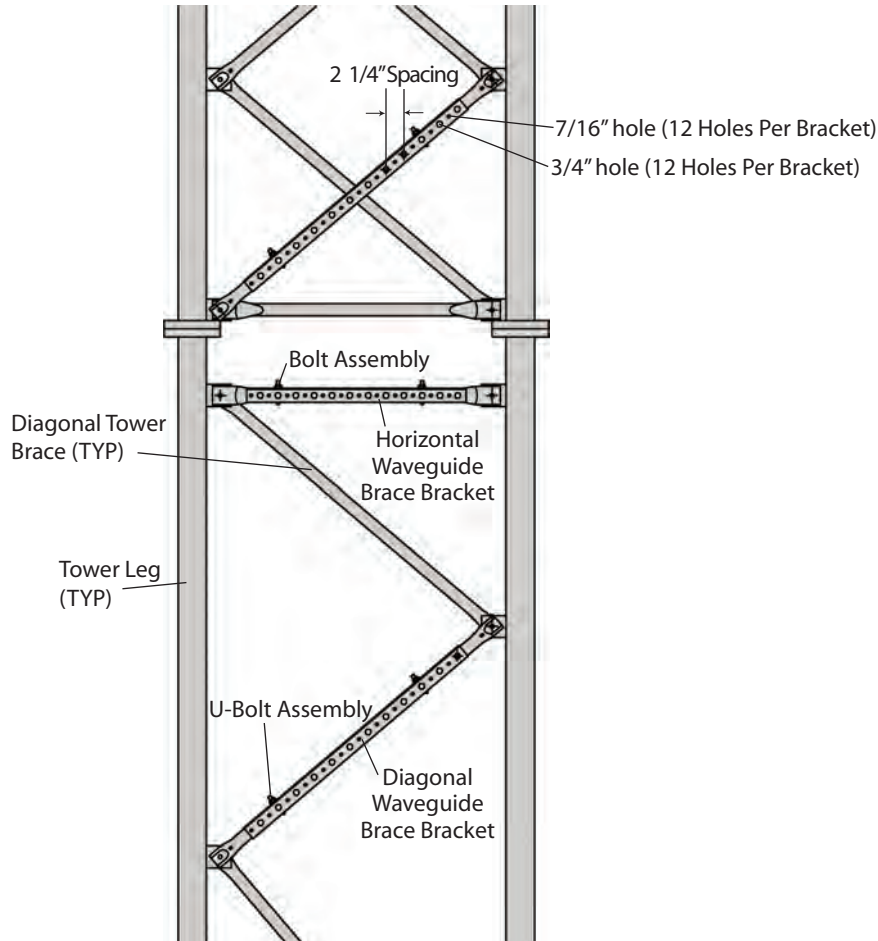
ORDERING INFORMATION

KY2041A

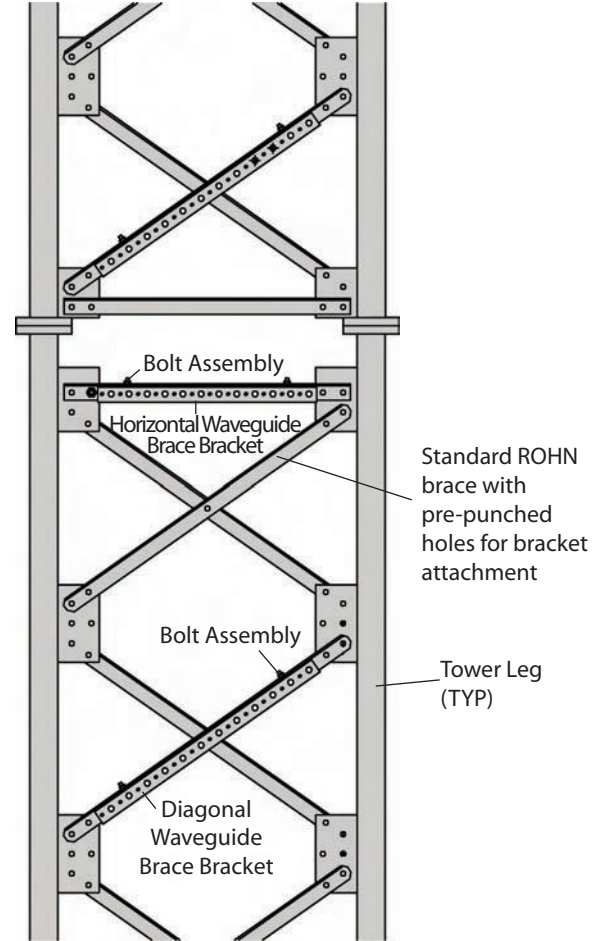
Notes:

1. Kit includes (1) bracket with required mounting hardware.
2. Assembly used for mounting to 3/4" - 2 1/4" O.D. legs.
3. (5) KY2041A required per 20' of tower for 4' O.C. spacing.

WAVEGUIDE BRACKETS 8-HOLE (80 SERIES)



Tubular Bracing
1 1/2" Diameter



Angle Bracing
1 3/4" x 3/16"
2" x 1/4"

ORDERING INFORMATION

WAF801211

(Horizontals)

Order 1 per 15' or 20' section

WAF801212

(Diagonals)

Order 3 per 15' section

Order 4 per 20' section

ORDERING INFORMATION

WAF801213

(Horizontals)

Order 1 per 15' or 20' section

WAF801214

(2" Diagonals)

Order 3 per 15' section

Order 4 per 20' section

WAF801215

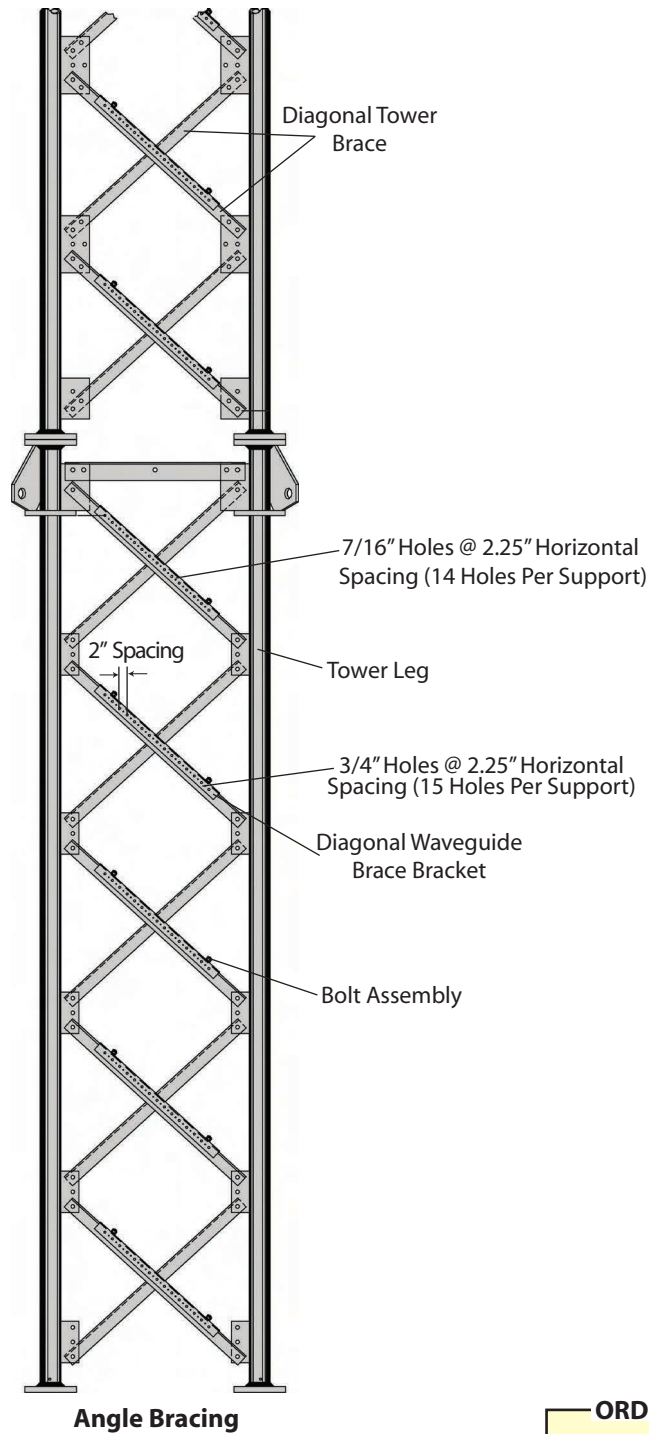
(1 3/4" Diagonals)

Order 3 per 15' section

Order 4 per 20' section

NOTE: These assemblies may be mounted on the inside or outside face of the tower.

WAVEGUIDE BRACKETS 15-HOLE (90 SERIES)



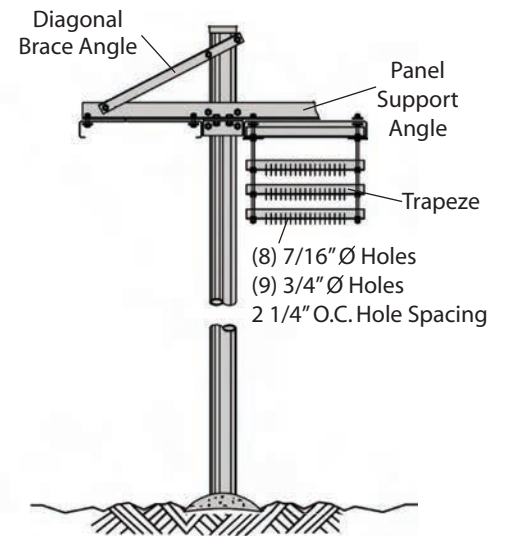
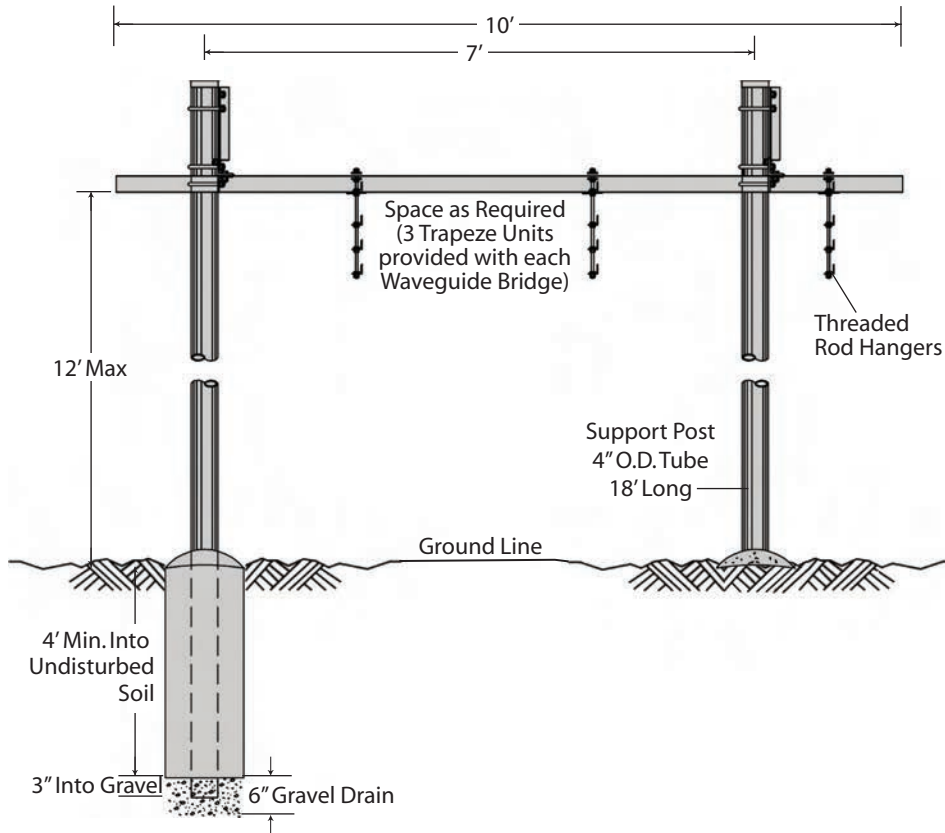
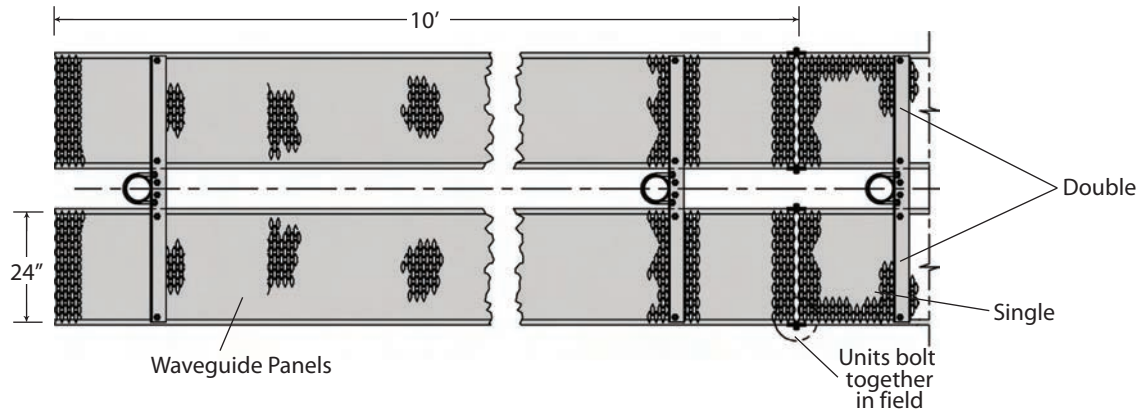
Angle Bracing

ORDERING INFORMATION

WAF901521
Angle Waveguide Support
& Bolt Assembly

Order (1) assembly part number WAF901521 for each diagonal brace bay that waveguides cross in a section. (Ex. (5) WAF901521 for a 20' tower section, (3) WAF901521 for a 12' tower section, etc.). This assembly may be mounted on outside of tower as shown or on inside as required.

HEAVY DUTY WAVEGUIDE BRIDGE 10' SINGLE / DOUBLE



Notes:

1. Waveguide bridge is not designed to support personnel or equipment.

ORDERING INFORMATION

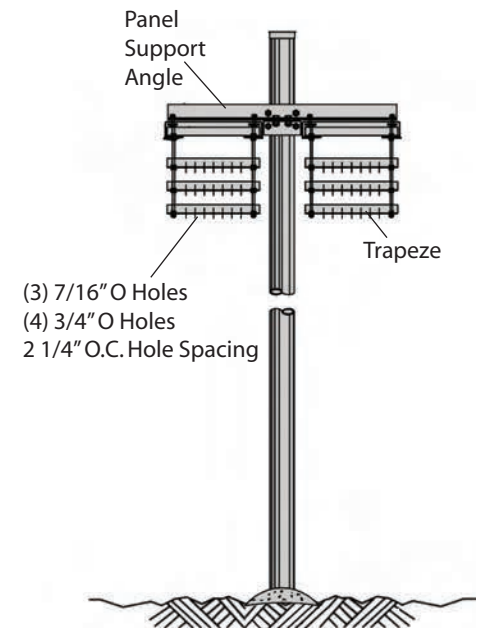
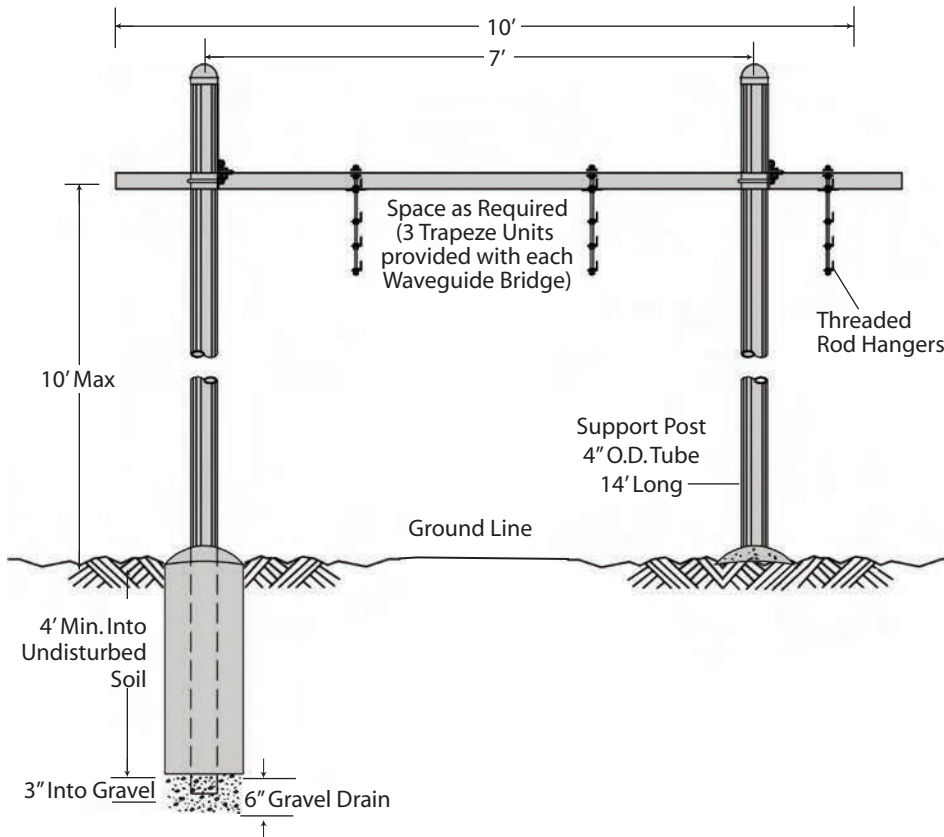
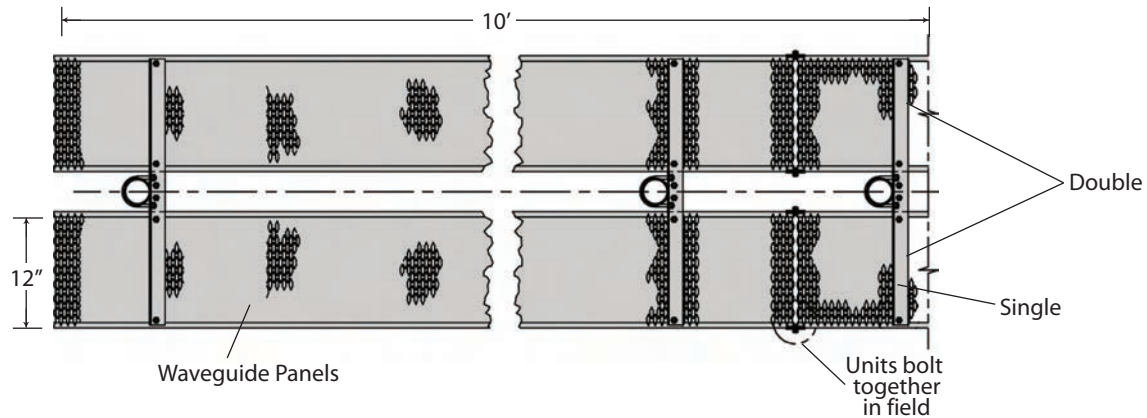
WGBS2410

Single Wide Bridge
2 Posts, 1 Bridge Panel (24"W x 10' L)
(3) Trapeze Units

WGBD2410

Double Bridge
2 Posts, 2 Bridge Panels (24"W x 10' L, each)
(6) Trapeze Units

LIGHT DUTY WAVEGUIDE BRIDGE 10' SINGLE / DOUBLE



Notes:

1. Waveguide bridge is not designed to support personnel or equipment.

ORDERING INFORMATION

WGBS121014

Single Wide Bridge
2 Posts, 1 Bridge Panel (12"W x 10'L)
(3) Trapeze Units

WGBD121014

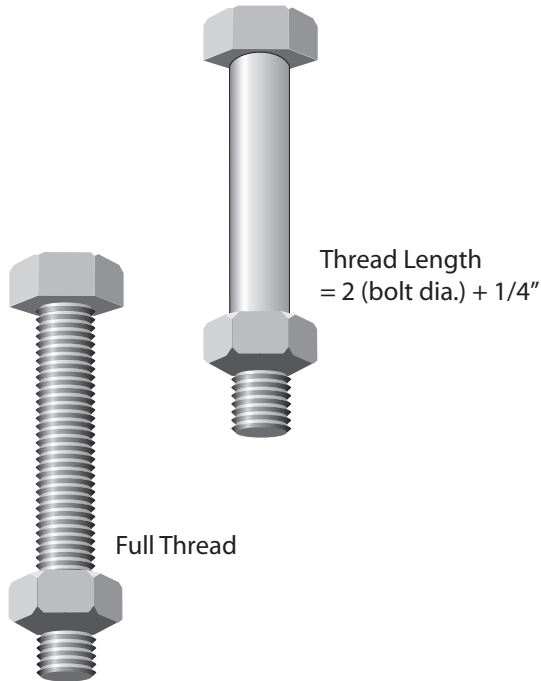
Double Bridge
2 Posts, 2 Bridge Panels (12"W x 10'L, each)
(6) Trapeze Units

HARDWARE





NUTS, BOLTS & WASHERS

GRADE 5 BOLT ASSEMBLIES, GALVANIZED
[HEX BOLTS, NUT & LOCKING DEVICE]

Dia. x Length (inches)	Assembly Part No.	Weight (lbs./100pcs)
5/16 x 2-3/8	210003GA	7/100
3/8 x 1-1/4	210005GA	10/100
3/8 x 1-1/2	210008GA	10/100
3/8 x 2	210009GA	12/100
3/8 x 2-1/2	210011GA	13/100
3/8 x 2-1/2 (Full Thread)	210176GA	13/100
3/8 x 4	210014GA	18/100
3/8 x 4 (Full Thread)	210013GA	18/100
7/16 x 2-1/2	210016GA	17/100
5/8 x 1-3/4	210146GA	35/100
5/8 x 2	210140GA	38/100
5/8 x 3-1/4	210036GA	51/100
5/8 x 3-3/4	210038GA	53/100
3/4 x 4-1/2	210091GA	91/100
7/8 x 3	210062GA	103/100

*Pal nuts included with assembly P/N shown.
See table below for other nut locking devices.*

NUT LOCKING DEVICE OPTIONS
[ADD SUFFIX AFTER BOLT ASSEMBLY PART NUMBER]

Suffix	Nut Locking Device
-	Pal Nut
AN	Anco Nut
TLN	Tri-Loc Nut
LW	Split Ring Washer

Example:

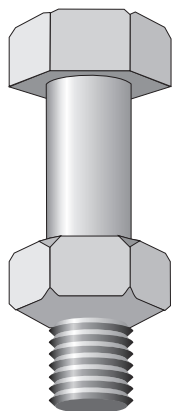
*For 3/8" x 1-1/2" bolt assembly with a split ring lock washer used for a nut locking device, in place of a pal nut, order part number: **210011GALW***

NOTE: To order bolts or other hardware in this catalog without nuts and nut locking devices, remove the "A" from the end of the assembly part number.

NUTS, BOLTS & WASHERS

STRUCTURAL BOLT ASSEMBLIES, 120 KSI TENSILE
STRENGTH, GALVANIZED

[HEAVY HEX BOLTS, NUTS & NUT LOCKING DEVICE]



THREAD LENGTHS

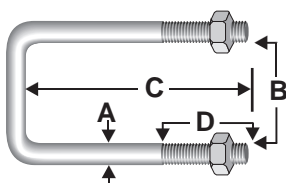
Bolt Diameter	Thread Length (inches)
1/2"	1
5/8"	1.25
3/4"	1.38
7/8"	1.5
1"	1.75
1-1/8"	2
1-1/4"	2
1-3/8"	2.25
1-1/2"	2.25

Dia. x Length (inches)	Assy. Part No.	Weight (lbs/100pcs)
1/2 x 1-1/4	210017GA	21/100
1/2 x 1-1/2	210018GA	22/100
1/2 x 1-3/4	210019GA	24/100
1/2 x 2	210020GA	25/100
5/8 x 1-1/2	210029GA	34/100
5/8 x 1-3/4	210030GA	36/100
5/8 x 2	210031GA	68/100
5/8 x 2-1/4	210032GA	42/100
5/8 x 2-1/2	210033GA	43/100
5/8 x 3-1/4	210072GA	45/100
3/4 x 1-3/4	210046GA	58/100
3/4 x 2	210047GA	61/100
3/4 x 2-1/4	210048GA	62/100
3/4 x 2-1/2	210048GA	66/100
3/4 x 2-3/4	210050GA	70/100
3/4 x 4-1/2	210057GA	91/100
3/4 x 5	210058GA	94/100
3/4 x 5-1/2	210059GA	104/100
7/8 x 2-1/4	210061GA	94/100
7/8 x 3-1/2	210063GA	113/100
1 x 4-1/4	210069GA	172/100
1 x 5-1/2	210070GA	197/100
1 x 6	210164GA	204/100

Pal nuts included with assembly P/N shown.

Add suffix from page 288 for other nut locking device.

U-BOLTS, SQUARE BEND, GALVANIZED



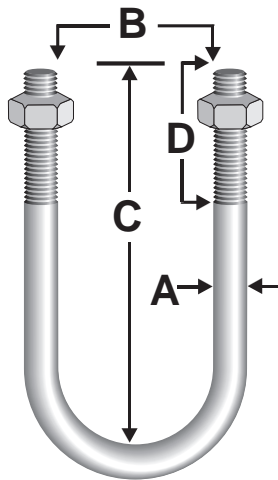
Dimensions (inches)				Assy. Part No.	Weight (lbs/100pcs)
A	B	C	D		
1/2	3-1/4	4-3/8	1-1/4	JR811A	73/100
1/2	4-1/4	5-5/16	1-1/4	JR812A	87/100
1/2	4-1/4	5-13/16	1-3/4	JR812LA	91/100
1/2	6-1/4	7-13/16	1-3/4	JR815A	119/100
3/4	6-1/4	8-1/2	2-1/2	JR12685SQA	277/100

Pal nuts included with assembly P/N shown.

Add suffix from page 288 for other nut locking device.

**NUTS, BOLTS & WASHERS**

U-BOLTS, ROUND BEND, GALVANIZED

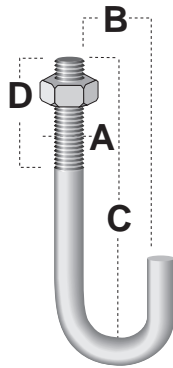


Dimensions (inches)				Assy. Part No.	Weight (lbs./100pcs)
A	B	C	D		
1/4	1-1/4	2-1/4	1-3/8	JR45GA	12/100
5/16	1-1/2	2-5/8	1-1/4	JR51A	15/100
5/16	1-1/2	2	1-1/4	JR55A	14/100
5/16	1-11/16	2-1/4	1	JR54A	15/100
3/8	13/16	1-5/8	7/8	JR69A	21/100
3/8	1	2-1/4	1-1/4	JR67A	23/100
3/8	1-1/4	2-3/4	1-5/8	JR66A	31/100
3/8	1-1/2	3	1-3/4	JR65A	29/100
3/8	2-1/8	3	1-1/4	JR68A	31/100
3/8	2-1/2	4	2	JR60A	35/100
3/8	2-1/2	3-1/2	1-1/2	JR61A	33/100
3/8	3-1/2	4-5/8	1-5/8	JR64A	41/100
3/8	4	6	2-1/4	JR62A	42/100
3/8	4-1/2	6-1/2	2-1/4	JR63A	52/100
1/2	3/4	3-1/2	2-1/2	JR81A	60/100
1/2	2	3-3/4	1-3/4	JR810A	63/100
1/2	2-1/4	4-1/2	2-1/4	JR82A	71/100
1/2	2-1/2	4-1/2	2-1/2	JR83A	71/100
1/2	3	5-5/8	3	JR84A	84/100
1/2	3	4-1/8	1-1/2	JR84SA	73/100
1/2	3-1/2	6	3	JR88A	88/100
1/2	4	6-1/2	3-1/2	JR89A	98/100
1/2	4-1/2	6	2-1/4	JR85A	91/100
1/2	5-5/8	8	3-1/4	JR86A	114/100
1/2	6-3/4	9	3-1/4	JR87A	127/100
1/2	8-3/4	11-1/8	2-1/2	JR90SA	188/100
1/2	10-7/8	13	2-1/2	JR110A	198/100
1/2	12-7/8	15	2-1/2	JR120A	243/100
3/4	3	5-3/4	3	JR121A	199/100
3/4	3-1/2	6-1/4	2-3/4	JR122A	263/100
3/4	4	6-3/4	2-1/2	JR123A	284/100
3/4	4-1/2	7-1/4	2-1/2	JR124A	280/100
3/4	5-5/8	8-5/16	2-1/2	JR125A	318/100
3/4	6-3/4	10	3-1/2	JR126STA	390/100
3/4	8-3/4	11-3/8	2-1/2	JR128A	424/100
3/4	10-7/8	13-3/8	2-5/8	JR1210A	517/100
3/4	12-3/4	15	2-1/2	JR1212A	591/100

Pal nuts included with assembly P/N shown.

Add suffix from page 288 for other nut locking device.

NUTS, BOLTS & WASHERS

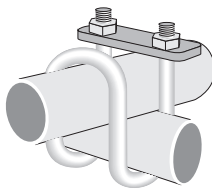


J-BOLTS, GALVANIZED

Dimensions (inches)				Assy. Part No.	Weight (lbs./100pcs)
A	B	C	D		
3/8	5/8	4	2-5/8	J44AA	16/100
3/8	5/8	5-11/16	2-3/4	J51A	23/100
3/8	5/8	7-9/16	5-1/2	J170A	35/100
3/8	3/4	2	1-1/2	J167A	10/100

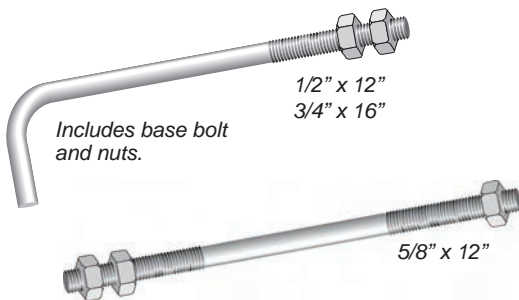
Pal nuts included with assembly P/N shown.

Add suffix from page 288 for other nut locking device.



U-BOLTS, DOUBLE BEND, GALVANIZED

Description	Assy. Part No.	Weight (lbs./100pcs)
5/16" dia. (18 THD) For 1-1/4" Tubing	TB5125BA	54/100



BASE BOLT, GALVANIZED

Description	Part No.	Weight (lbs.)
1/2" x 12" + 2" (Hook)	1/2X12BB	1/2 ea.
5/8" x 12"	260145G	1 ea.
3/4" x 16" + 3" (Hook)	3/4X16BB	1-1/2 ea.



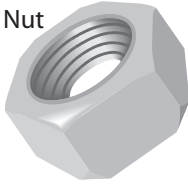
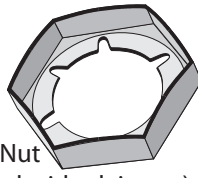
STEP BOLT, GALVANIZED

Description	Part No.	Weight (lbs./100pcs)
5/8" x 7" (2-1/2" THD Length)	210042G	84/100
5/8" x 7" (2-1/2" THD Length) With 2 Heavy Hex Nuts	5/8STEP	108/100



NUTS, BOLTS & WASHERS

Plain Nut

Pal Nut
(used with plain nut)

Tri-Loc Nut



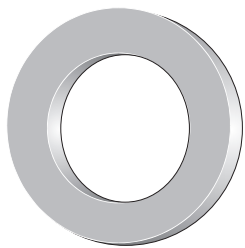
Anco Nut



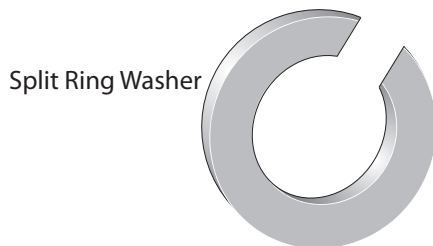
HEAVY HEX NUT OPTIONS, GALVANIZED

Description	Plain Nut	Weight (lbs./100pcs)	Pal Nut P/N	Weight (lbs./100pcs)	Tri-Loc P/N	Weight (lbs./100pcs)	Anco P/N	Weight (lbs./100pcs)
3/8" - 16	230005	3/100	110159	0.4/100	38CTLFG/2H	3/100	230008	3/100
1/2" - 13	110143	7/100	110160	1/100	50CTLFG/2H	7/100	110581	7/100
5/8" - 11	110146	12/100	110161	1/100	58CTLFG/2H	12/100	110510	12/100
3/4" - 10	230020	19/100	110162	2/100	75CTLFG/2H	19/100	110511	19/100
7/8" - 9	110149	30/100	110163	2/100	78CTLFG/2H	30/100	110512	30/100
1" - 8	110150	43/100	110164	4/100	1CTLFG/2H	43/100	110513	43/100

HARDENED FLAT WASHERS, GALVANIZED



Plain Washer

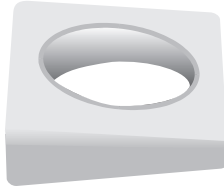


Split Ring Washer

Description	Plain Washer	Weight (lbs./100pcs)	Split Ring Washer	Weight (lbs./100pcs)
3/8"	110950	1/100	250082	1/100
1/2"	110202	2/100	250083	2/100
5/8"	110205	3/100	250084	3/100
3/4"	110208	5/100	250042	5/100
7/8"	110210	6/100	250046	10/100
1"	110214	8/100	250047	10/100

NUTS, BOLTS & WASHERS

BEVELED WASHERS, GALVANIZED



Description	Part No.	Weight (lbs./100pcs.)
3/8"	110398	7/100
1/2"	110399	7/100
5/8"	110400	15/100
3/4"	110551	14/100
7/8"	250062G	31/100
1"	110686	28/100

ROHN GUY MATERIALS

THIMBLES, GALVANIZED



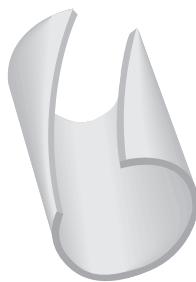
Description	Assy. Part No.	Weight (lbs./100pcs.)
1/4" Standard thimble, open for 1/8" to 3/16" guys	1/4TH	4/100
5/16" Heavy duty thimble, open for 3/16" guys	5/16THH	12/100
3/8" Heavy duty thimble, open for 1/4" guys	3/8THH	25/100
7/16" Heavy duty thimble, open for 5/16" guys	7/16THH	30/100
1/2" Heavy duty thimble, open for 3/8" guys	1/2THH	51/100
9/16" Heavy duty thimble, open for 7/16" guys	9/16THH	51/100
5/8" Heavy duty thimble, open for 1/2" or 9/16" guys	5/8THH	75/100
3/4" Heavy duty thimble, open for 5/8" guys	3/4THH	147/100
7/8" Heavy duty thimble, open for 3/4" guys	7/8THH	175/100
1" Heavy duty thimble, open for 7/8" guys	1THH	275/100

**ROHN GUY MATERIALS****CABLE CLAMPS, FORGED, GALVANIZED**

Description	Part No.	Weight (lbs./100pcs.)
3/16" Cable Clamp, Forged	140214	10/100
1/4" Cable Clamp, Forged	140001	20/100
5/16" Cable Clamp, Forged	140002	30/100
3/8" Cable Clamp, Forged	140003	47/100

NUT & PIN TYPE SHACKLES, HEAT TREATED, GALVANIZED

Description	Part No.	Weight (lbs./100pcs.)
3/8" (13,200 lbs. ultimate strength)	3/8S	25/100
1/2" (26,400 lbs. ultimate strength)	1/2S	70/100
5/8" (42,000 lbs. ultimate strength)	5/8S	150/100
3/4" (67,700 lbs. ultimate strength)	3/4S	232/100
7/8" (85,800 lbs. ultimate strength)	7/8S	340/100
1" (112,200 lbs. ultimate strength)	1S	500/100
1-1/8" (125,400 lbs. ultimate strength)	1-1/8S	700/100
1-1/4" (158,400 lbs. ultimate strength)	1-1/4S	975/100

BIG GRIP END SLEEVES, GALVANIZED

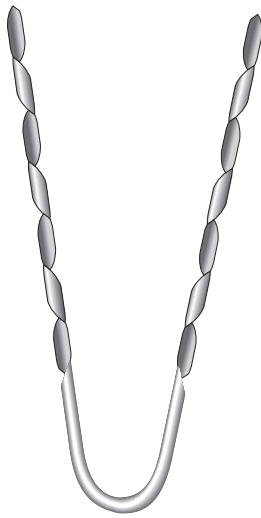
Description	Part No.	Weight (lbs./100pcs.)
3/16"	GC65303	3/100
1/4"	GC65136	3/100
5/16"	GG65128	3/100
3/8"	GC65264	5/100
7/16"	GC65265	7/100
1/2"	GC65266	10/100
9/16"	GC65267	11/100
5/8"	GC65268	14/100
3/4"	GC65269	21/100
7/8"	GC65270	27/100
1"	GC65271	32/100

NOTES:

1. Oversized heavy duty thimbles must be used with all Big-Grips.

ROHN GUY MATERIALS

BIG-GRIPS, GALVANIZED [BIG-GRIP WITH END SLEEVE]



Description	Part No.	Weight (lbs./100pcs.)
3/16"	BG2142	33/100
1/4"	BG2144	50/100
5/16"	BG2146	82/100
3/8"	BG2147	112/100
7/16"	BG2148	188/100
1/2"	BG2115	315/100
9/16"	BG2116	480/100
5/8"	BG2111	650/100
3/4"	BG2112	1080/100
7/8"	BGMS7023	1125/100

TURNBUCKLES, HEAT-TREATED, GALVANIZED



Thread Diameter x Take Up	Type	Part No.	Weights (lbs.)
3/8" x 6" (6,000 lbs. ultimate strength)	EE	3/8TBE&E	1
3/8" x 6" (6,000 lbs. ultimate strength)	EJ	3/8TBE&J	1
1/2" x 12" (11,000 lbs. ultimate strength)	EE	1/2TBE&E	2
1/2" x 12" (11,000 lbs. ultimate strength)	EJ	1/2TBE&J	2
5/8" x 12" (17,500 lbs. ultimate strength)	EJ	5/8TBE&J	4
3/4" x 12" (26,000 lbs. ultimate strength)	EJ	3/4TBE&J	5
7/8" x 12" (36,000 lbs. ultimate strength)	EJ	7/8TBE&J	8
1" x 12" (50,000 lbs. ultimate strength)	EJ	1TBE&J	11
1-1/4" x 18" (76,000 lbs. ultimate strength)	EJ	11/4X18TB	24
1-1/2" x 18" (107,000 lbs. ultimate strength)	EJ	11/2X18TB	35
1-3/4" x 18" (140,000 lbs. ultimate strength)	EJ	13/4X18TB	54

EYE BOLT, GALVANIZED



Description	Part No.	Weight (lbs.)
5/8" x 18" Eye Bolt with Nuts	260004P	2

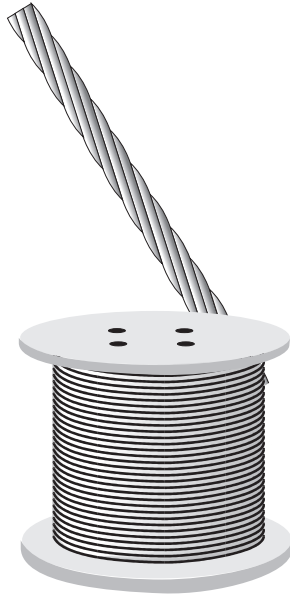
SCREW ANCHOR, GALVANIZED



Description	Part No.	Weight (lbs.)
1/2" dia. x 30" long (4" auger)	GAS4303	7
5/8" dia. x 48" long (6" auger)	GAS604	7



ROHN GUY MATERIALS

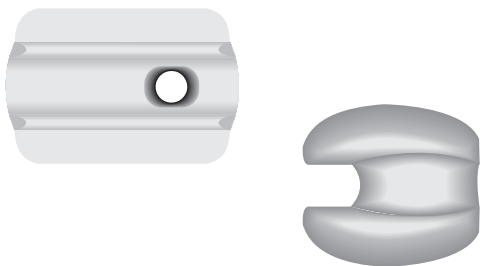


GUYS, GALVANIZED

Description	Part No.	Weight (lbs.)
6 Strand, 18GA - 1,000' coil (610 lbs. ultimate strength)	618	42
3/16" - 500' coil (3,990 lbs. ultimate strength)	3/16EHS500	36
3/16" - 1,000' coil (3,990 lbs. ultimate strength)	3/16EHS1000	73
3/16" - cut length* (3,990 lbs. ultimate strength)	3/16EHS	73/MFT
1/4" - 500' coil (6,650 lbs. ultimate strength)	1/4EHS500	60
1/4" - 1,000' coil (6,650 lbs. ultimate strength)	1/4EHS1000	120
1/4" - cut length* (6,650 lbs. ultimate strength)	1/4EHS	120/MFT
5/16" - cut length* (11,200 lbs. ultimate strength)	142265	205/MFT
3/8" - cut length* (15,400 lbs. ultimate strength)	142261	279/MFT
7/16" - cut length* (20,800 lbs. ultimate strength)	142260	399/MFT
1/2" - cut length* (26,900 lbs. ultimate strength)	142259	517/MFT
9/16" - cut length* (35,000 lbs. ultimate strength)	142258	671/MFT
5/8" - cut length* (42,400 lbs. ultimate strength)	142264	813/MFT
3/4" - cut length* (58,300 lbs. ultimate strength)	142257	1155/MFT
7/8" - cut length* (79,700 lbs. ultimate strength)	142256	1581/MFT
1" - cut length* (122,000 lbs. ultimate strength)	1BS	2100/MFT

*Please provide desired guy length with order.

MFT = 1,000 FT



GUY STRAIN INSULATORS, PORCELAIN

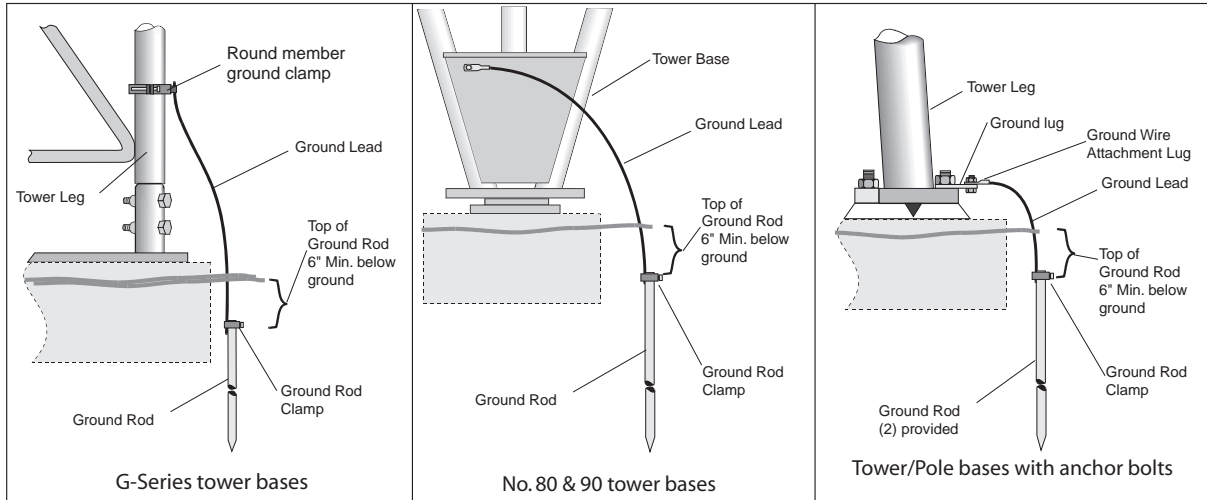
Description	Part No.	Weight (lbs.)
10,000 lbs. ultimate strength	502	1
12,000 lbs. ultimate strength	504	1.5
20,000 lbs. ultimate strength	506	3



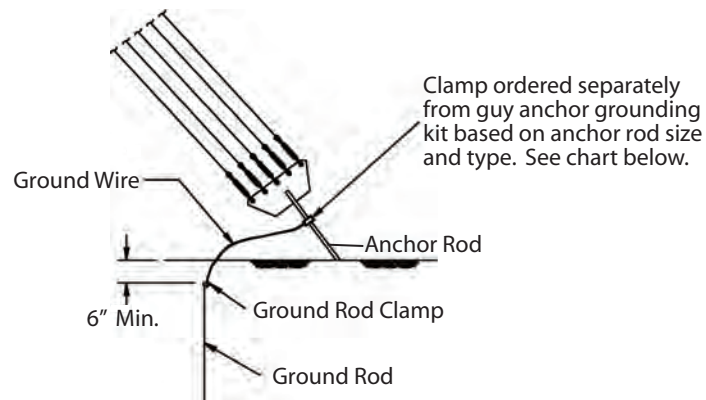
GRIPPLE GRIP

Description	Part No.
Gripple Grip for 6 strand, 18 GA guy installation	61820GRPL

ROHN REV G GROUNDING



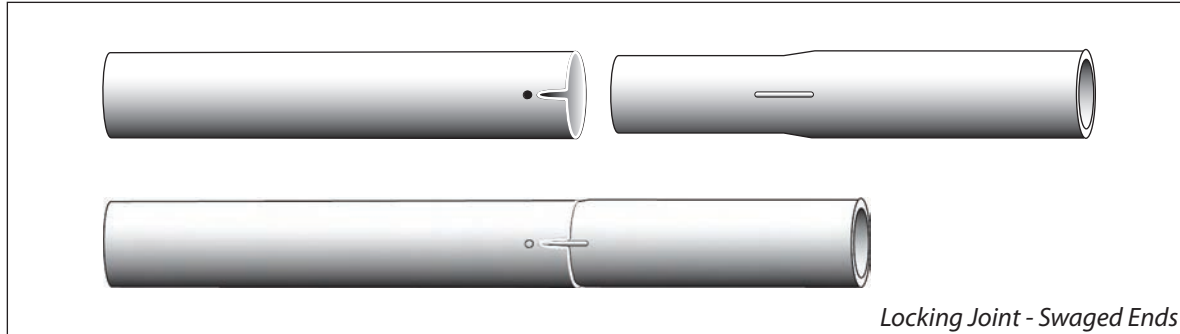
GUY ANCHOR GROUNDING KIT



Tower Type	Description	Kit Part No.	No. of Kits Required
Guyed Masts	80 & 90 Tower Base Grounding Kit	BGK1GGX	3 per tower
	55G & 65G Base Grounding Kit	BGK2GGX	3 per tower
	25G & 45G Base Grounding Kit	BGK3GGX	3 per tower
	Guy Anchor Grounding Kit	AGK1GGX	1 per anchor
	Guy Anchor Clamp for 1/2" - 3/4" O.D. Rods	CPC.5/.75	1 per anchor
	Guy Anchor Clamp for 1" - 1-1/4" O.D. Rods	CPC1/1.25	1 per anchor
	Guy Anchor Clamp for 1-1/2" - 2" O.D. Rods	CPC1.5/2	1 per anchor
	Guy Anchor Clamp for Angle Anchor Rods	213	1 per anchor
Self-Supporting Structures	1/2" Anchor Bolt Grounding Kit	BGK4GGX	3 per tower/pole
	5/8" Anchor Bolt Grounding Kit	BGK5GGX	3 per tower/pole
	3/4" Anchor Bolt Grounding Kit	BGK6GGX	3 per tower/pole
	7/8" Anchor Bolt Grounding Kit	BGK7GGX	3 per tower/pole
	1" Anchor Bolt Grounding Kit	BGK8GGX	3 per tower/pole



STEEL TUBING

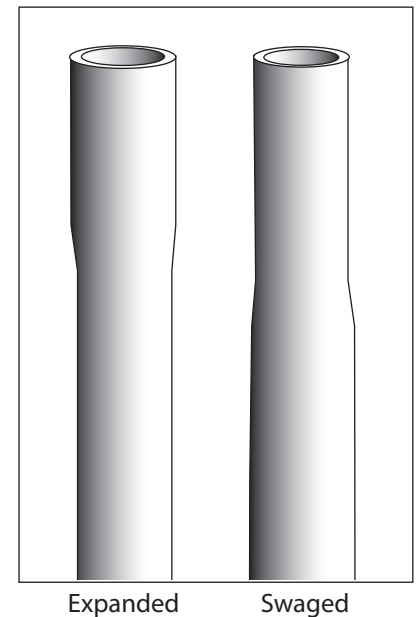


ROHN offers both swaged and expanded 16 GA. tubing, commonly used with our roof and wall mounts.

Swaged - This tubing has a locking joint. When tubing is swaged, the metal is compressed and made thicker so that the joint is stronger than the original material. Swaging also eliminates the "joint bulge" common with expanded tubing.

Expanded - A tube with an expanded end used along with a tube with a plain end.

ROHN tubing is offered in two types of finishes, hot-dip galvanized and pre-galvanized. ROHN's hot-dip galvanized tubing is fabricated from high strength steel, then immersed in molten zinc giving all surfaces, including the interior, an even coating of zinc for maximum corrosion protection. There are no seams, holes or edges left uncoated. Pre-galvanized tubing is made from a coil of steel which is galvanized at the steel mill, cut into strips, and then formed into a piece of tubing. Where the tubing is welded, zinc is sprayed over the weld to give it protection. It has a slightly uncoated seam on the inside and ends.



TUBING SPECIFICATIONS

Tubing Part No.	End Type	Description	Finish
160505GHS	Swaged	1-1/4" O.D. x 16 GA. x 5' long	Hot-Dip Galvanized
160505PHS	Swaged	1-1/4" O.D. x 16 GA. x 5' long	Pre-Galvanized
160506PLX	Expanded	1-1/2" O.D. x 16 GA. x 5' long	Pre-Galvanized
161005GHS	Swaged	1-1/4" O.D. x 16 GA. x 10' long	Hot-Dip Galvanized
161005PHS	Swaged	1-1/4" O.D. x 16 GA. x 10' long	Pre-Galvanized

MOUNTING TUBES HOT-DIP GALVANIZED

Standard

Description	Length	Part Number	Weight (lbs.)
2.38" O.D. x 0.154" wall	5'	KH275	20
2.38" O.D. x 0.154" wall	6'	KH1256	24
2.38" O.D. x 0.154" wall	6' 8"	KH281	26
2.38" O.D. x 0.154" wall	8'	KY1304	30
2.38" O.D. x 0.154" wall	10'	KH287	39
2.38" O.D. x 0.154" wall	12'	KH365	47
2.38" O.D. x 0.154" wall	14'	KH2805	55
2.38" O.D. x 0.154" wall	16'	KH2806	62
2.38" O.D. x 0.154" wall	18'	KH2807	70
2.88" O.D. x 0.203" wall	5'	KH276	31
2.88" O.D. x 0.203" wall	6'	KH2576	37
2.88" O.D. x 0.203" wall	6' 8"	KH282	41
2.88" O.D. x 0.203" wall	8'	KH2541	50
2.88" O.D. x 0.203" wall	10'	KH288	62
2.88" O.D. x 0.203" wall	12'	KH366	74
2.88" O.D. x 0.203" wall	14'	KH2802	86
2.88" O.D. x 0.203" wall	16'	KH2803	99
2.88" O.D. x 0.203" wall	18'	KH2804	111
2.88" O.D. x 0.203" wall	20'	KH4813	123
4.50" O.D. x 0.237" wall	5'	KH279	58
4.50" O.D. x 0.237" wall	6' 8"	KH285	77
4.50" O.D. x 0.237" wall	8'	KH2447	92
4.50" O.D. x 0.237" wall	10'	KH291	115
4.50" O.D. x 0.237" wall	12'	KH369	138
4.50" O.D. x 0.237" wall	14'	KH2509	161

Extra Heavy

Description	Length	Part Number	Weight (lbs.)
2.38" O.D. x 0.218" wall	5'	KH1193	27
2.38" O.D. x 0.218" wall	6' - 8"	KH1194	36
2.38" O.D. x 0.218" wall	8'	KH2229	43
2.88" O.D. x 0.276" wall	5'	KH1200	41
2.88" O.D. x 0.276" wall	6' - 8"	KH1201	55
2.88" O.D. x 0.276" wall	8'	KH2987	65
2.88" O.D. x 0.276" wall	10'	KH1202	82
2.88" O.D. x 0.276" wall	12'	KH1203	98
2.88" O.D. x 0.276" wall	14'	KH5768	114
4.50" O.D. x 0.337" wall	5'	KH1221	80
4.50" O.D. x 0.337" wall	6' - 8"	KH1222	106
4.50" O.D. x 0.337" wall	8'	KH1977	127
4.50" O.D. x 0.337" wall	10'	KH1223	159
4.50" O.D. x 0.337" wall	12'	KH1224	191
4.50" O.D. x 0.337" wall	16'	KH3614	254
4.50" O.D. x 0.337" wall	18'	KH5627	286



MISCELLANEOUS



PAINT

Description	Part No.	Weight (lbs.)
Tower Paint, Orange, Acrylic Latex	PNTNPO5	11/gal.
Tower Paint, White, Acrylic Latex	PNTNPW9	11/gal.



COLD GALVANIZE

Description	Part No.	Weight (lbs.)
Cold Galvanize, Spray	380063	1/can
Cold Galvanize, Gallon	380147	1/gal.