



U.S. DEPARTMENT OF THE INTERIOR  
U.S. GEOLOGICAL SURVEY

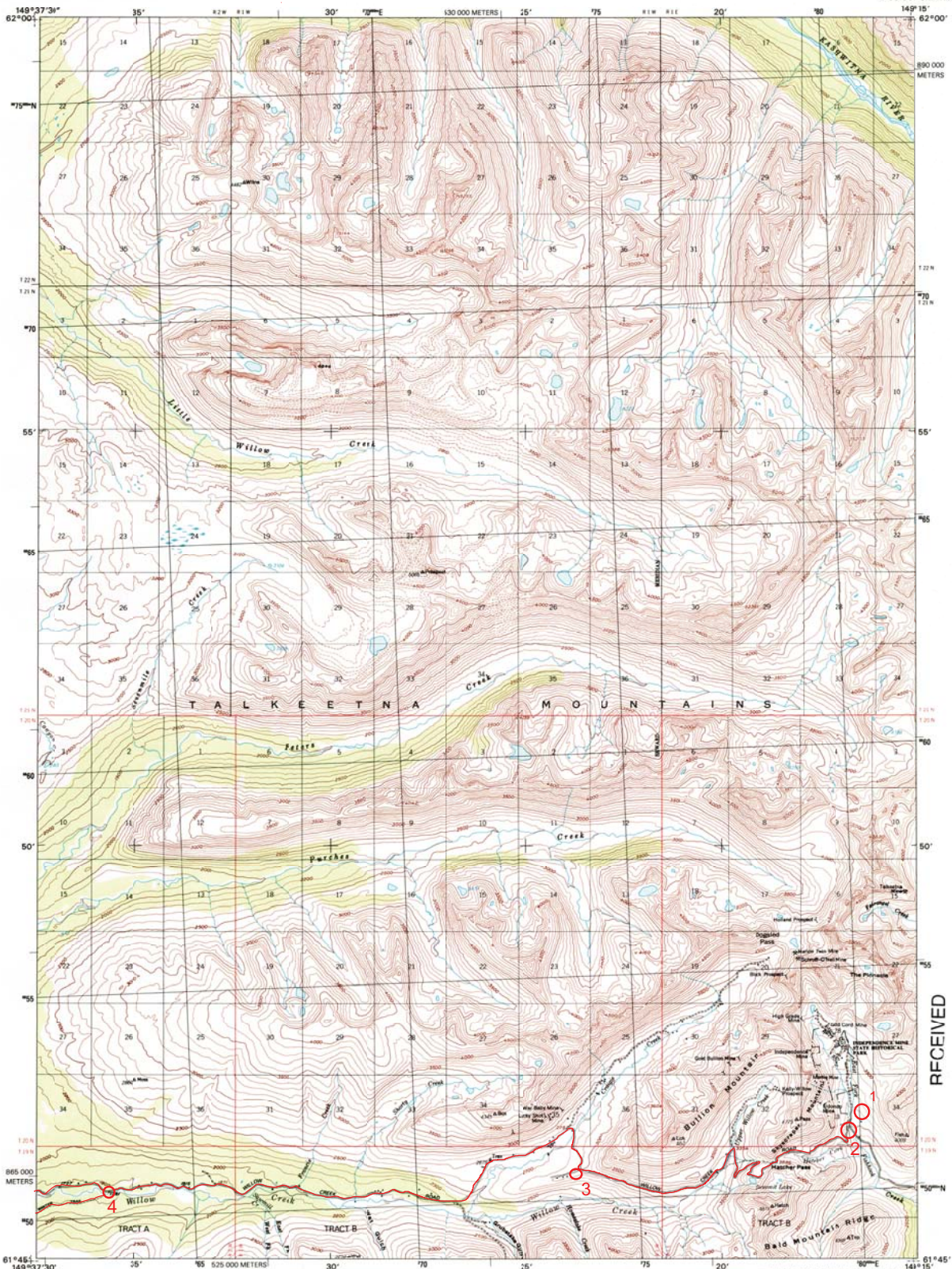
1. Hatcher Pass Base Camp 61°46'39.74"N 149°16'39.52"W
2. Hatcher Pass Trail Start 61°46'36.44"N 149°16'45.01"W
3. Lucky Shot Mine Y 61°46'5.12"N 149°23'41.69"W
4. "Winter Trail Start to Willow" 61°45'51.48"N 149°35'51.81"W

Approximate miles of Trail Utilized: 30

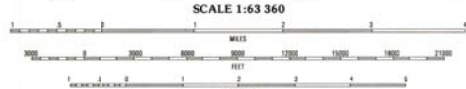
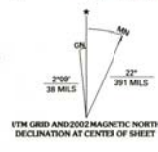
Trials Utilized: Hatcher Pass Rd, Purchase Creek Trail

Winter Trail from Houston  
ANCHORAGE D-7 QUADRANGLE  
ALASKA-MATANUSKA-SUSTITNA BOROUGH  
1:63 360 SERIES (TOPOGRAPHIC)

#16-A



Produced by the United States Geological Survey  
Topography compiled 1949. Planimetry derived from imagery taken 1994 and other sources. Public Land Survey System and survey control current as of 1951. This map has not been field checked. The southeast quarter of this area also covered by 1:25 000-scale map: Anchorage D-7 SW, dated 1983. Boundaries current as of 2000.  
North American Datum of 1983 (NAD 83). Projection and 5 000-meter grid: Universal Transverse Mercator, zone 6.  
5 000-meter ticks: Alaska Coordinate System of 1983 (now 4).  
North American Datum of 1927 (NAD 27) is shown by dashed corner ticks. The values of the shift between NAD 83 and NAD 27 are obtainable from National Geodetic Survey NADCON software.  
There may be private inholdings within the boundaries of the National or State reservations shown on this map.  
Protected land lines are predetermined by the Bureau of Land Management, Folios 5-1 and 5-2, Seward Meridian.



CONTOUR INTERVAL 100 FEET  
AREAS NOT SURVEYED IN DETAIL INDICATED BY DASHED LINES  
NATIONAL GEODETIC VERTICAL DATUM OF 1929  
TO CONVERT FEET TO METERS, MULTIPLY BY 0.3048



ROAD CLASSIFICATION

Primary highway hard surface	Unimproved road
Secondary highway hard surface	4 wheel drive
Light-duty road, hard or improved surface	Trails
	State Route

1	2	1 Talkeetna Mountains 1-6
4	1	2 Talkeetna Mountains 1-6
6	7	4 Anchorage D-8
		5 Anchorage C-6
		6 Anchorage C-6
		7 Anchorage C-7
		8 Anchorage C-8

ANCHORAGE D-7, AK

1994

FOR SALE BY U.S. GEOLOGICAL SURVEY, P.O. BOX 25286, DENVER, COLORADO 80225  
A FOLDER DESCRIBING TOPOGRAPHIC MAPS AND SYMBOLS IS AVAILABLE ON REQUEST



RECEIVED  
JUL 3 1 2002  
USGS WASH DC  
HISTORICAL MAP ARCHIVES





5. Purchase Creek Trail Head 61°45'42.32"N 149°40'27.41"W  
 6. Bus Turnaround End Base Camp 61°46'13.19"N 149°42'51.10"W

#16-B



U.S. DEPARTMENT OF THE INTERIOR  
 U.S. GEOLOGICAL SURVEY

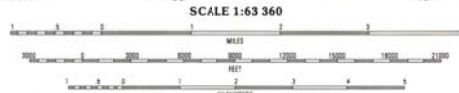
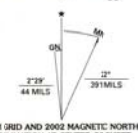
ANCHORAGE D-8 QUADRANGLE  
 ALASKA-MATANUSKA-SUSITNA BOROUGH  
 1:63 360 SERIES (TOPOGRAPHIC)



RECEIVED  
 JUL 3 1 2002  
 USGS NWJ  
 HISTORICAL MAP ARCHIVES



Produced by the United States Geological Survey  
 Topography compiled 1949. Planimetry derived from imagery taken 1994 and other sources. Public Land Survey system and survey control current as of 1960. This map has not been field checked. The SE quarter of this area also covered by 1:25 000-scale map: Anchorage D-8 SE, dated 1983. Boundaries current as of 2000.  
 North American Datum of 1983 (NAD 83). Projection and 5 000-meter grid. Universal Transverse Mercator, zone 6. 5 000-meter scale. Alaska Coordinate System of 1983 (zone 6).  
 North American Datum of 1927 (NAD 27) is shown by dashed corner ticks. The value of the shift between NAD 83 and NAD 27 are obtainable from National Geodetic Survey NADCON software.  
 There may be private landholdings within the boundaries of the National or State reservations shown on this map.  
 Protracted landlines are predetermined by the Bureau of Land Management, Folio S-2, Seward Meridian.



CONTOUR INTERVAL 100 FEET  
 SUPPLEMENTARY CONTOUR INTERVAL 5 FEET  
 NATIONAL GEODETIC VERTICAL DATUM OF 1929  
 TO CONVERT FEET TO METERS, MULTIPLY BY 0.3048



ROAD CLASSIFICATION  
 Primary highway  
 hard surface .....  
 Secondary highway  
 hard surface .....  
 Light-duty road, hard  
 or improved surface .....  
 Unimproved road .....  
 4 wheel drive .....  
 Trails .....  
 State Route

1	2	1 Talkeetna A-1
		2 Talkeetna Mountain A-1
3	4	3 Trough D-1
		4 Anchorage D-7
5	6	5 Trough C-1
		6 Anchorage C-8
7		7 Anchorage C-7

ANCHORAGE D-8, AK  
 1994

FOR SALE BY U.S. GEOLOGICAL SURVEY, P.O. BOX 25286, DENVER, COLORADO 80225  
 A FOLDER DESCRIBING TOPOGRAPHIC MAPS AND SYMBOLS IS AVAILABLE ON REQUEST





U.S. DEPARTMENT OF THE INTERIOR  
U.S. GEOLOGICAL SURVEY

ANCHORAGE C-8 QUADRANGLE  
ALASKA-MATANUSKA-SUSITNA BOROUGH  
1:63 360 SERIES (TOPOGRAPHIC)



RECEIVED

APR 3 0 2002

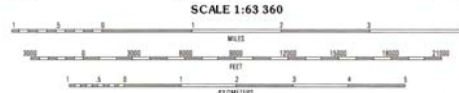
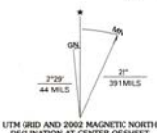
HISTORICAL MAP ARCHIVES



Produced by the United States Geological Survey

Topography compiled 1949. Planimetry derived from imagery taken 1994 and other sources. Public Land Survey System and survey control current as of 1987. This map has not been field checked. Boundaries current as of 2000. This area also covered by 1:25 000-scale maps: Anchorage C-8 NW, Anchorage C-8 NE, and Anchorage C-8 SW, dated 1993 and Anchorage C-8 SE, dated 1992.

North American Datum of 1983 (NAD 83). Projection and 5 000-meter grid: Universal Transverse Mercator, zone 6. 5 000-meter ticks: Alaska Coordinate System of 1983 (zone 4). North American Datum of 1927 (NAD 27) is shown by dashed corner ticks. The values of the shift between NAD 83 and NAD 27 are obtainable from National Geodetic Survey NADCON software. There may be private inholdings within the boundaries of the National or State reservations shown on this map. Protected land lines are predetermined by the Bureau of Land Management Folios S-2 and S-13, Seward Meridian.



CONTOUR INTERVAL 50 FEET  
SUPPLEMENTARY CONTOUR INTERVAL 5 FEET  
NATIONAL GEODETIC VERTICAL DATUM OF 1929  
TO CONVERT FEET TO METERS, MULTIPLY BY 1.3648



ROAD CLASSIFICATION

Primary highway  
hard surface .....  
Secondary highway  
hard surface .....  
Light-duty road, hard  
or improved surface .....  
Trails .....  
State Route

1	2	3	1. Trunk D-1
			2. Anchorage D-8
			3. Anchorage D-7
4	5		4. Trunk C-1
			5. Anchorage C-7
6	7	8	6. Trunk B-1
			7. Anchorage B-8
			8. Anchorage B-7

ANCHORAGE C-8, AK  
1994

FOR SALE BY U.S. GEOLOGICAL SURVEY, P.O. BOX 25286, DENVER, COLORADO 80225  
A FOLDER DESCRIBING TOPOGRAPHIC MAPS AND SYMBOLS IS AVAILABLE ON REQUEST