



U.S. DEPARTMENT OF THE INTERIOR
U.S. GEOLOGICAL SURVEY

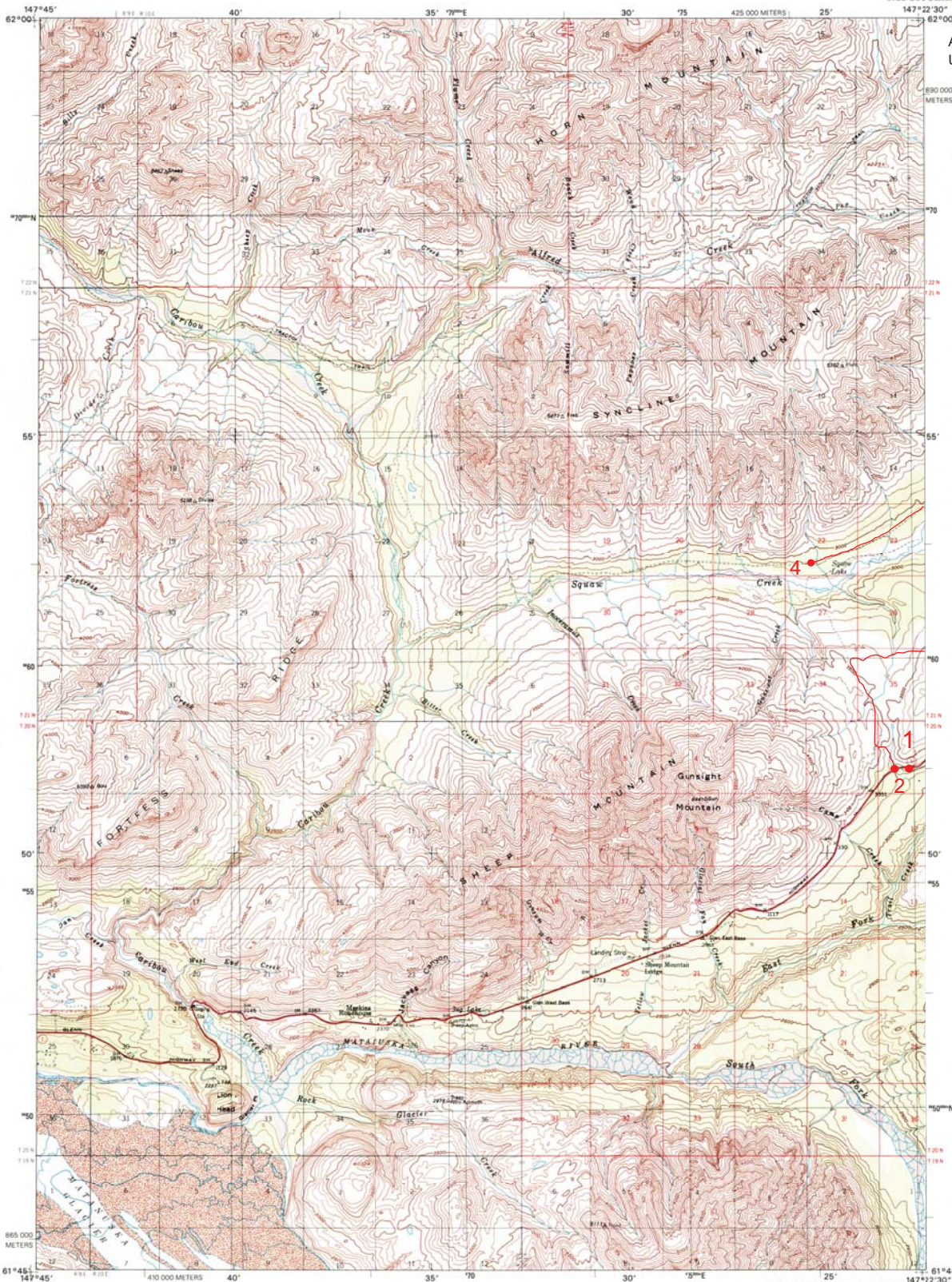
- 1 - Base Camp / Staging Area: 61°51'0.25"N 147°22'57.58"W
2 - Squaw Creek Trail Access Point: 61°51'0.34"N 147°23'24.34"W
3 - Squaw Lake / Turn Around Point / End Point: 61°53'33.43"N 147°24'47.13"W

Trails Utilized: Belanger Pass / Squaw Lake Trail,
Eagle River Trail, E. Fork Trail, Tahnetta Pass Trail

#8 - A

ANCHORAGE D-2 QUADRANGLE
ALASKA-MATANUSKA-SUSITNA BOROUGH
1:63 360 SERIES (TOPOGRAPHIC)

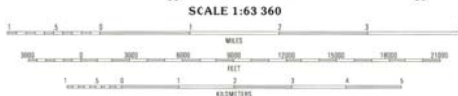
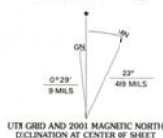
Approximate Miles of
Utilized Trail: 20 - 25



RECEIVED
OCT 3 1 2001
HISTORICAL ARCHIVES



Produced by the United States Geological Survey
Topography compiled 1948. Planimetry derived from imagery taken 1993. Public Land Survey System current as of 1970. Southwest quarter current as of 1991. Survey control current as of 1970. Boundaries current as of 1999. This map has not been field checked.
North American Datum of 1983 (NAD 83). Projection and 5 000-meter grid. Universal Transverse Mercator, zone 6. 5 000-meter ticks. Alaska Coordinate System of 1983 (zone 3). North American Datum of 1927 (NAD 27) is shown by dashed corner ticks. The values of the shift between NAD 83 and NAD 27 are obtainable from National Geodetic Survey NADCON software. Protected land laws are predetermined by the Bureau of Land Management, Folio S-1, Seward Meridian.



CONTOUR INTERVAL 100 FEET
SUPPLEMENTARY CONTOUR INTERVAL 50 FEET
NATIONAL GEODETIC VERTICAL DATUM OF 1929
TO CONVERT FROM FEET TO METERS, MULTIPLY BY 0.3048



ROAD CLASSIFICATION
Primary highway
hard surface
Secondary highway
hard surface
Light-duty road, hard
or improved surface
Trails
State Route

1	2
3	4
5	6
7	8

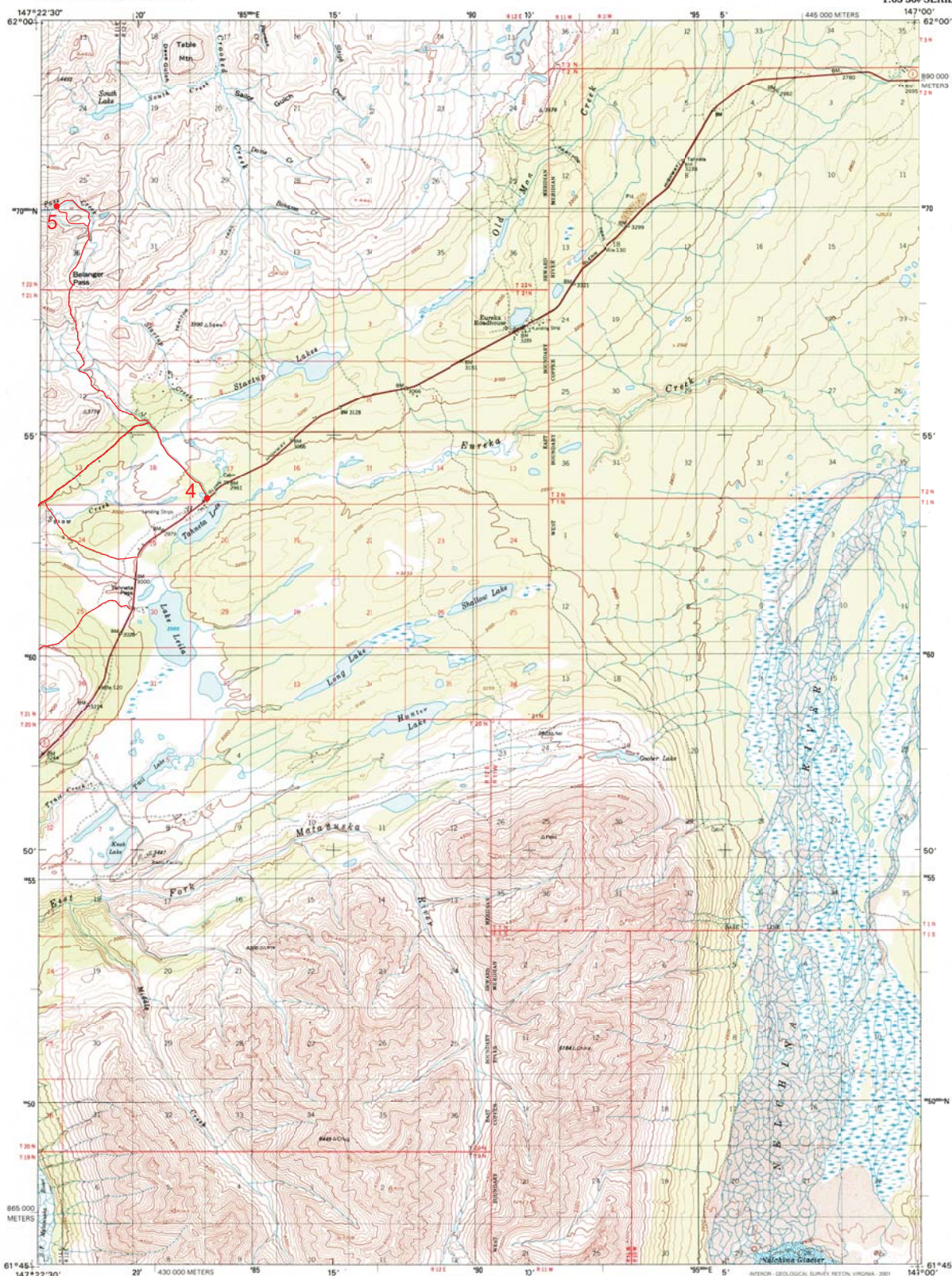
ADJOINING QUADRANGLES

1 Tahanea Mountains L-2
2 Tahanea Mountains L-1
3 Anchorage D-3
4 Anchorage D-1
5 Anchorage C-3
6 Anchorage C-2
7 Anchorage C-1



FOR SALE BY U.S. GEOLOGICAL SURVEY, P.O. BOX 2528, DENVER, COLORADO 80225
A FOLDER DESCRIBING TOPOGRAPHIC MAPS AND SYMBOLS IS AVAILABLE ON REQUEST

ANCHORAGE D-2, AK
1993



RECEIVED
OCT 9 1 2001
HISTORICAL MAP ARCHIVES

STORICAL MAP ARCHIVES

ISBN 0-607-93123-X
9 780607 931235

Produced by the United States Geological Survey
 Computations compiled 1984. Planimetry derived from imagery
 taken 1963. Public Lands Survey System current as of 1977.
 Elevation based on 1955 datum. Boundaries current as of 1977.
 Boundaries current as of 1999. This map has not been field checked
 North American Datum of 1983 (NAD 83). Projection and
 datum: UTM, Zone 18, North. UTM coordinates are based on
 5 000-meter grid. UTM coordinates of National Survey of 1983 (zone 3)
 North American Datum of 1927 (NAD 27) is shown by dashed
 corner ticks. The values of the shift between NAD 83 and NAD 27
 are obtainable from National Geodetic Survey NADCON software
 Protracted land lines are predetermined by the Bureau of Land
 Management, U.S. Geological Survey, Seward Meridian, CR-4 and CR-5,
 Copper River Meridian

UTM GRID AND 2001 MAGNETIC NORTH

CONTOUR INTERVAL 100 FEET
SUPPLEMENTARY CONTOUR INTERVAL 50 FEET
NATIONAL GEODETIC VERTICAL DATUM OF 1929
TO CONVERT FROM FEET TO METERS, MULTIPLY BY 0.3048

FOR SALE BY U.S. GEOLOGICAL SURVEY, P.O. BOX 25216, DENVER, COLORADO 80225
A FOLDER DESCRIBING TOPOGRAPHIC MAPS AND SYMBOLS IS AVAILABLE ON REQUEST



QUADRANGLE LOCATION

ROAD CLASSIFICATION

Primary highway
hard surface Unimproved road
Secondary highway
hard surface 4 wheel drive FTR
Light-duty road, hard
or improved surface Trails
State Road

ANCHORAGE D-1, AK

1993