

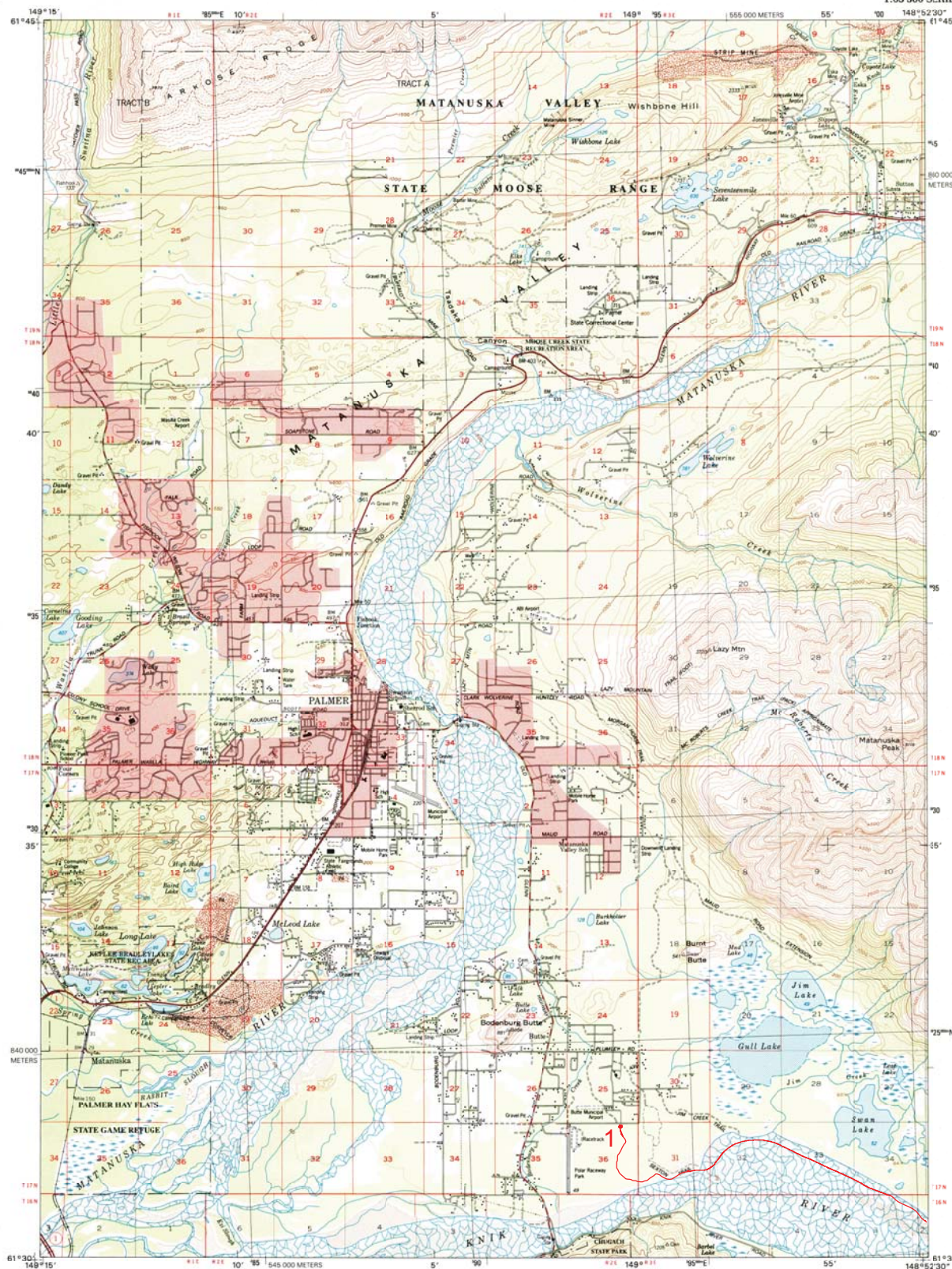


U.S. DEPARTMENT OF THE INTERIOR  
U.S. GEOLOGICAL SURVEY

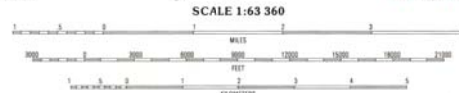
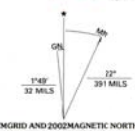
1 - Base Camp / Trail Head : 61°31'35.46"N 149° 0'12.65"W Approximate Miles of Trail Utilized: 30  
2 - End Point / Turn Around Point: 61°24'59.65"N 148°33'15.21"W  
Trails Utilized: Sexton Trail, Jim Creek Trail, Knik Glacier Tun Trail

ANCHORAGE C-6 QUADRANGLE  
ALASKA-MATANUSKA-SUSITNA BOROUGH  
1:63 360 SERIES (TOPOGRAPHIC)

#1 - A



Produced by the United States Geological Survey  
Topography compiled 1949. Planimetry derived from imagery taken 1994 and other sources. Public Land Survey System and survey control current as of 1987. This map has not been field checked. This area also covered by 1:25 000-scale maps: Anchorage C-6 SE, SW, NE and NW, dated 1993. Boundaries current as of 2000.  
North American Datum of 1983 (NAD 83). Projection and 5 000-meter grid: Universal Transverse Mercator, zone 6.  
5 000-meter ticks: Alaska Coordinate System of 1983 (zone 6).  
North American Datum of 1927 (NAD 27) is shown by dashed corner ticks. The values of the shift between NAD 83 and NAD 27 are obtainable from National Geodetic Survey NADCON software.  
There may be private inholdings within the boundaries of the National or State reservations shown on this map.  
Protracted land lines are predetermined by the Bureau of Land Management, Folios S-1 and S-14, Seward Meridian.



CONTOUR INTERVAL 100 FEET  
SUPPLEMENTARY CONTOUR INTERVAL 50 FEET  
AREAS NOT SURVEYED IN DETAIL, INDICATED BY DASHED LINES  
NATIONAL GEODETIC VERTICAL DATUM OF 1929  
TO CONVERT FEET TO METERS, MULTIPLY BY 0.3048



ROAD CLASSIFICATION  
Primary highway  
hard surface  
Secondary highway  
hard surface  
Light duty road, hard or improved surface  
Unimproved road  
4 wheel drive  
Trails  
State Route

1	2	3	1 Anchorage D-7 2 Anchorage D-6 3 Anchorage D-5 4 Anchorage C-7 5 Anchorage C-6 6 Anchorage B-7 7 Anchorage B-6 8 Anchorage B-5
4	5	6	
6	7	8	

ANCHORAGE C-6, AK  
1994

RECEIVED  
SEP 3 0 2002  
USGS  
HISTORICAL MAP ARCHIVES



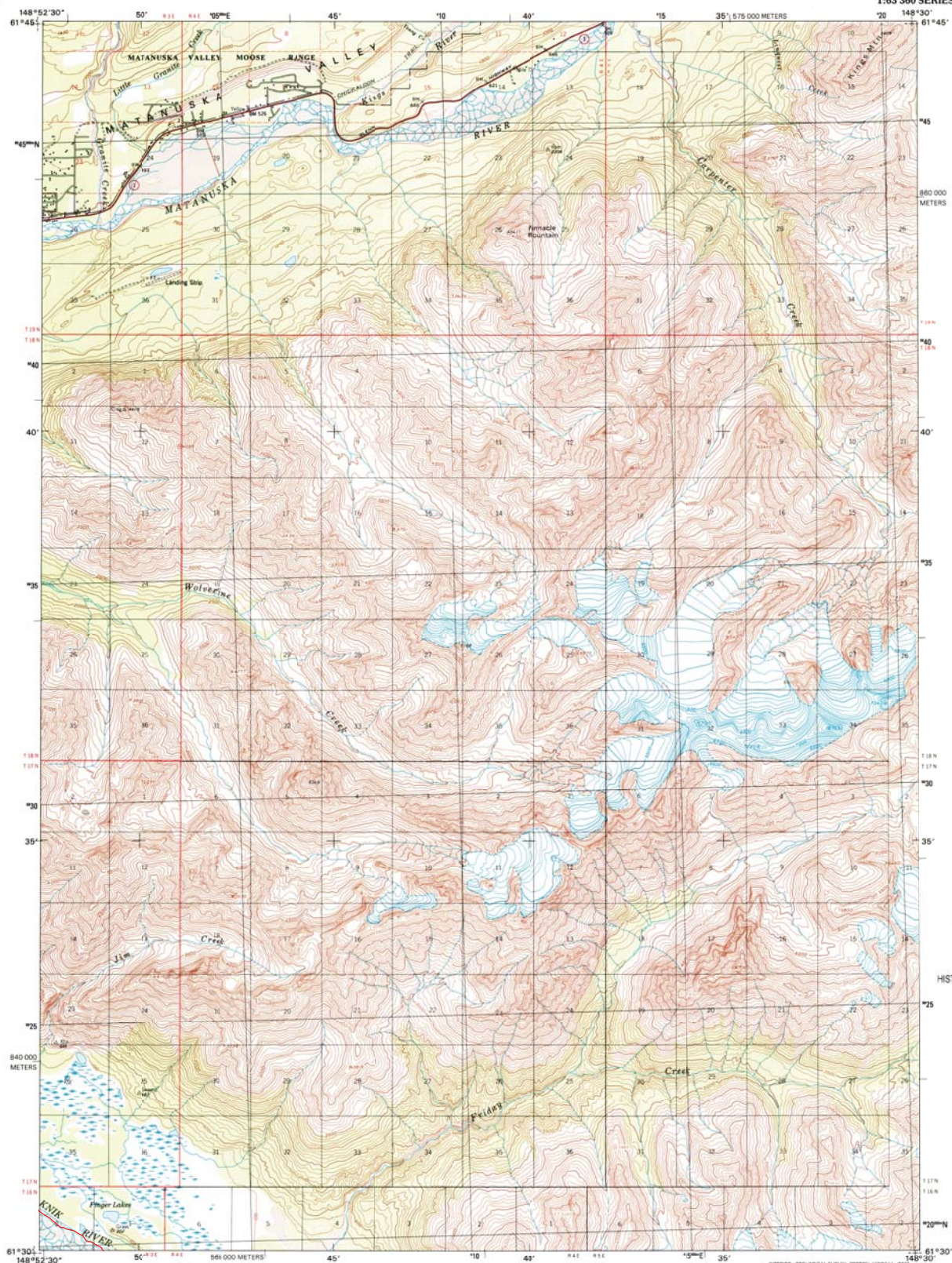
FOR SALE BY U.S. GEOLOGICAL SURVEY, P.O. BOX 25286, DENVER, COLORADO 80225  
A FOLDER DESCRIBING TOPOGRAPHIC MAPS AND SYMBOLS IS AVAILABLE ON REQUEST





U.S. DEPARTMENT OF THE INTERIOR  
U.S. GEOLOGICAL SURVEY

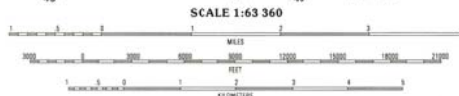
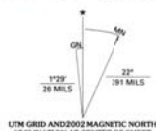
#1 -B  
ANCHORAGE C-5 QUADRANGLE  
ALASKA-MATANUSKA-SUSITNA BOROUGH  
1:63 360 SERIES (TOPOGRAPHIC)



RECEIVED  
AUG 31 2002

U.S. GEOLOGICAL SURVEY  
HISTORICAL MAP ARCHIVES

Produced by the United States Geological Survey  
Topography compiled 1949. Planimetry derived from imagery taken 1994 and other sources. Public Land Survey System and survey control current as of 1960. This map has not been field checked. Boundaries current as of 2000.  
North American Datum of 1983 (NAD 83). Projection and 5 000-meter grid: Universal Transverse Mercator, zone 6.  
5 000-meter ticks: Alaska Coordinate System of 1983 (zone 6).  
North American Datum of 1927 (NAD 27) is shown by dashed corner ticks. The values of the shift between NAD 83 and NAD 27 are obtainable from National Geodetic Survey NADCON software.  
There may be private inholdings within the boundaries of the National or State reservations shown on this map.  
Protected land lines are predetermined by the Bureau of Land Management, Folios S-1 and S-14, Seward Meridian.



CONTOUR INTERVAL 100 FEET  
SUPPLEMENTARY CONTOUR INTERVAL 50 FEET  
NATIONAL GEODETIC VERTICAL DATUM OF 1929  
TO CONVERT FEET TO METERS, MULTIPLY BY 0.3048



ROAD CLASSIFICATION

Primary highway	hard surface	Unimproved road
Secondary highway	hard surface	4 wheel drive
Light-duty road, hard or improved surface		Trail

State Route

1	2	3	1 Anchorage D-6
			2 Anchorage D-5
			3 Anchorage D-4
			4 Anchorage C-6
			5 Anchorage C-4
			6 Anchorage B-6
			7 Anchorage B-5
			8 Anchorage B-4

ADJOINING QUADRANGLES



FOR SALE BY U.S. GEOLOGICAL SURVEY, P.O. BOX 25285, DENVER, COLORADO 80225  
A FOLDER DESCRIBING TOPOGRAPHIC MAPS AND SYMBOLS IS AVAILABLE ON REQUEST

ANCHORAGE C-5, AK  
1994

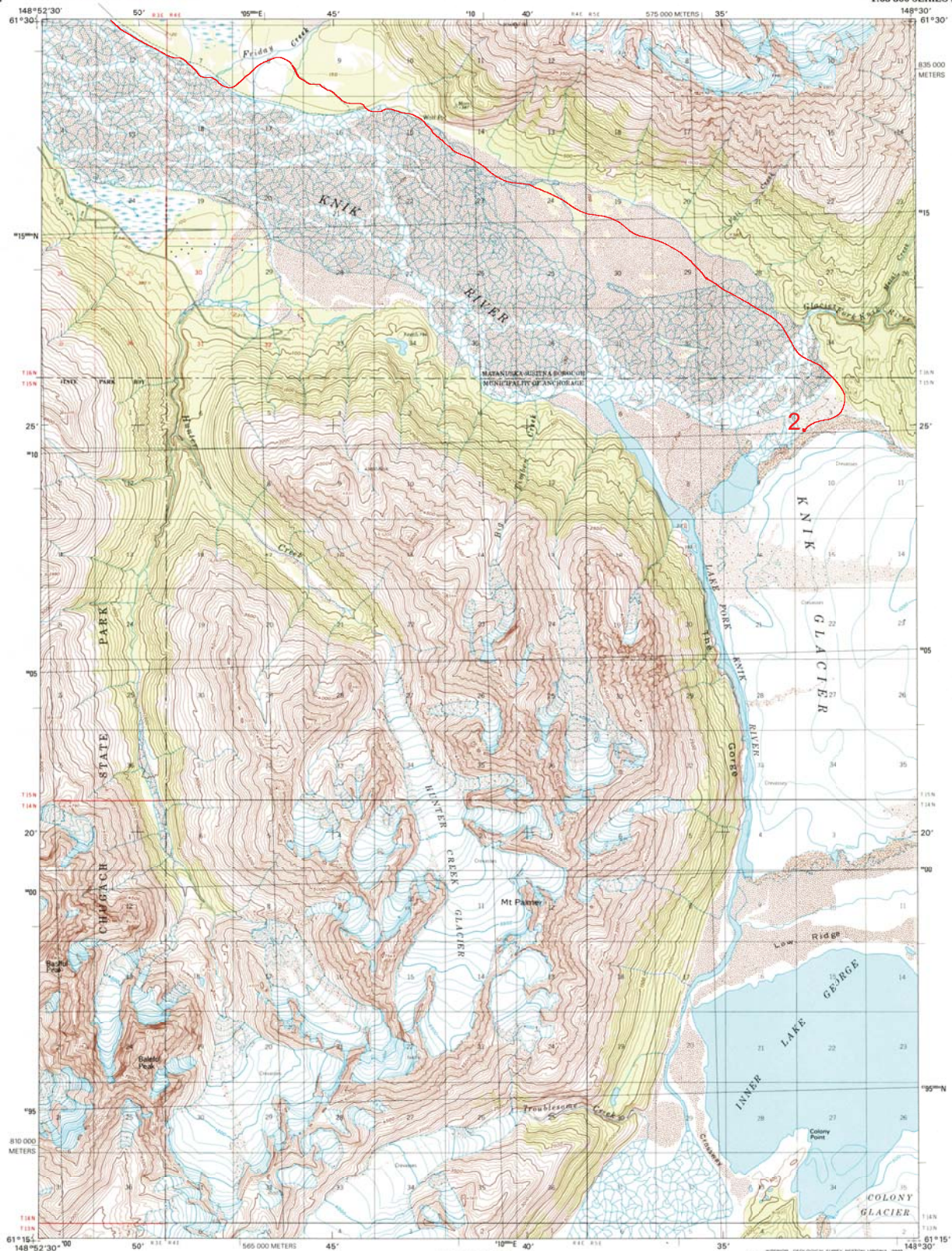






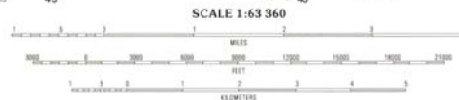
U.S. DEPARTMENT OF THE INTERIOR  
U.S. GEOLOGICAL SURVEY

#1 - C  
ANCHORAGE B-5 QUADRANGLE  
ALASKA-GREATER ANCHORAGE BOROUGH  
1:63 360 SERIES (TOPOGRAPHIC)



Produced by the United States Geological Survey  
Topography compiled 1950. Planimetry derived from imagery taken 1994 and other sources. Public Land Survey System survey control current as of 1960. This map has not been field checked. Boundaries current as of 2000.  
North American Datum of 1983 (NAD 83). Projection and 5 000-meter grid: Universal Transverse Mercator, zone 6. 5 000-meter ticks: Alaska Coordinate System of 1983 (zone 4).  
North American Datum of 1927 (NAD 27) is shown by dashed corner ticks. The values of the shift between NAD 83 and NAD 27 are obtainable from National Geodetic Survey NADCON software.  
There may be private inholdings within the boundaries of the National or State reservations shown on this map. Protracted land lines are predetermined by the Bureau of Land Management, Folio S-2, Seward Meridian.

UTM GRID AND 2002 MAGNETIC NORTH DECLINATION AT CENTR OF SHEET



CONTOUR INTERVAL 100 FEET  
SUPPLEMENTARY CONTOUR INTERVAL 50 FEET  
NATIONAL GEODETIC VERTICAL DATUM OF 1929  
TO CONVERT FEET TO METERS, MULTIPLY BY 0.3048



ROAD CLASSIFICATION

Primary highway	Unimproved road
hard surface	
Secondary highway	4 wheel drive
hard surface	
Light-duty road, hard or improved surface	
Trails	
State Route	

1	2	3	1 Anchor
			2 Anchor
			3 Anchor
4		5	4 Anchor
			5 Anchor
			6 Anchor
6	7	8	7 Anchor
			8 Anchor

ADJOINING QUADRANGLES

ANCHORAGE B-5, AK  
194

DECEMBER  
JUL 3 1 2002  
USGS INFO  
HISTORICAL MAP ARCHIVES

