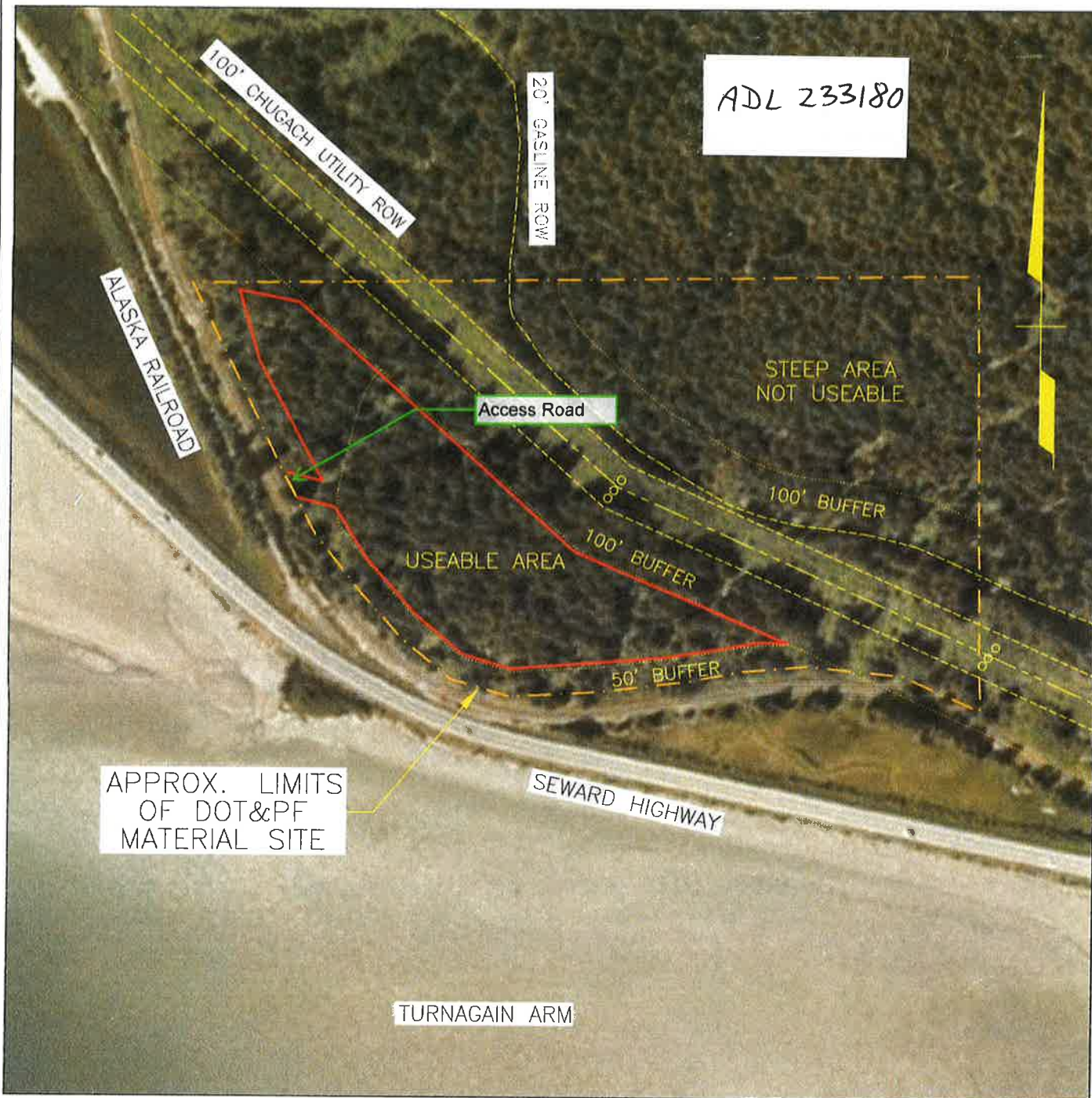


# SITE MAP



BASE MAP IS AUGUST 29, 2006 DIGITALGLOBE SATELLITE IMAGERY.  
THIS IS A PLANNING DOCUMENT ONLY. THE MATERIAL SITE BOUNDARIES SHOWN ON THIS  
DRAWING ARE APPROXIMATE. OWNERSHIP OF THE LANDS ADJACENT TO THIS SITE ARE  
UNKNOWN. THE ACCESS ROW SHOULD BE VERIFIED.

## ACTIVE - UNDEVELOPED



GRAPHIC SCALE IN FEET

BASE MAP FROM GOOGLE EARTH PRO 6/10/12

Prepared By:  
R&M CONSULTANTS, INC.

STATE OF ALASKA DEPARTMENT OF TRANSPORTATION AND PUBLIC FACILITIES			
STATEWIDE MATERIAL SITE INVENTORY			
MS 31-2-017-1			
SCALE AS SHOWN	DESIGNED P.K.H. CHECKED C.H.R.	DRAWN P.K.H. DATE MAY 2013	PAGE 3B

Z:\project\1443.03\31\_Seward Highway\MS 31-2-017-1-A\road\MS\_Site\_Map\_31-2-017-1.dwg

Plotted 6/6/2015 4:14 PM by Pete Hardcastle