

<b>ADDENDUM TO THE IFQ DOCUMENTS</b>	<b>Page Number</b> 1	<b>No. of Pages</b> 2
<b>Addendum No. One</b>	<b>Date Addendum Issued:</b> April 23, 2018	
<b>Issuing Office</b> Department of Natural Resources, Procurement 550 West 7 <sup>th</sup> Ave., Suite 1330, Anchorage, Alaska 99501 Phone: 269-8666 Fax: 269-8909	<b>Previous Addenda Issued</b>  None	
<b>Project:</b> Fahrenkamp Parking Lot <b>Project No.:</b> ASP 10-18-922 – Re-solicit	<b>Date and Hour of Quotes Due</b> April 30, 2018, 2:00 pm	

### **NOTICE TO BIDDERS**

**Bidder must acknowledge receipt of this addendum prior to the hour and date set for the quotes being due by one of the following methods:**

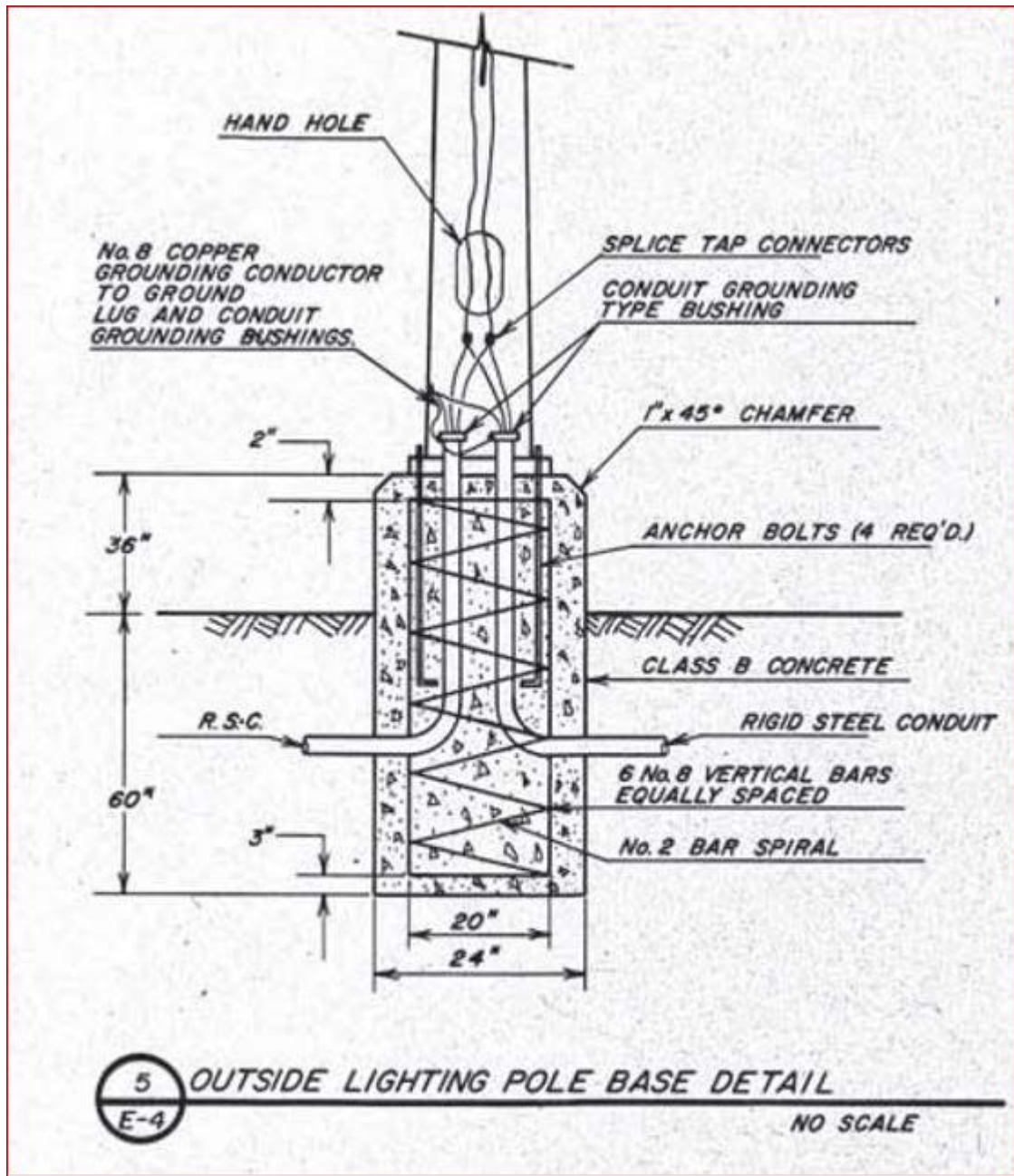
- (a) By acknowledging receipt of this addendum on the quote submitted.
- (b) By telegram or telefacsimile which includes a reference to the project and addendum number.

The bid documents require acknowledgment individually of all addenda to the drawings and/or specifications. This is a mandatory requirement and any quote received without acknowledgment of receipt of addenda may be classified as not being a responsive bid. If, by virtue of this addendum it is desired to modify a quote already submitted, such modification may be made by telegram or telefacsimile provided such a telegram or telefacsimile makes reference to this addendum and is received prior to the opening hour and date specified above.

\*\*\*\*\*

### **Questions / Answers:**

1. Drawing E2 shows the HBH conduits and parking lot lighting conduits as 2" conduit, this seems very excessive in size, would it be acceptable to utilize the standard 1" conduit as this is the typical conduit size for the HBH circuits and lighting circuits for most parking lots?
  - a. Using 1-1/4-inch conduit for the headbolt heater circuits is acceptable. Using 1-inch conduit for the lighting circuits is acceptable.
2. Drawing E1 detail 1 & 2 show a 7" diameter by 18-foot steel piling with a 18" diameter by 40" high concrete barrier for the parking lot lighting. This is not a typical installation for site/parking lot lighting. Typical installations for parking lot lighting/site lighting utilize a 24" sonotube filled with 4000psi concrete at a depth below finish grade of 6 feet with between 2 & 3 feet above finish grade. Please confirm this is a acceptable installation.?
  - a. No exception taken to matching existing design. Note 36-inch height above final grade with 1-inch 45 degree chamfer, 24-inch diameter, to 60 inches below grade, and reinforcement as shown below (detail from 1986 Denardo Center record drawing). Provide adjustment nuts on the anchor bolts to be able to align the pole and base cover to match the pole finish. (Excerpt on page 2 of this addendum)



Bidders are required to acknowledge this addendum on the proposal form or by FAX prior to the quotes being due.

\*\*\*\*\*

Addendum Number One (1) received.

\_\_\_\_\_  
Name/Title

\_\_\_\_\_  
Date

\_\_\_\_\_  
Firm

**END OF ADDENDUM**