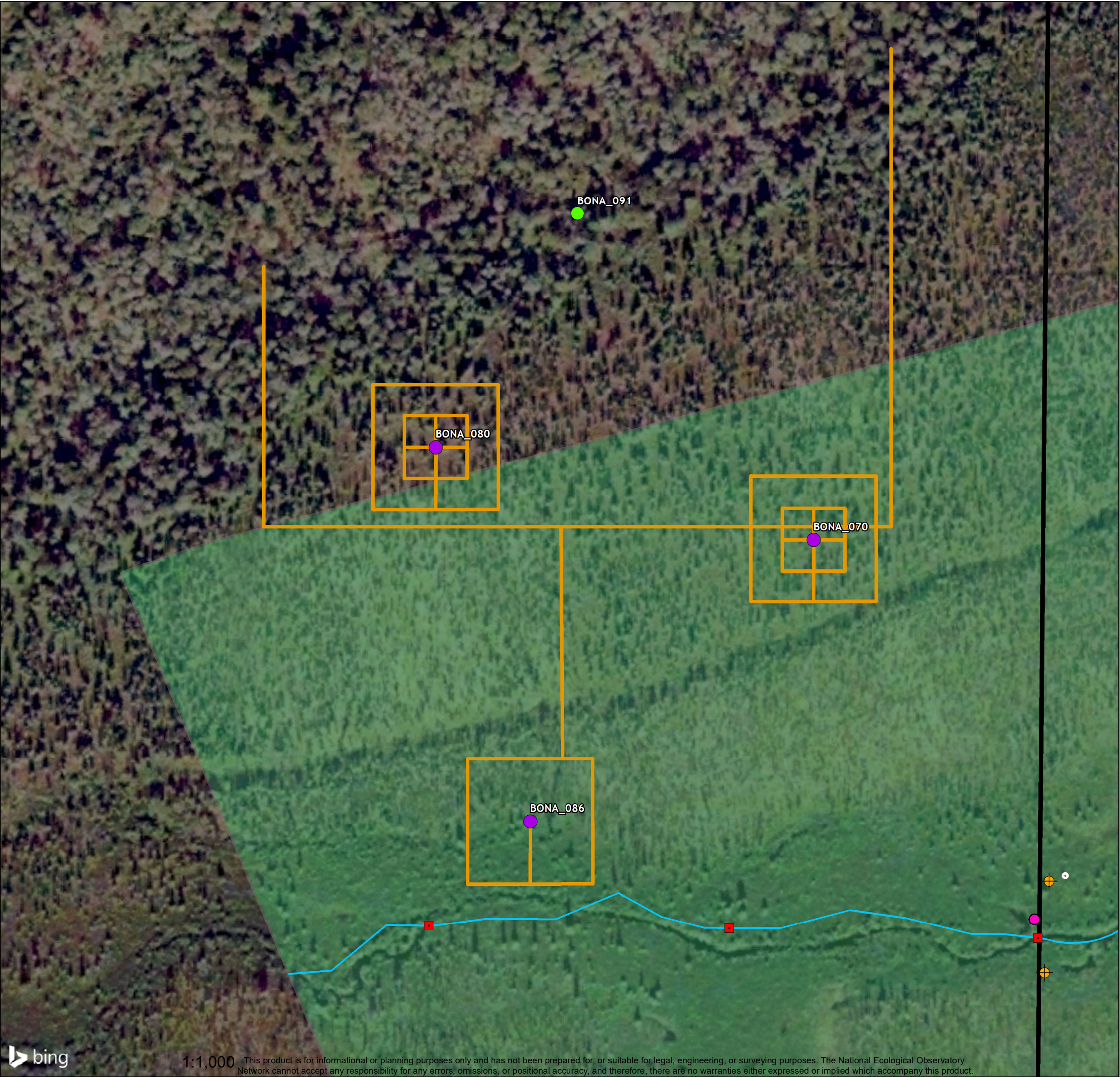


Service Layer Credits: Esri, DigitalGlobe, GeoEye, i-cubed, Earthstar Geographics, CNES/Airbus DS, USDA, AEX, Getmapping, Aerogrid, IGN, IGP, swisstopo, and the GIS User Community Copyright: 2014 Esri, DeLorme, HERE. Map produced by M. Slater



CARIBOU CREEK

DOMAIN 19
TAIGA
4N, 1E, S22



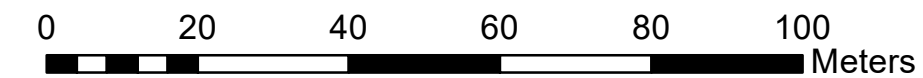
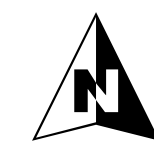
Legend

Terrestrial Sampling Centroid

- Base (purple dot)
- Phenology (green dot)

Aquatic Sampling

- Device Post (white circle with black outline)
- Sensor Set (pink dot)
- AQU Portal (yellow square with black outline)
- Camera (yellow circle with black outline)
- Groundwater Well (yellow circle with black outline and crosshair)
- Met Station (triangle with black outline)
- Stream Crossing (yellow circle with black outline and crosshair)
- Riparian Sampling (red square)
- Caribou Creek (blue line)
- Boardwalk (orange line)
- DNR State Land/UAF Boundary (black line)
- Aquatic Reach (light green shaded area)



WGS 1984 UTM Zone 6N
June 2017



NEON is sponsored by the National Science Foundation and operated under a cooperative agreement by Battelle