

ADL 232176

April 25, 2017

NOTES:

1. THE DISCHARGE LOCATION OF THE 6-INCH PIPE FROM SETTLING TANK C IS UNKNOWN. THIS LINE MUST BE FIELD LOCATED AND THEN CONNECTED TO THE PROPOSED 8-INCH HDPE OUTFALL LINE. USE AN ECCENTRIC 6" x 8" HDPE REDUCER FOR THE CONNECTION. PROVIDE PIPE ANCHORS AT 10-FOOT INTERVALS FOR ANY PORTION OF THE NEW OUTFALL LINE THAT IS BELOW 10 FT ELEVATION.
2. CONNECT TO PROPOSED 8-INCH OUTFALL LINE WITH A WYE FITTING. BUTT WELD ALL JOINTS.
3. CONNECT 8-INCH HDPE FLUSH PIPE TO PROPOSED 8-INCH HDPE OUTFALL WITH A WYE FITTING. THIS CONNECTION IS TO BE FIELD LOCATED IN THE SHORELINE EMBANKMENT.
4. CONNECT TO EXISTING 6-INCH HDPE OUTFALL PIPE WITH AN ECCENTRIC 6" x 8" HDPE REDUCER. USE REPAIR COUPLING PER DETAIL A1, SHEET C-505.
5. PROPOSED ISOLATION VALVE VAULTS TO BE INSTALLED AT LOCATION OF EXISTING UNUSED CHLORINATION VAULTS. SEE SHEET R-101 FOR EXISTING VAULT AS-BUILT DETAILS.



Division of Environmental
Health and Engineering
4500 Diplomacy Drive
Anchorage, Alaska 99508
(907) 729-9900



1" = 40'
BAR IS ONE INCH ON
ORIGINAL DRAWING. IF NOT
ADJUST SCALES ACCORDINGLY

AKHIOK, AK
OUTFALL IMPROVEMENTS
ISSUED FOR CONSTRUCTION

NO.	DESCRIPTION	DATE	BY

PLAN SET: AKK-15-008
PROJ MGR: MR
PROJ ENG: MS
DRUMS ENG: PC
DRAWN BY: ALH

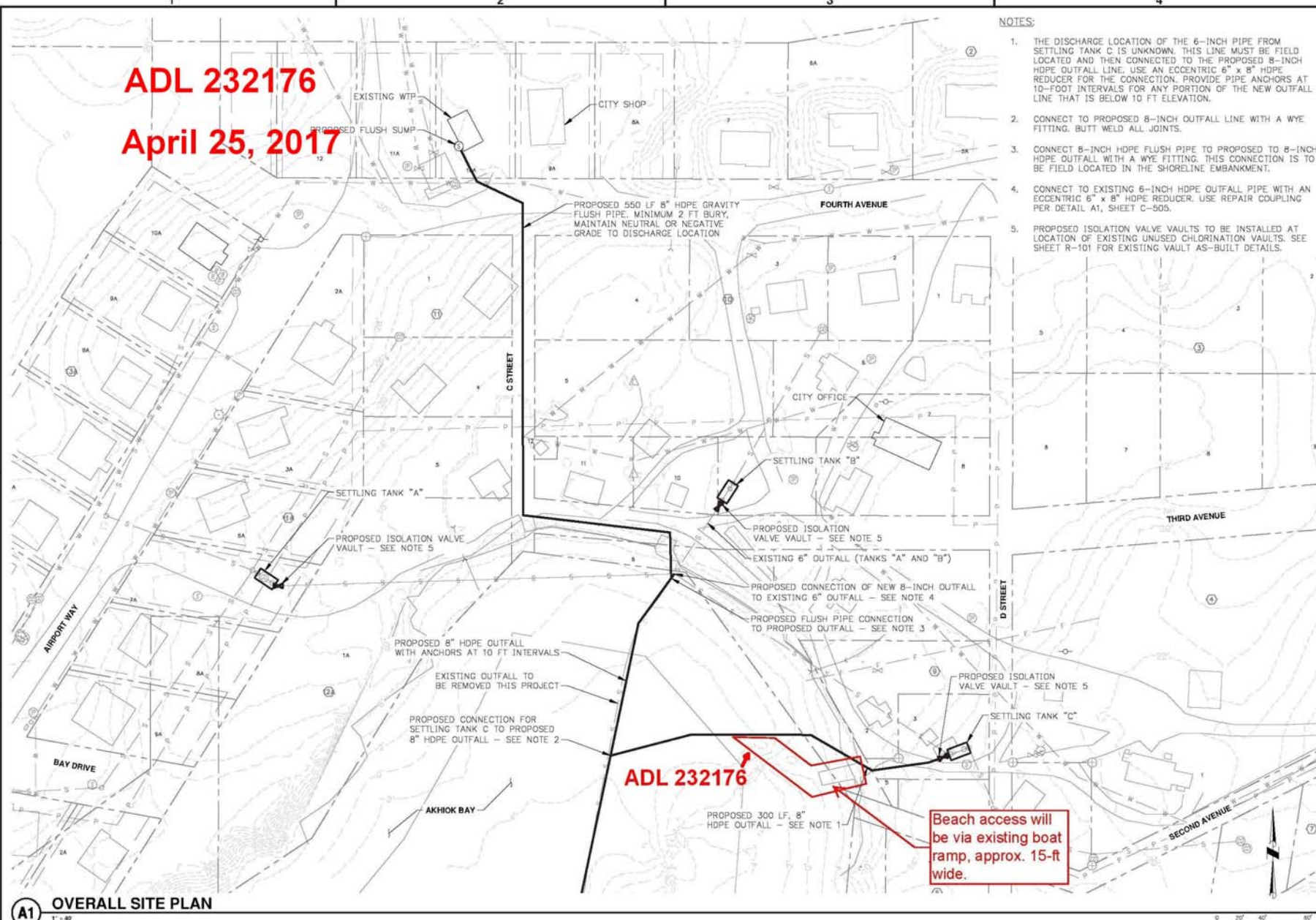
SHEET TITLE

OVERALL SITE PLAN

C-101

SHEET 2 OF 15

11 OF 38 TOTAL SHEETS



A1 OVERALL SITE PLAN